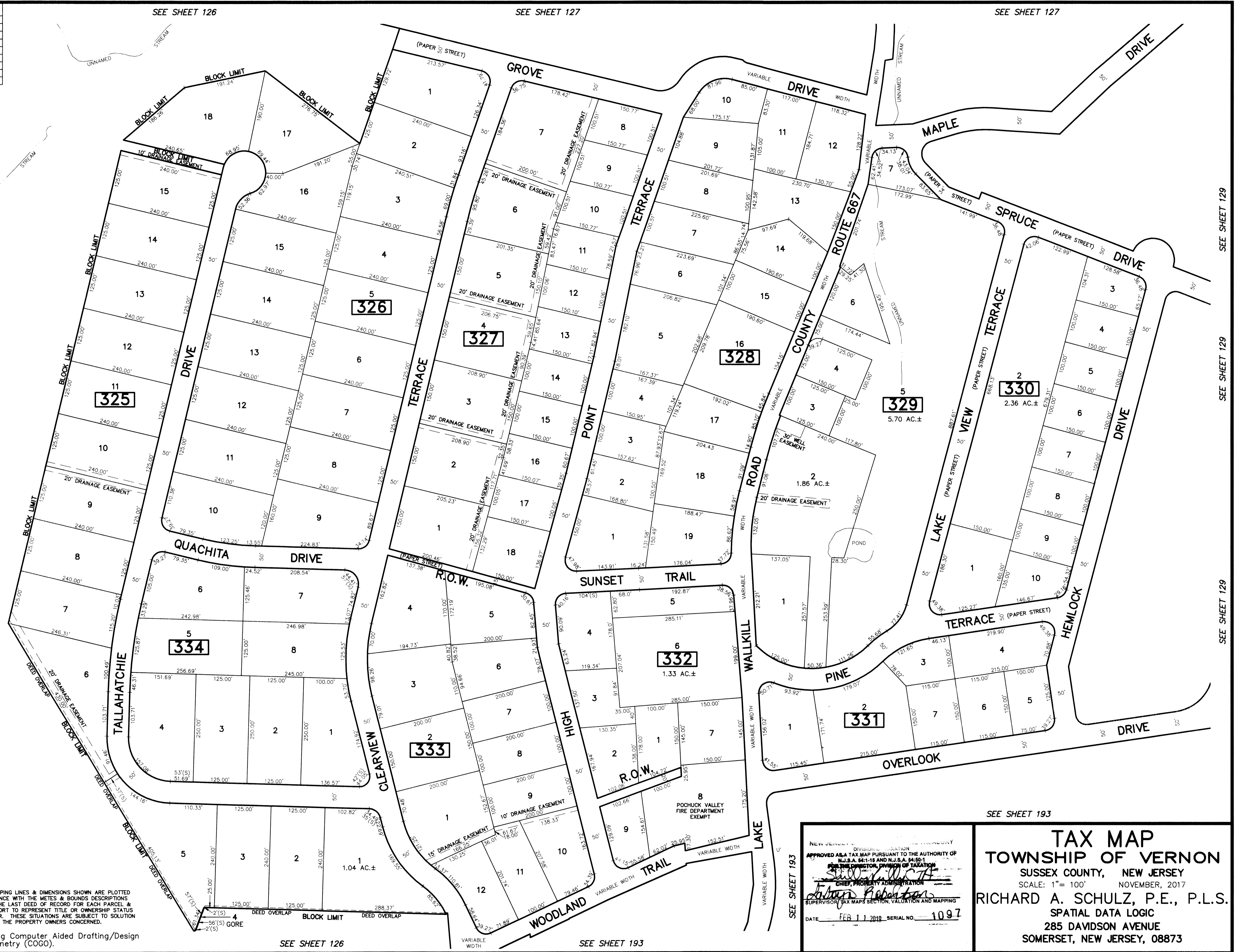


REVISIONS		
DATE	NAME	LIC. No.

SEE SHEET 126

SEE SHEET 126

SEE SHEET 126



SEE SHEET 129

SEE SHEET 129

SEE SHEET 129

DEED OVERLAP	
BLOCK	LOT
321	4
321	5
325	1
325	2
325	3
325	5
325	6
325	7

THE OVERLAPPING LINES & DIMENSIONS SHOWN ARE PLOTTED IN ACCORDANCE WITH THE METES & BOUNDS DESCRIPTIONS APPEARING THE LAST DEED OF RECORD FOR EACH PARCEL & DO NOT PURPORT TO REPRESENT TITLE OR OWNERSHIP STATUS IN ANY MANNER. THESE SITUATIONS ARE SUBJECT TO SOLUTION BY THE PROPERTY OWNERS CONCERNED.

This map has been drawn using Computer Aided Drafting/Design (CAD/D) and Coordinated Geometry (COGO).

SEE SHEET 126

SEE SHEET 126

NEW JERSEY DEPARTMENT OF TREASURY
 DIVISION OF TAXATION
 APPROVED AS A TAX MAP PURSUANT TO THE AUTHORITY OF
 N.J.S.A. 54:15 AND N.J.S.A. 54:5-1
 FOR THE DIRECTOR, DIVISION OF TAXATION
John P. Roberson
 CHIEF, PROPERTY ADMINISTRATION
 SUPERVISOR, TAX MAPS SECTION, VALUATION AND MAPPING
 DATE: FEB 11 2010 SERIAL NO. 1097

SEE SHEET 193

TAX MAP
TOWNSHIP OF VERNON
 SUSSEX COUNTY, NEW JERSEY
 SCALE: 1" = 100' NOVEMBER, 2017
RICHARD A. SCHULZ, P.E., P.L.S.
 SPATIAL DATA LOGIC
 285 DAVIDSON AVENUE
 SOMERSET, NEW JERSEY, 08873