

REVISIONS		
DATE	NAME	LIC. No.

SEE SHEET 100

SEE SHEET 101

SEE SHEET 102

SEE SHEET 102

SEE SHEET 105

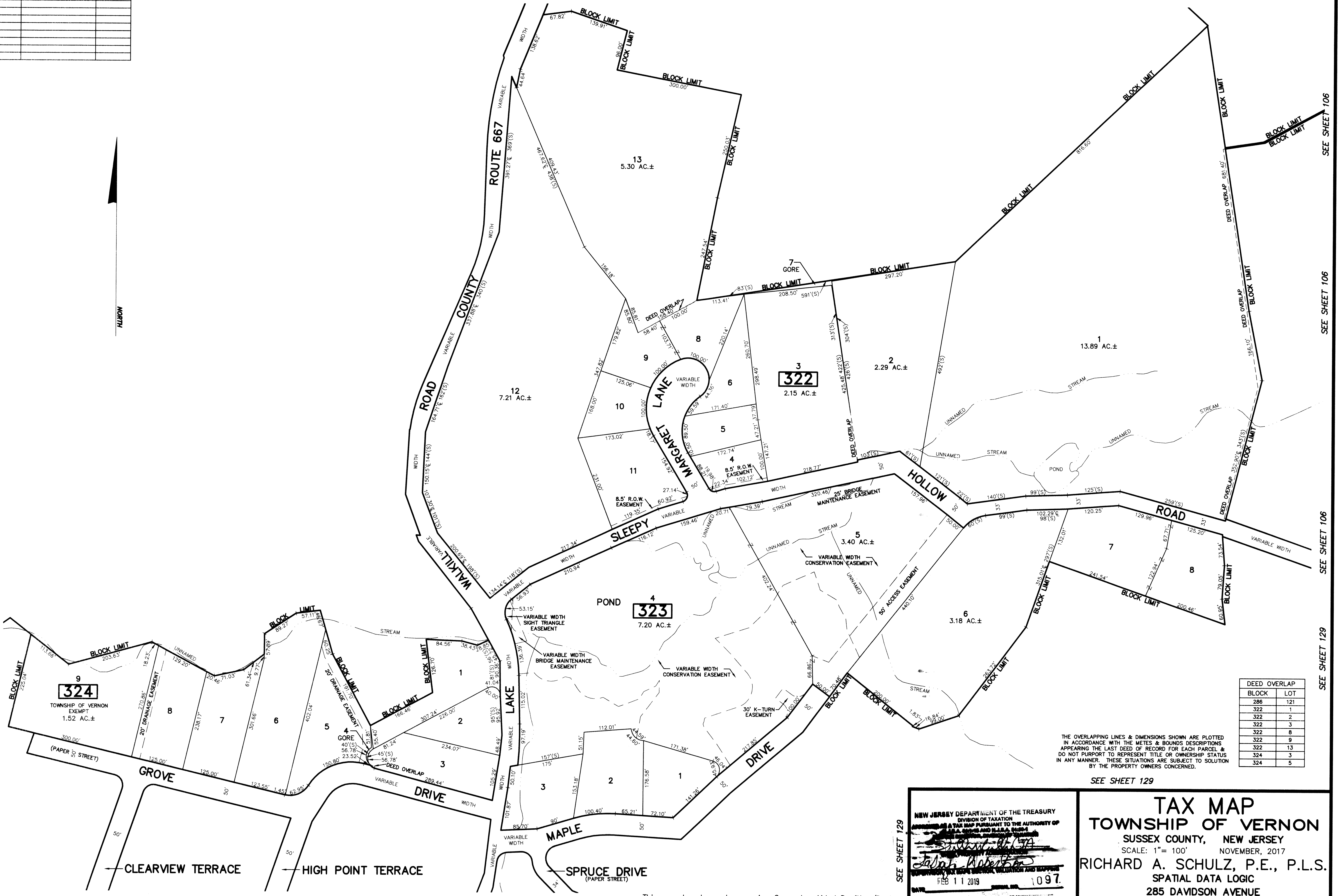
SEE SHEET 106

SEE SHEET 100

SEE SHEET 100

SEE SHEET 126

SEE SHEET 128



SEE SHEET 128

SEE SHEET 128

SEE SHEET 128

SEE SHEET 128

SEE SHEET 129

This map has been drawn using Computer Aided Drafting/Design (CAD/D) and Coordinated Geometry (COGO).

DEED OVERLAP	
BLOCK	LOT
286	121
322	1
322	2
322	3
322	8
322	9
322	13
324	3
324	5

THE OVERLAPPING LINES & DIMENSIONS SHOWN ARE PLOTTED IN ACCORDANCE WITH THE METES & BOUNDS DESCRIPTIONS APPEARING THE LAST DEED OF RECORD FOR EACH PARCEL & DO NOT PURPORT TO REPRESENT TITLE OR OWNERSHIP STATUS IN ANY MANNER. THESE SITUATIONS ARE SUBJECT TO SOLUTION BY THE PROPERTY OWNERS CONCERNED.

SEE SHEET 129

NEW JERSEY DEPARTMENT OF THE TREASURY
 DIVISION OF TAXATION
 APPROVED AS A TAX MAP PURSUANT TO THE AUTHORITY OF
 N.J.A.C. 17:27 AND N.J.A.C. 17:28
Richard A. Schulz
 Richard A. Schulz, P.E., P.L.S.
 FEB 11 2019 1097

TAX MAP
TOWNSHIP OF VERNON
 SUSSEX COUNTY, NEW JERSEY
 SCALE: 1" = 100' NOVEMBER, 2017
 RICHARD A. SCHULZ, P.E., P.L.S.
 SPATIAL DATA LOGIC
 285 DAVIDSON AVENUE
 SOMERSET, NEW JERSEY, 08873