

REVISIONS		
DATE	NAME	LIC. No.

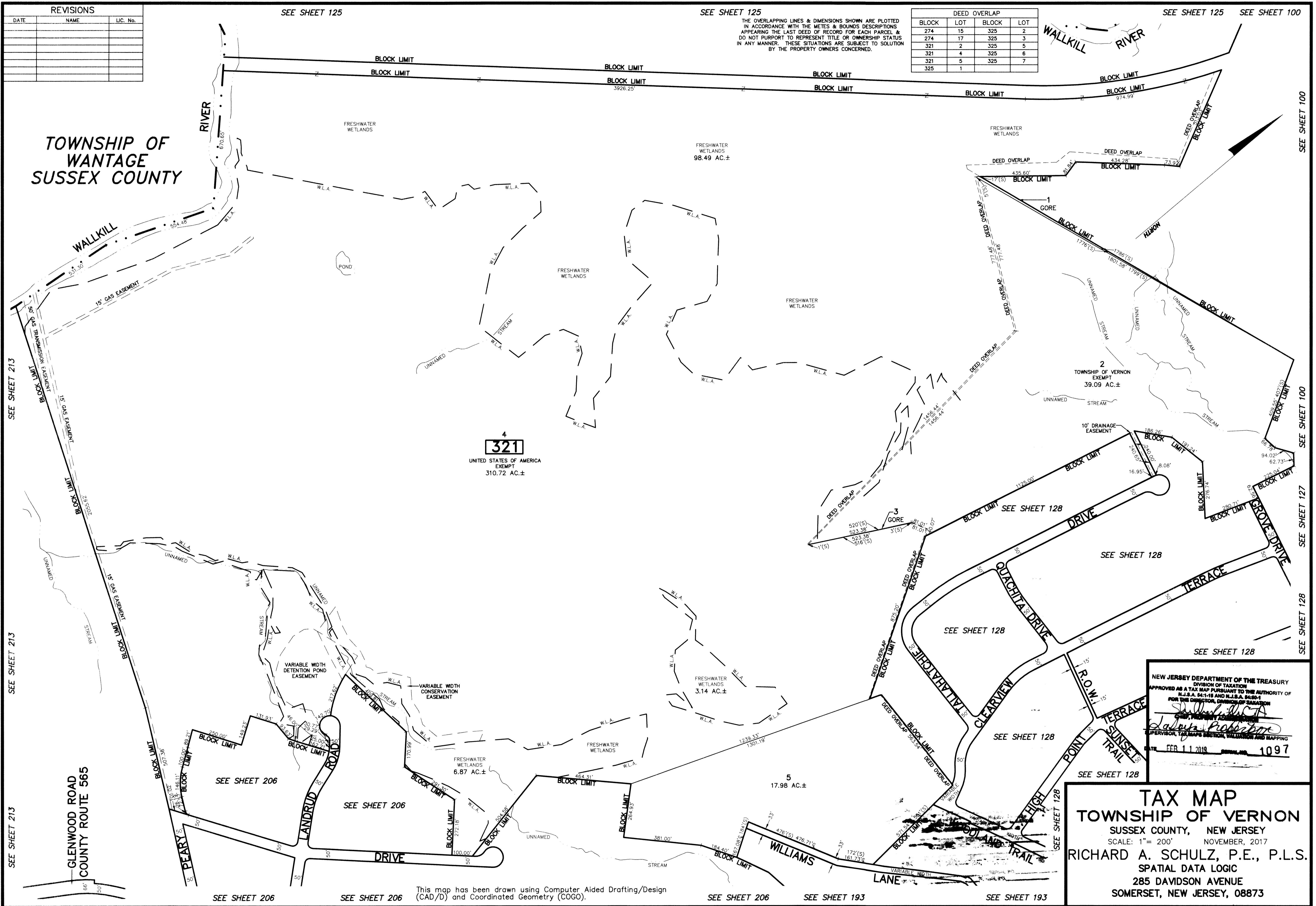
SEE SHEET 125

SEE SHEET 125

SEE SHEET 125 SEE SHEET 100

THE OVERLAPPING LINES & DIMENSIONS SHOWN ARE PLOTTED IN ACCORDANCE WITH THE METES & BOUNDS DESCRIPTIONS APPEARING THE LAST DEED OF RECORD FOR EACH PARCEL & DO NOT PURPORT TO REPRESENT TITLE OR OWNERSHIP STATUS IN ANY MANNER. THESE SITUATIONS ARE SUBJECT TO SOLUTION BY THE PROPERTY OWNERS CONCERNED.

DEED OVERLAP			
BLOCK	LOT	BLOCK	LOT
274	15	325	2
274	17	325	3
321	2	325	5
321	4	325	6
321	5	325	7
325	1	325	7



SEE SHEET 213  
SEE SHEET 213  
SEE SHEET 213  
SEE SHEET 213

SEE SHEET 100  
SEE SHEET 100  
SEE SHEET 127  
SEE SHEET 128

NEW JERSEY DEPARTMENT OF THE TREASURY  
DIVISION OF TAXATION  
APPROVED AS A TAX MAP PURSUANT TO THE AUTHORITY OF  
N.J.S.A. 54:16 AND N.J.S.A. 54:20-4  
FOR THE DIRECTOR, DIVISION OF TAXATION  
*Richard A. Schulz, P.E., P.L.S.*  
SUPERVISOR, TAX MAPS SECTION, VALUATION AND MAPPING  
DATE: FEB. 11, 2019 SERIAL NO. 1097

**TAX MAP**  
**TOWNSHIP OF VERNON**  
SUSSEX COUNTY, NEW JERSEY  
SCALE: 1" = 200' NOVEMBER, 2017  
**RICHARD A. SCHULZ, P.E., P.L.S.**  
SPATIAL DATA LOGIC  
285 DAVIDSON AVENUE  
SOMERSET, NEW JERSEY, 08873

This map has been drawn using Computer Aided Drafting/Design (CAD/D) and Coordinated Geometry (COGO).

SEE SHEET 206

SEE SHEET 206

SEE SHEET 206

SEE SHEET 193

SEE SHEET 193