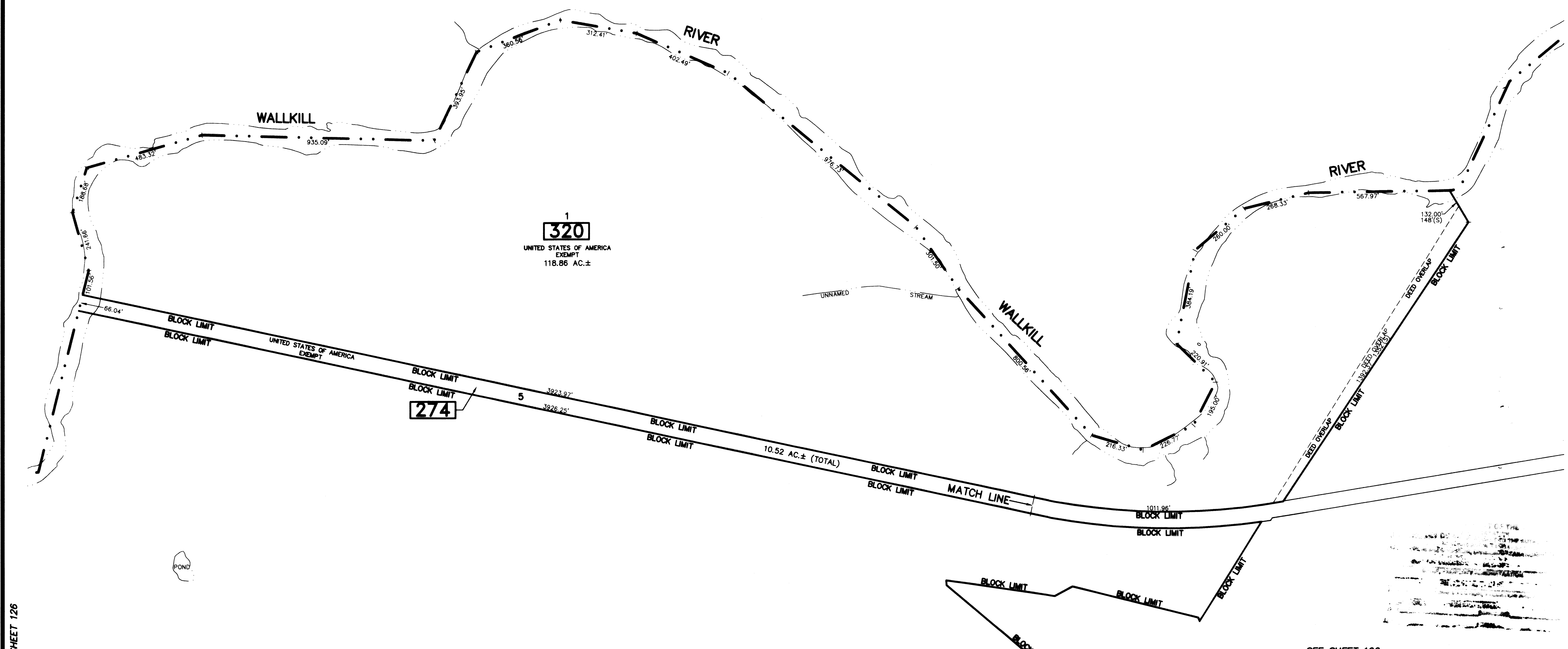
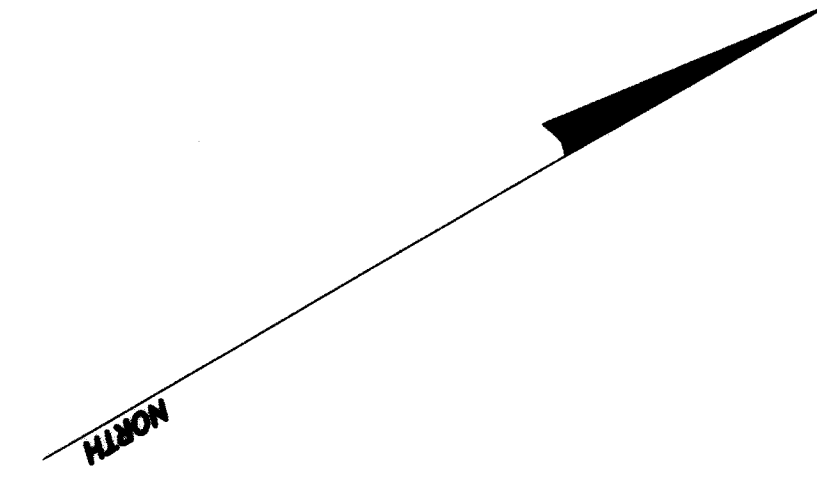


REVISIONS		
DATE	NAME	LIC. No.

TOWNSHIP OF
WANTAGE
SUSSEX COUNTY



SEE SHEET 126

SEE SHEET 100

SEE SHEET 100

SEE SHEET 126

SEE SHEET 126

DEED OVERLAP	BLOCK	LOT
	274	2
	320	1

THE OVERLAPPING LINES & DIMENSIONS SHOWN ARE PLOTTED IN ACCORDANCE WITH THE METES & BOUNDS DESCRIPTIONS APPEARING THE LAST DEED OF RECORD FOR EACH PARCEL & DO NOT PURPORT TO REPRESENT TITLE OR OWNERSHIP STATUS IN ANY MANNER. THESE SITUATIONS ARE SUBJECT TO SOLUTION BY THE PROPERTY OWNERS CONCERNED.

This map has been drawn using Computer Aided Drafting/Design (CAD/D) and Coordinated Geometry (COGO).

NEW JERSEY DEPARTMENT OF THE TREASURY
DIVISION OF TAXATION
APPROVED AS A TAX MAP PURSUANT TO THE AUTHORITY OF
N.J.S.A. 55:15 AND N.J.S.A. 54:50-1
FOR THE DIVISION, DIVISION OF TAXATION
Richard A. Schulz
CHIEF, PROPERTY ADMINISTRATION
DATE FEB 11 2019 SERIAL NO. 1097

TAX MAP
TOWNSHIP OF VERNON
SUSSEX COUNTY, NEW JERSEY
SCALE: 1" = 200' NOVEMBER, 2017
RICHARD A. SCHULZ, P.E., P.L.S.
SPATIAL DATA LOGIC
285 DAVIDSON AVENUE
SOMERSET, NEW JERSEY, 08873