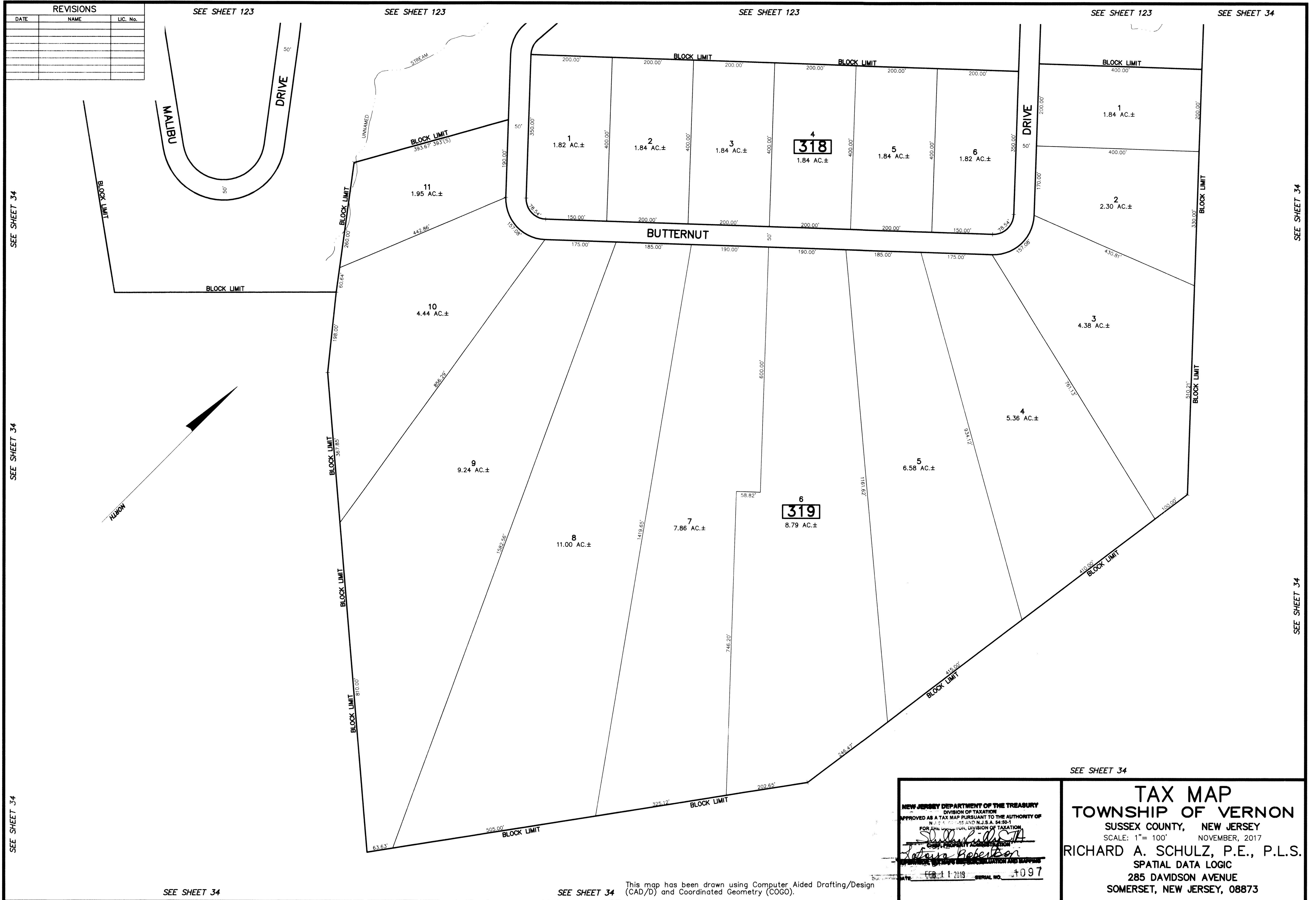


REVISIONS		
DATE	NAME	LIC. No.



SEE SHEET 34

SEE SHEET 34

This map has been drawn using Computer Aided Drafting/Design (CAD/D) and Coordinated Geometry (COGO).

NEW JERSEY DEPARTMENT OF THE TREASURY
 DIVISION OF TAXATION
 APPROVED AS A TAX MAP PURSUANT TO THE AUTHORITY OF
 N.J.S.A. 17:27 AND N.J.S.A. 17:28
 FOR THE TOWNSHIP, DIVISION OF TAXATION
Susan P. Costa
 CHIEF PROPERTY ADMINISTRATOR
Jatrina Robertson
 DATE: FEB 11 2019 SERIAL NO. 1097

SEE SHEET 34

TAX MAP
TOWNSHIP OF VERNON
 SUSSEX COUNTY, NEW JERSEY
 SCALE: 1" = 100' NOVEMBER, 2017
RICHARD A. SCHULZ, P.E., P.L.S.
 SPATIAL DATA LOGIC
 285 DAVIDSON AVENUE
 SOMERSET, NEW JERSEY, 08873