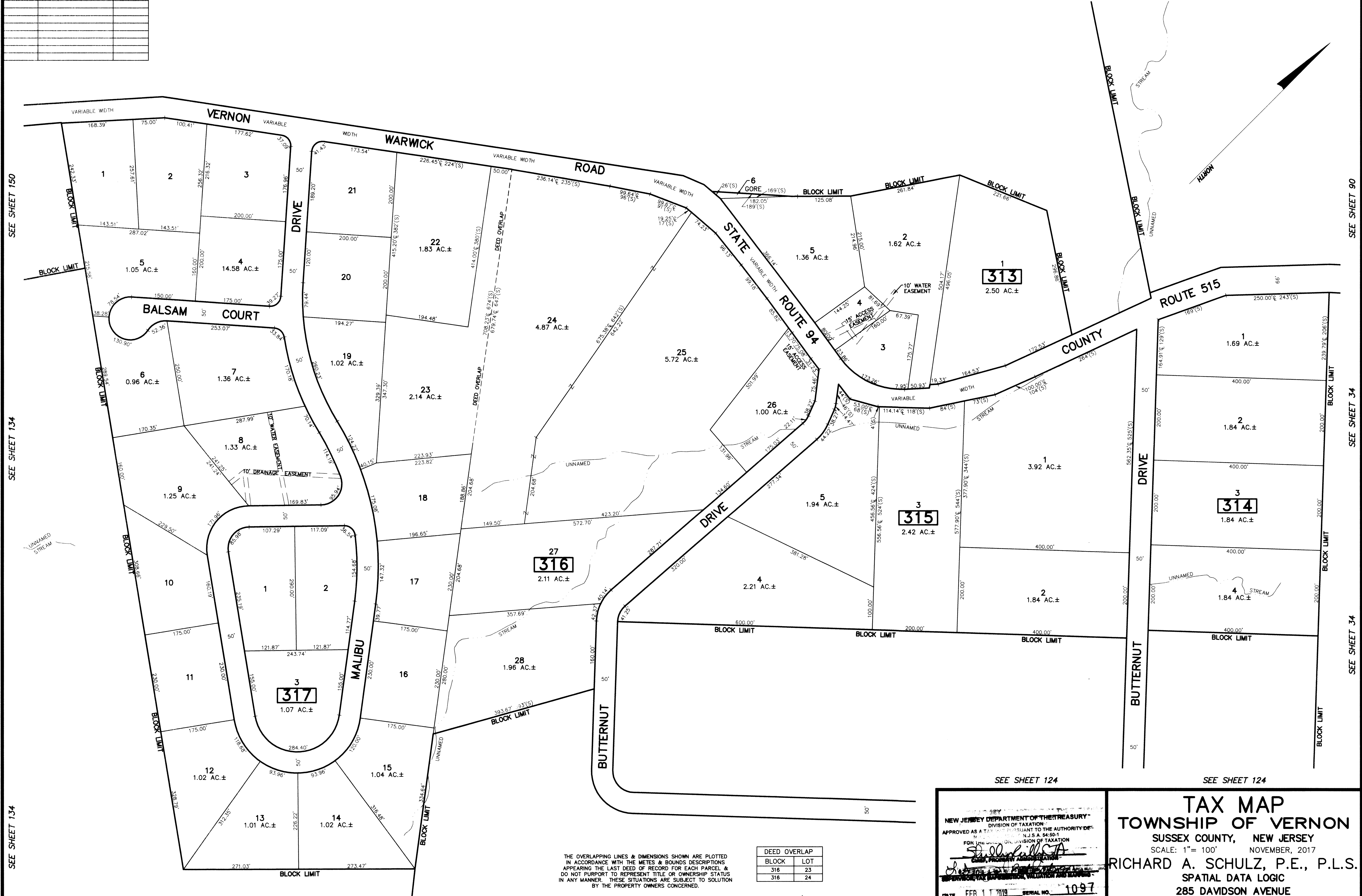


REVISIONS		
DATE	NAME	LIC. No.

SEE SHEET 122

SEE SHEET 122

SEE SHEET 90



SEE SHEET 150

SEE SHEET 134

SEE SHEET 134

SEE SHEET 90

SEE SHEET 34

SEE SHEET 34

SEE SHEET 134

SEE SHEET 124

SEE SHEET 124

SEE SHEET 124

SEE SHEET 124

THE OVERLAPPING LINES & DIMENSIONS SHOWN ARE PLOTTED IN ACCORDANCE WITH THE METES & BOUNDS DESCRIPTIONS APPEARING THE LAST DEED OF RECORD FOR EACH PARCEL & DO NOT PURPORT TO REPRESENT TITLE OR OWNERSHIP STATUS IN ANY MANNER. THESE SITUATIONS ARE SUBJECT TO SOLUTION BY THE PROPERTY OWNERS CONCERNED.

DEED OVERLAP	
BLOCK	LOT
316	23
316	24

This map has been drawn using Computer Aided Drafting/Design (CAD/D) and Coordinated Geometry (COGO).

NEW JERSEY DEPARTMENT OF THE TREASURY  
 DIVISION OF TAXATION  
 APPROVED AS A TAX MAP PURSUANT TO THE AUTHORITY OF N.J.S.A. 54:5B-1 FOR THE DIVISION OF TAXATION  
 COUNTY, PROGRAM ADMINISTRATOR  
 DATE FEB 11 2019 SERIAL NO. 1097

**TAX MAP**  
**TOWNSHIP OF VERNON**  
 SUSSEX COUNTY, NEW JERSEY  
 SCALE: 1"= 100' NOVEMBER, 2017  
 RICHARD A. SCHULZ, P.E., P.L.S.  
 SPATIAL DATA LOGIC  
 285 DAVIDSON AVENUE  
 SOMERSET, NEW JERSEY, 08873