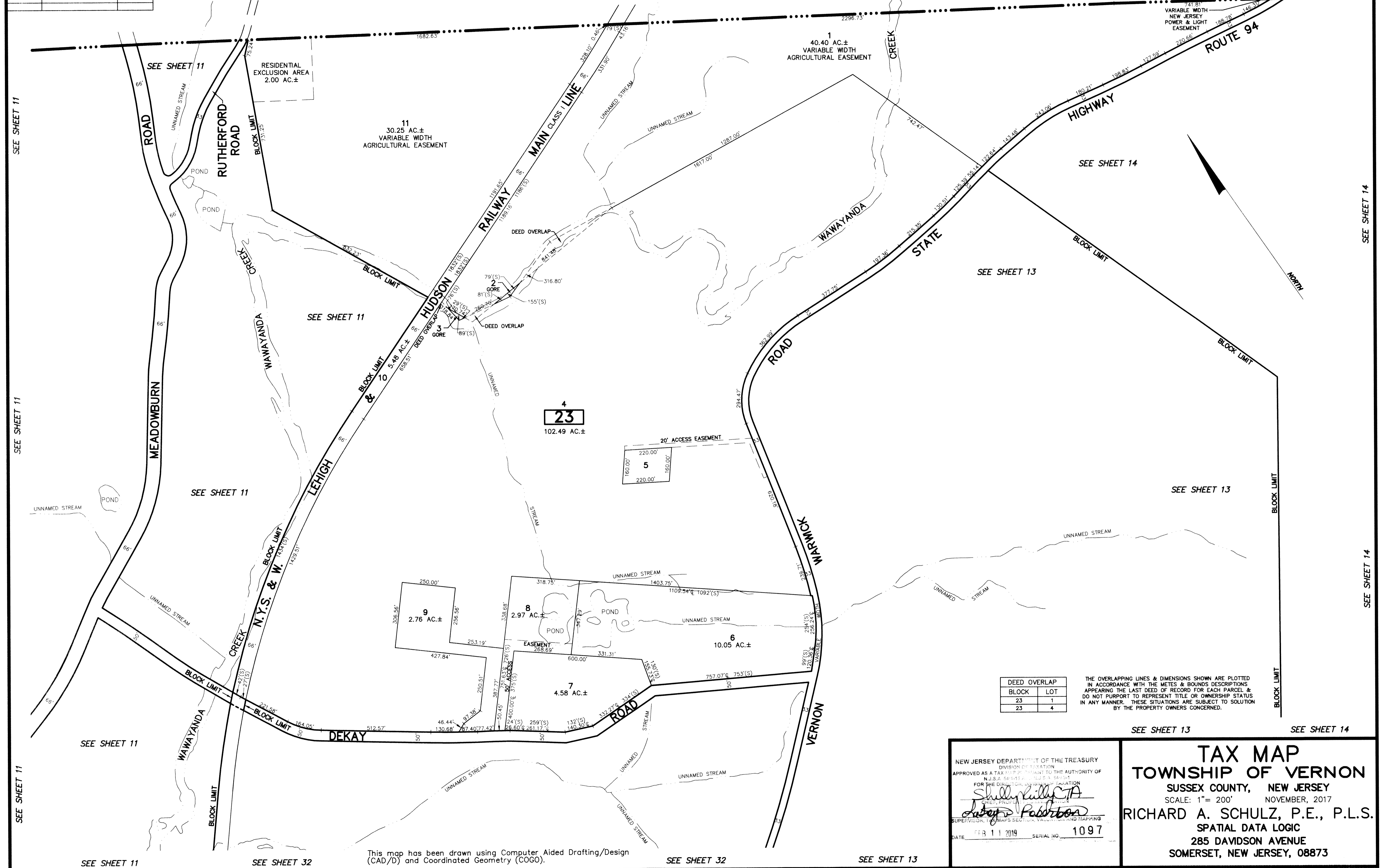


REVISIONS		
DATE	NAME	LIC. No.

STATE OF NEW YORK  
ORANGE COUNTY  
TOWNSHIP OF WARWICK



DEED OVERLAP	
BLOCK	LOT
23	1
23	4

THE OVERLAPPING LINES & DIMENSIONS SHOWN ARE PLOTTED IN ACCORDANCE WITH THE METES & BOUNDS DESCRIPTIONS APPEARING THE LAST DEED OF RECORD FOR EACH PARCEL & DO NOT PURPORT TO REPRESENT TITLE OR OWNERSHIP STATUS IN ANY MANNER. THESE SITUATIONS ARE SUBJECT TO SOLUTION BY THE PROPERTY OWNERS CONCERNED.

NEW JERSEY DEPARTMENT OF THE TREASURY  
DIVISION OF TAXATION  
APPROVED AS A TAX MAP PURSUANT TO THE AUTHORITY OF  
N.J.S.A. 17:27 AND N.J.S.A. 17:28  
FOR THE DIVISION OF TAXATION  
*Shelly Kelly, CTA*  
CHIEF, PROPERTY TAX SERVICES  
*Robert P. ...*  
SUPERVISOR, TAX MAPS SECTION, VALUATION AND MAPPING  
DATE: FEB 11 2019 SERIAL NO. 1097

**TAX MAP**  
**TOWNSHIP OF VERNON**  
SUSSEX COUNTY, NEW JERSEY  
SCALE: 1" = 200' NOVEMBER, 2017  
**RICHARD A. SCHULZ, P.E., P.L.S.**  
SPATIAL DATA LOGIC  
285 DAVIDSON AVENUE  
SOMERSET, NEW JERSEY, 08873

This map has been drawn using Computer Aided Drafting/Design (CAD/D) and Coordinated Geometry (COGO).

SEE SHEET 11

SEE SHEET 14

SEE SHEET 11

SEE SHEET 32

SEE SHEET 32

SEE SHEET 13

SEE SHEET 14