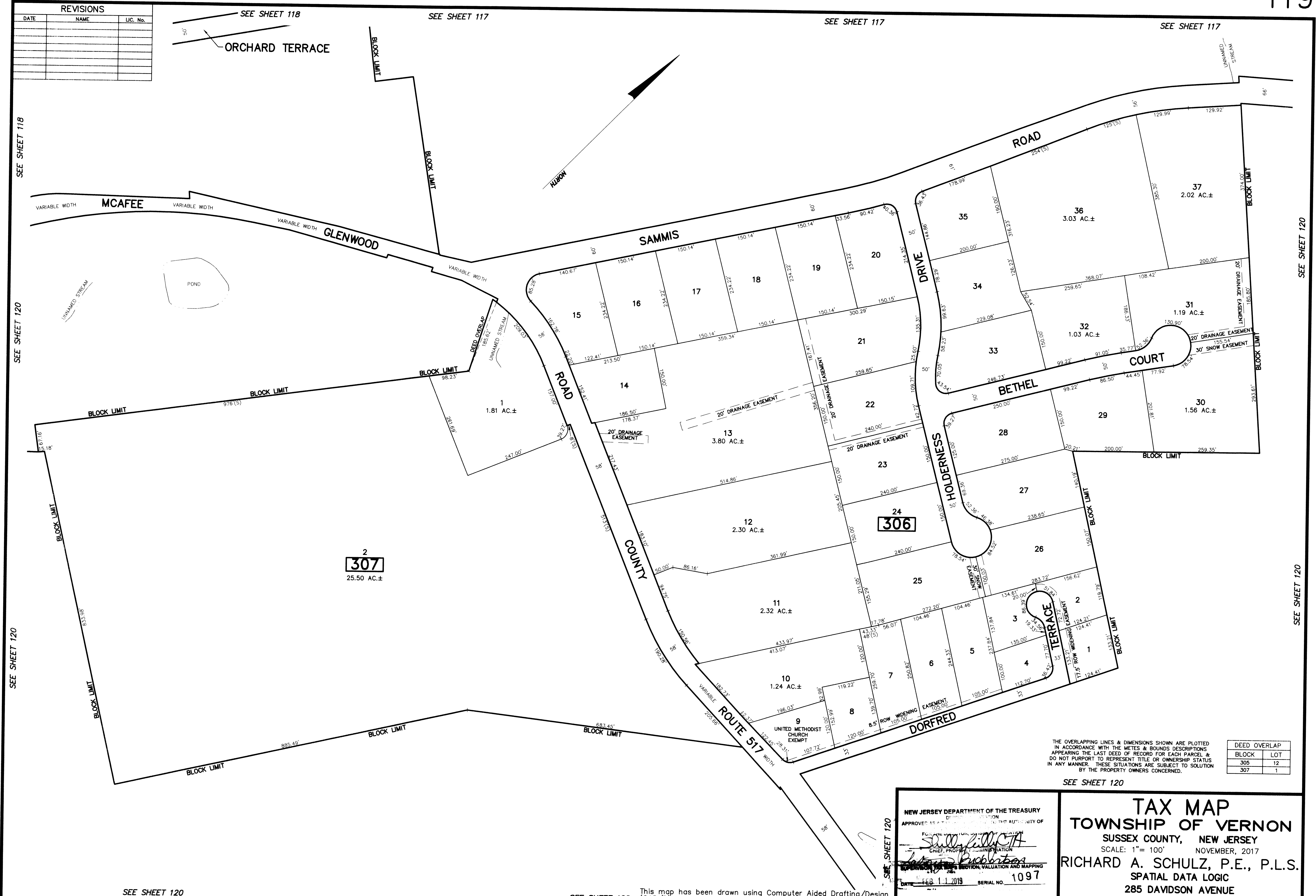


REVISIONS		
DATE	NAME	LIC. No.



SEE SHEET 118
SEE SHEET 117
SEE SHEET 117
SEE SHEET 117

ORCHARD TERRACE

MCAFFEE

GLENWOOD

SAMMIS

ROAD

ROAD

COURT

BETHEL

HOLDERNESS

306

COUNTY

ROUTE 517

DORFRED

THE OVERLAPPING LINES & DIMENSIONS SHOWN ARE PLOTTED IN ACCORDANCE WITH THE METES & BOUNDS DESCRIPTIONS APPEARING THE LAST DEED OF RECORD FOR EACH PARCEL & DO NOT PURPORT TO REPRESENT TITLE OR OWNERSHIP STATUS IN ANY MANNER. THESE SITUATIONS ARE SUBJECT TO SOLUTION BY THE PROPERTY OWNERS CONCERNED.

DEED OVERLAP	
BLOCK	LOT
305	12
307	1

SEE SHEET 120

NEW JERSEY DEPARTMENT OF THE TREASURY
APPROVED AS A TAX MAP FOR THE TOWNSHIP OF VERNON
FOR THE TOWNSHIP OF VERNON, NEW JERSEY
CHIEF, PROPERTY ADMINISTRATION
SUPERVISOR, TAXES SECTION, VALUATION AND MAPPING
DATE: FEB 11 2019 SERIAL NO. 1097

TAX MAP
TOWNSHIP OF VERNON
SUSSEX COUNTY, NEW JERSEY
SCALE: 1" = 100' NOVEMBER, 2017
RICHARD A. SCHULZ, P.E., P.L.S.
SPATIAL DATA LOGIC
285 DAVIDSON AVENUE
SOMERSET, NEW JERSEY, 08873

SEE SHEET 120
SEE SHEET 120
This map has been drawn using Computer Aided Drafting/Design (CAD/D) and Coordinated Geometry (COGO).