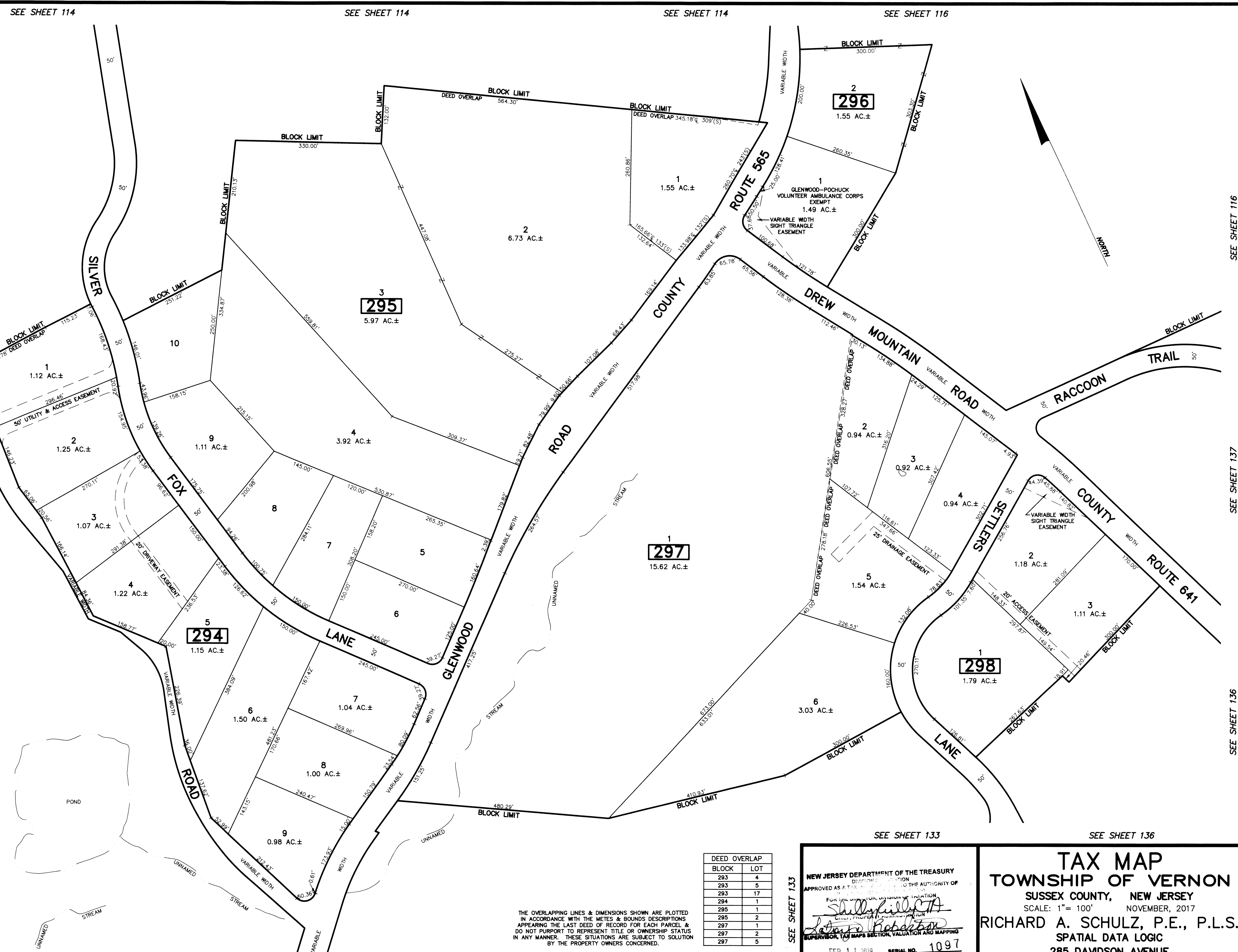


REVISIONS		
DATE	NAME	LIC. No.



SEE SHEET 114
SEE SHEET 113
SEE SHEET 132
SEE SHEET 132

SEE SHEET 114

SEE SHEET 114

SEE SHEET 114

SEE SHEET 116

SEE SHEET 116
SEE SHEET 137
SEE SHEET 136

SEE SHEET 132

SEE SHEET 133

SEE SHEET 133

SEE SHEET 136

THE OVERLAPPING LINES & DIMENSIONS SHOWN ARE PLOTTED IN ACCORDANCE WITH THE METES & BOUNDS DESCRIPTIONS APPEARING IN THE LAST DEED OF RECORD FOR EACH PARCEL & DO NOT PURPORT TO REPRESENT TITLE OR OWNERSHIP STATUS IN ANY MANNER. THESE SITUATIONS ARE SUBJECT TO SOLUTION BY THE PROPERTY OWNERS CONCERNED.

This map has been drawn using Computer Aided Drafting/Design (CAD/D) and Coordinated Geometry (COGO).

DEED OVERLAP	BLOCK	LOT
	293	4
	293	5
	293	17
	294	1
	295	1
	295	2
	297	1
	297	2
	297	5

NEW JERSEY DEPARTMENT OF THE TREASURY
DIVISION OF TAXATION
APPROVED AS A TAX MAP BY THE AUTHORITY OF
FOR THE COUNTY OF SUSSEX
Shelly Kelly, CTA
James Roberson
SUPERVISOR, TAX MAPS SECTION, VALUATION AND MAPPING
DATE FEB 11 2018 SERIAL NO. 1097

TAX MAP
TOWNSHIP OF VERNON
SUSSEX COUNTY, NEW JERSEY
SCALE: 1" = 100' NOVEMBER, 2017
RICHARD A. SCHULZ, P.E., P.L.S.
SPATIAL DATA LOGIC
285 DAVIDSON AVENUE
SOMERSET, NEW JERSEY, 08873