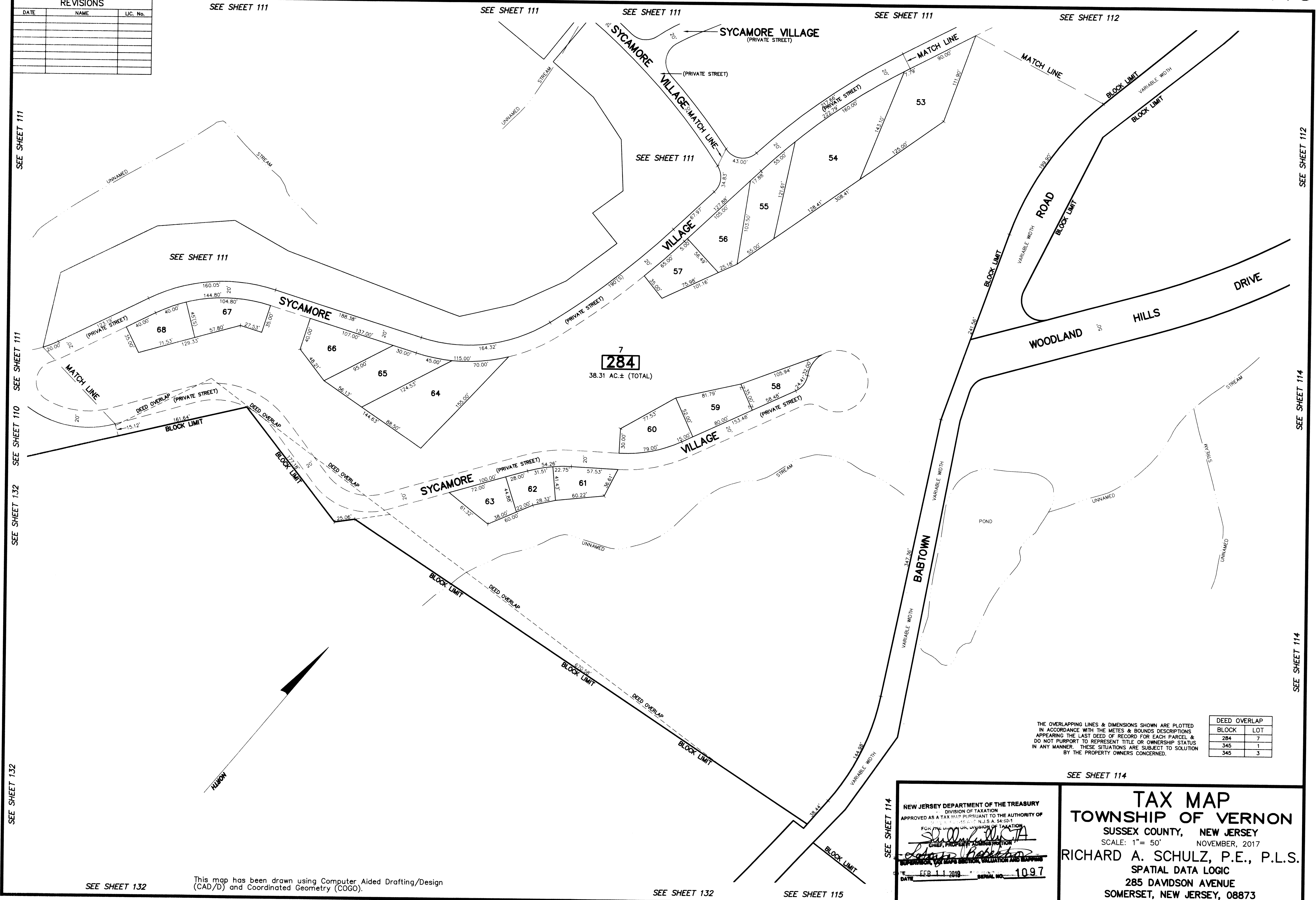


REVISIONS		
DATE	NAME	LIC. No.



THE OVERLAPPING LINES & DIMENSIONS SHOWN ARE PLOTTED IN ACCORDANCE WITH THE METES & BOUNDS DESCRIPTIONS APPEARING IN THE LAST DEED OF RECORD FOR EACH PARCEL & DO NOT PURPORT TO REPRESENT TITLE OR OWNERSHIP STATUS IN ANY MANNER. THESE SITUATIONS ARE SUBJECT TO SOLUTION BY THE PROPERTY OWNERS CONCERNED.

DEED OVERLAP	
BLOCK	LOT
284	7
345	1
345	3

NEW JERSEY DEPARTMENT OF THE TREASURY  
 DIVISION OF TAXATION  
 APPROVED AS A TAX MAP PURSUANT TO THE AUTHORITY OF  
 P.L. 2007-10, N.J.S.A. 54:50-1  
 FOR THE COUNTY CLERK, TOWNSHIP OF VERNON, NEW JERSEY  
*[Signature]*  
 CHIEF, PROPERTY ADMINISTRATION  
 SUPERVISOR, TAX MAPS SECTION, VALUATION AND MAPS  
 DATE FEB 11 2010 SERIAL NO. 1097

SEE SHEET 114

**TAX MAP**  
**TOWNSHIP OF VERNON**  
 SUSSEX COUNTY, NEW JERSEY  
 SCALE: 1" = 50' NOVEMBER, 2017  
 RICHARD A. SCHULZ, P.E., P.L.S.  
 SPATIAL DATA LOGIC  
 285 DAVIDSON AVENUE  
 SOMERSET, NEW JERSEY, 08873

This map has been drawn using Computer Aided Drafting/Design (CAD/D) and Coordinated Geometry (COGO).

SEE SHEET 111  
 SEE SHEET 110  
 SEE SHEET 132  
 SEE SHEET 132

SEE SHEET 112  
 SEE SHEET 114  
 SEE SHEET 114

SEE SHEET 132  
 SEE SHEET 115

SEE SHEET 132