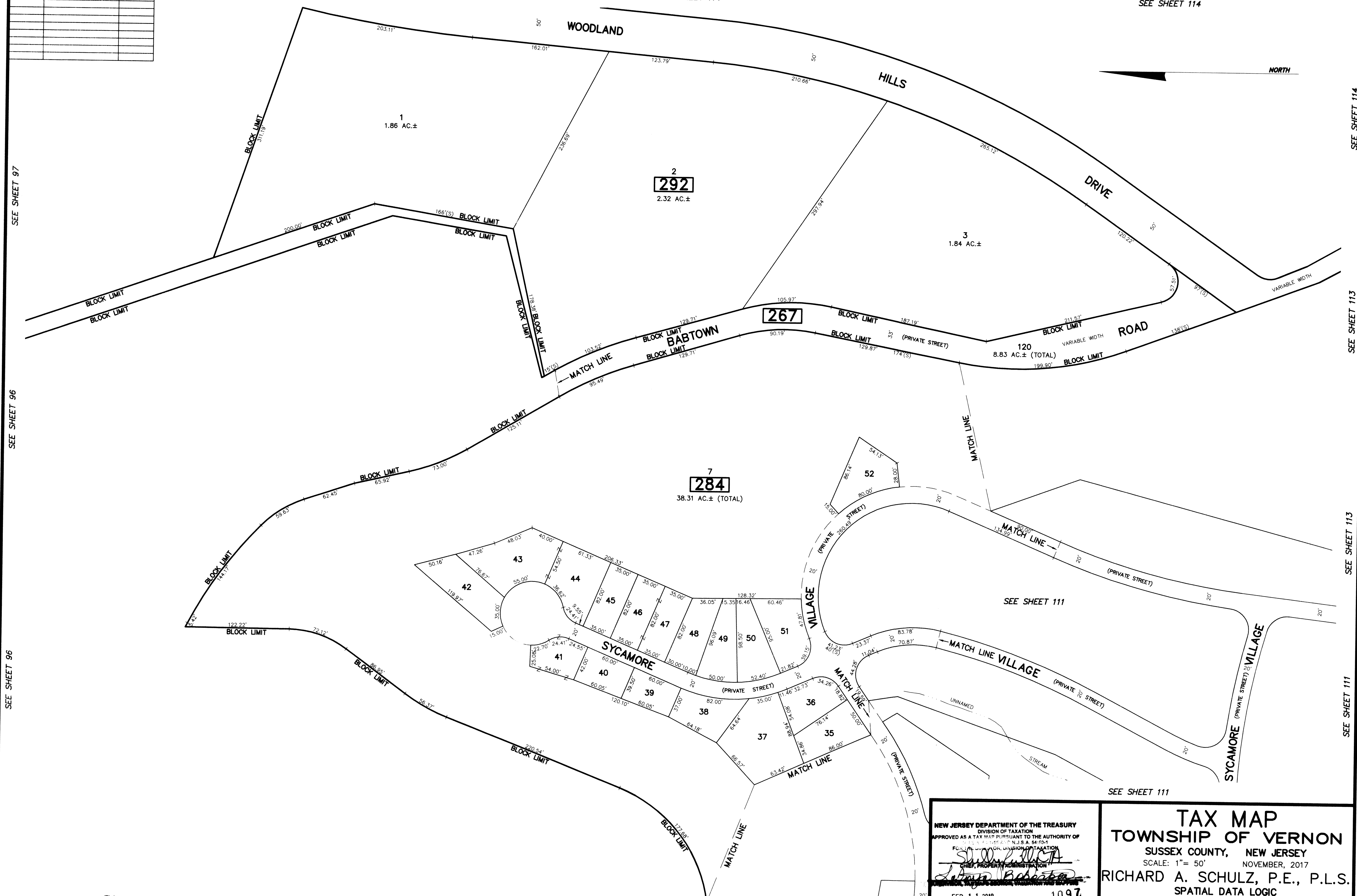


REVISIONS		
DATE	NAME	LIC. No.

SEE SHEET 97

SEE SHEET 114

SEE SHEET 114



SEE SHEET 97

SEE SHEET 96

SEE SHEET 96

SEE SHEET 114

SEE SHEET 113

SEE SHEET 113

SEE SHEET 111

SEE SHEET 96 This map has been drawn using Computer Aided Drafting/Design (CAD/D) and Coordinated Geometry (COGO).

SEE SHEET 96

SEE SHEET 111

NEW JERSEY DEPARTMENT OF THE TREASURY
 DIVISION OF TAXATION
 APPROVED AS A TAX MAP PURSUANT TO THE AUTHORITY OF
 REG. STAT. TITLE 17B, N.J.S.A. 54-20.1
[Signature]
 CHIEF, PROPERTY ADMINISTRATION
 DATE: FEB 11 2019 SERIAL NO. 1097

TAX MAP
TOWNSHIP OF VERNON
 SUSSEX COUNTY, NEW JERSEY
 SCALE: 1" = 50' NOVEMBER, 2017
 RICHARD A. SCHULZ, P.E., P.L.S.
 SPATIAL DATA LOGIC
 285 DAVIDSON AVENUE
 SOMERSET, NEW JERSEY, 08873