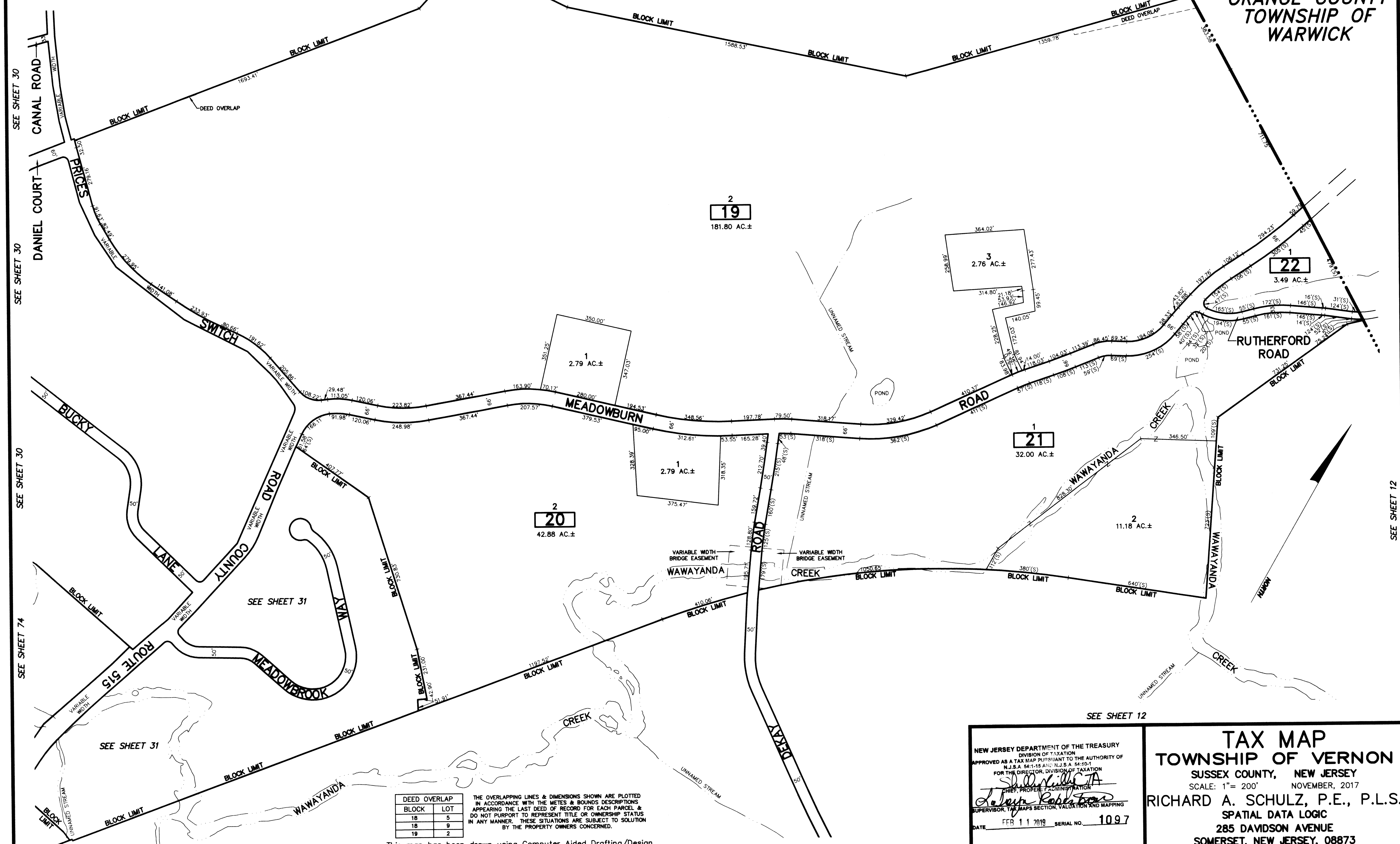


STATE OF
NEW YORK
ORANGE COUNTY
TOWNSHIP OF
WARWICK

REVISIONS		
DATE	NAME	LIC. No.

SEE SHEET 10

SEE SHEET 10



SEE SHEET 30
SEE SHEET 30
SEE SHEET 30
SEE SHEET 74
SEE SHEET 31
SEE SHEET 31
SEE SHEET 32

SEE SHEET 12

SEE SHEET 12

DEED OVERLAP	
BLOCK	LOT
18	5
18	9
19	2

THE OVERLAPPING LINES & DIMENSIONS SHOWN ARE PLOTTED IN ACCORDANCE WITH THE METES & BOUNDS DESCRIPTIONS APPEARING THE LAST DEED OF RECORD FOR EACH PARCEL & DO NOT PURPORT TO REPRESENT TITLE OR OWNERSHIP STATUS IN ANY MANNER. THESE SITUATIONS ARE SUBJECT TO SOLUTION BY THE PROPERTY OWNERS CONCERNED.

This map has been drawn using Computer Aided Drafting/Design (CAD/D) and Coordinated Geometry (COGO).

SEE SHEET 32
SEE SHEET 12

NEW JERSEY DEPARTMENT OF THE TREASURY
DIVISION OF TAXATION
APPROVED AS A TAX MAP PURSUANT TO THE AUTHORITY OF
N.J.S.A. 54:1-18 AND N.J.S.A. 54:50-1
FOR THE DIRECTOR, DIVISION OF TAXATION
Robert Robb
CHIEF, PROPERTY ADMINISTRATION
SUPERVISOR, TAX MAPS SECTION, VALUATION AND MAPPING
DATE FEB 11 2019 SERIAL NO. 1097

TAX MAP
TOWNSHIP OF VERNON
SUSSEX COUNTY, NEW JERSEY
SCALE: 1" = 200' NOVEMBER, 2017
RICHARD A. SCHULZ, P.E., P.L.S.
SPATIAL DATA LOGIC
285 DAVIDSON AVENUE
SOMERSET, NEW JERSEY, 08873