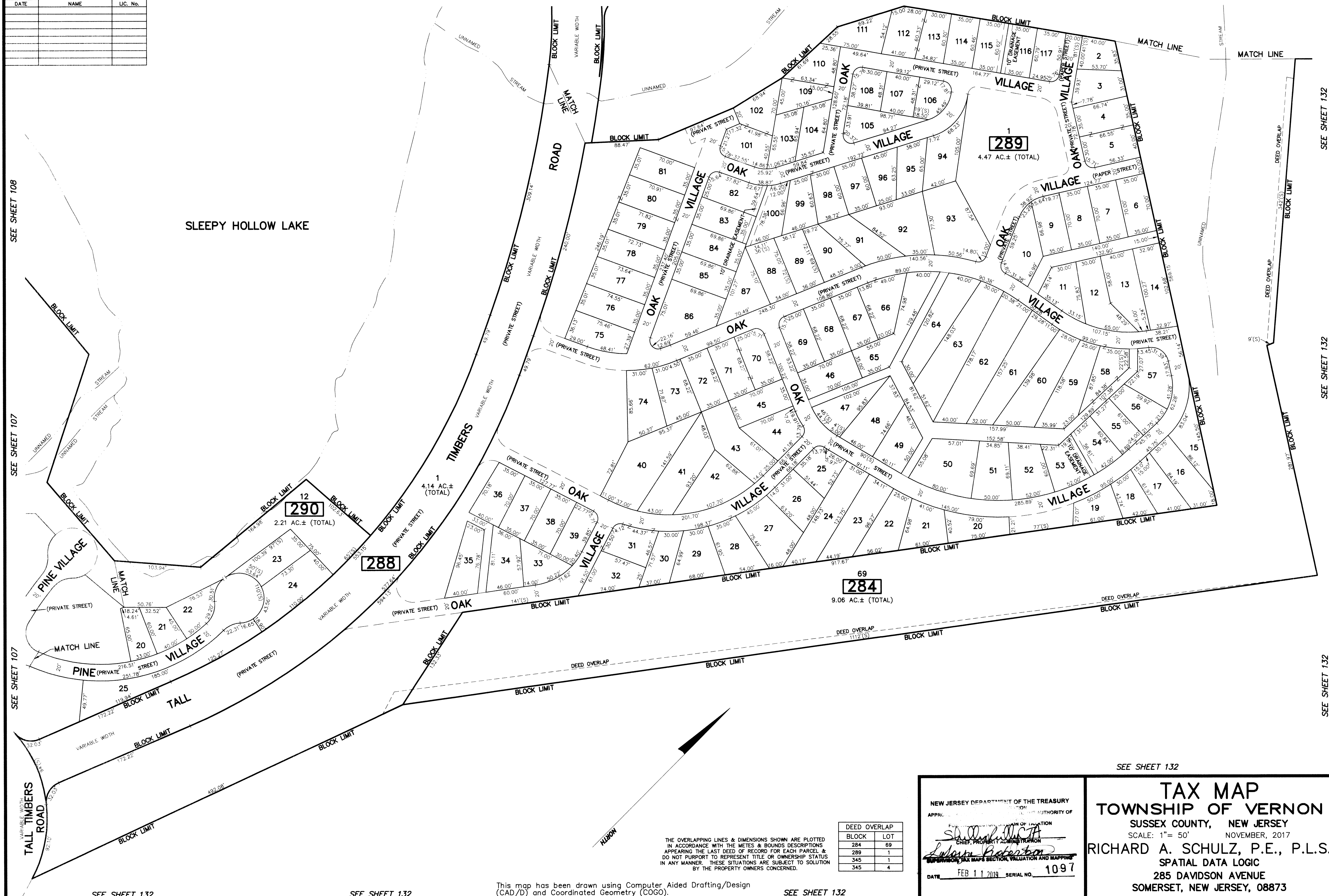


REVISIONS		
DATE	NAME	LIC. No.

SEE SHEET 108

SEE SHEET 110

SEE SHEET 110



SEE SHEET 108

SEE SHEET 107

SEE SHEET 107

SEE SHEET 132

SEE SHEET 132

This map has been drawn using Computer Aided Drafting/Design (CAD/D) and Coordinated Geometry (COGO).

SEE SHEET 132

SEE SHEET 132

SEE SHEET 132

SEE SHEET 132

SEE SHEET 132

DEED OVERLAP	
BLOCK	LOT
284	69
345	1
345	4

THE OVERLAPPING LINES & DIMENSIONS SHOWN ARE PLOTTED IN ACCORDANCE WITH THE METES & BOUNDS DESCRIPTIONS APPEARING IN THE LAST DEED OF RECORD FOR EACH PARCEL & DO NOT PURPORT TO REPRESENT TITLE OR OWNERSHIP STATUS IN ANY MANNER. THESE SITUATIONS ARE SUBJECT TO SOLUTION BY THE PROPERTY OWNERS CONCERNED.

NEW JERSEY DEPARTMENT OF THE TREASURY
 APPROPRIATION OF THE TAX AUTHORITY OF
 SUPERVISOR OF TAXATION
 SUPERVISOR OF TAX MAPS SECTION, VALUATION AND MAPPING
 DATE FEB 11 2019 SERIAL NO. 1097

TAX MAP
TOWNSHIP OF VERNON
 SUSSEX COUNTY, NEW JERSEY
 SCALE: 1" = 50' NOVEMBER, 2017
 RICHARD A. SCHULZ, P.E., P.L.S.
 SPATIAL DATA LOGIC
 285 DAVIDSON AVENUE
 SOMERSET, NEW JERSEY, 08873