

REVISIONS		
DATE	NAME	LIC. No.

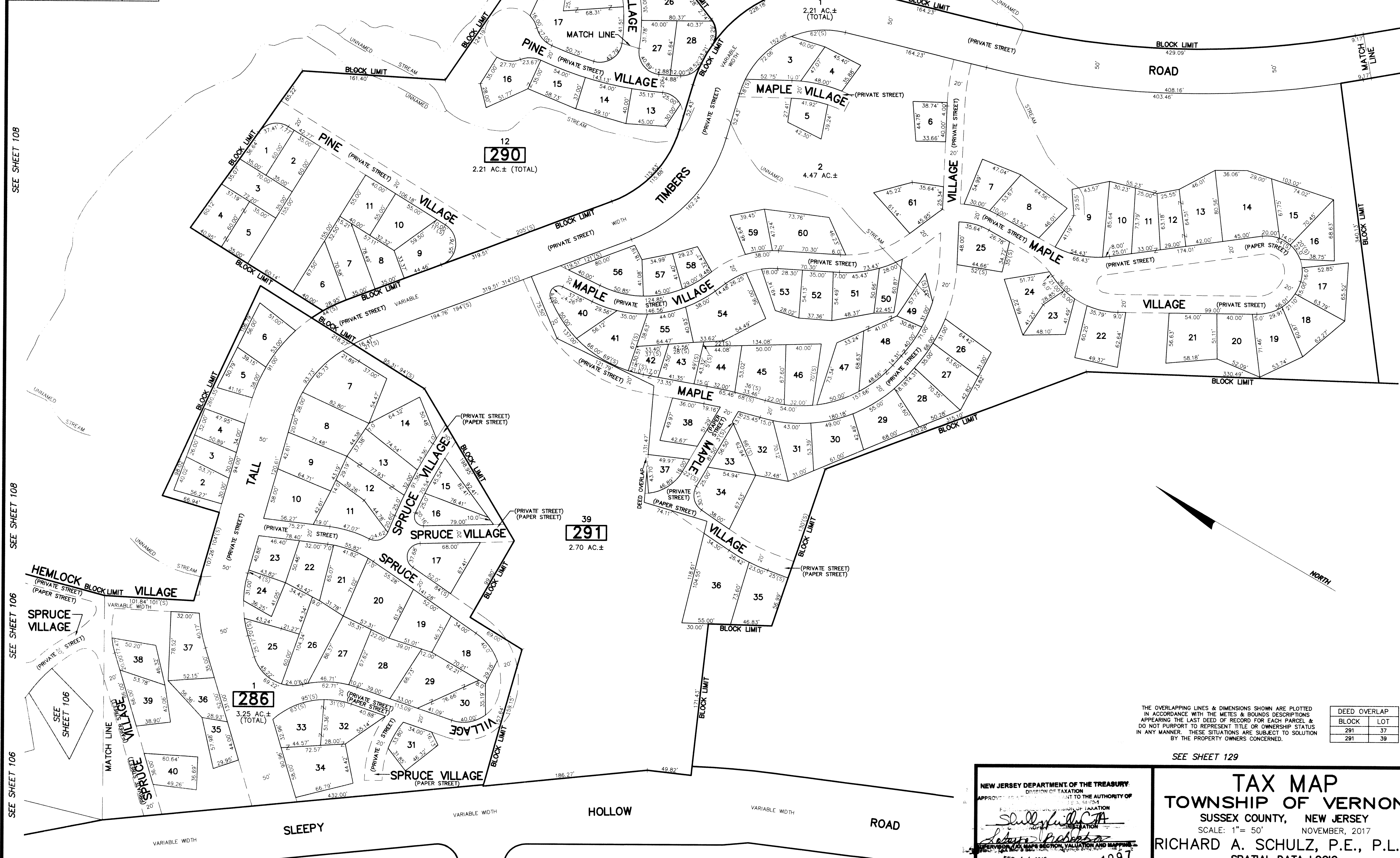
SEE SHEET 108

SEE SHEET 109

SEE SHEET 109

SEE SHEET 132

# SLEEPY HOLLOW LAKE



SEE SHEET 108

SEE SHEET 108

SEE SHEET 106

SEE SHEET 106

SEE SHEET 132

SEE SHEET 131

SEE SHEET 129

SEE SHEET 129

SEE SHEET 129

SEE SHEET 129

THE OVERLAPPING LINES & DIMENSIONS SHOWN ARE PLOTTED IN ACCORDANCE WITH THE METES & BOUNDS DESCRIPTIONS APPEARING IN THE LAST DEED OF RECORD FOR EACH PARCEL & DO NOT PURPORT TO REPRESENT TITLE OR OWNERSHIP STATUS IN ANY MANNER. THESE SITUATIONS ARE SUBJECT TO SOLUTION BY THE PROPERTY OWNERS CONCERNED.

DEED OVERLAP	
BLOCK	LOT
291	37
291	39

NEW JERSEY DEPARTMENT OF THE TREASURY  
 DIVISION OF TAXATION  
 APPROVED AS A PLAN TO THE AUTHORITY OF  
 STATE OF NEW JERSEY  
 DEPARTMENT OF TAXATION  
 SUPERVISOR OF TAX MAPS SECTION, VALUATION AND MAPPING  
 DATE FEB 11 2019 PERM NO. 1097

**TAX MAP**  
**TOWNSHIP OF VERNON**  
 SUSSEX COUNTY, NEW JERSEY  
 SCALE: 1" = 50' NOVEMBER, 2017  
 RICHARD A. SCHULZ, P.E., P.L.S.  
 SPATIAL DATA LOGIC  
 285 DAVIDSON AVENUE  
 SOMERSET, NEW JERSEY, 08873