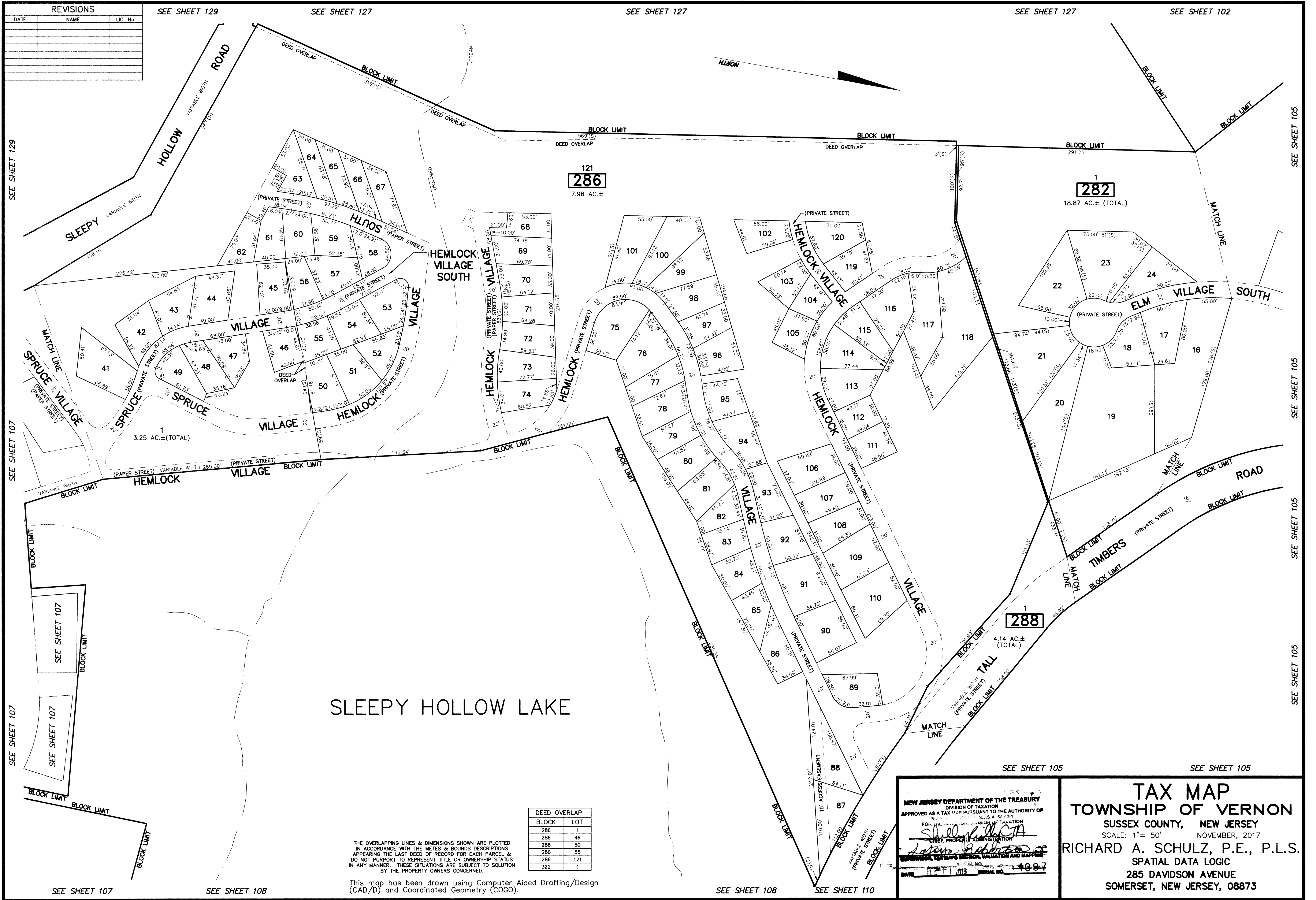


REVISIONS		
DATE	NAME	LIC. No.



121
286
7.96 AC.±

1
282
18.87 AC.± (TOTAL)

1
288
4.14 AC.± (TOTAL)

1
3.25 AC.± (TOTAL)

DEED OVERLAP	
BLOCK	LOT
286	1
286	46
286	50
286	55
286	121
322	1

THE OVERLAPPING LINES & DIMENSIONS SHOWN ARE PLOTTED IN ACCORDANCE WITH THE METES & BOUNDS DESCRIPTIONS APPEARING THE LAST DEED OF RECORD FOR EACH PARCEL & DO NOT PURPORT TO REPRESENT TITLE OR OWNERSHIP STATUS IN ANY MANNER. THESE SITUATIONS ARE SUBJECT TO SOLUTION BY THE PROPERTY OWNERS CONCERNED.

This map has been drawn using Computer Aided Drafting/Design (CAD/D) and Coordinated Geometry (COGO).

NEW JERSEY DEPARTMENT OF THE TREASURY
DIVISION OF TAXATION
APPROVED AS A TAX MAP PURSUANT TO THE AUTHORITY OF N.J.S.A. 54:2-4
FOR THE DIVISION OF TAXATION
Sheldon A. ...
CHIEF, PROPERTY ADMINISTRATION
Richard A. Schulz
TAX MAPS SECTION, VALUATION AND MAPPING
DATE: FEB 11 2019 SERIAL NO. 4887

TAX MAP
TOWNSHIP OF VERNON
SUSSEX COUNTY, NEW JERSEY
SCALE: 1" = 50' NOVEMBER, 2017
RICHARD A. SCHULZ, P.E., P.L.S.
SPATIAL DATA LOGIC
285 DAVIDSON AVENUE
SOMERSET, NEW JERSEY, 08873

SEE SHEET 129

SEE SHEET 107

SEE SHEET 107

SEE SHEET 107

SEE SHEET 108

SEE SHEET 108

SEE SHEET 110

SEE SHEET 105

SEE SHEET 105

SEE SHEET 105

SEE SHEET 105

SEE SHEET 105

SEE SHEET 105