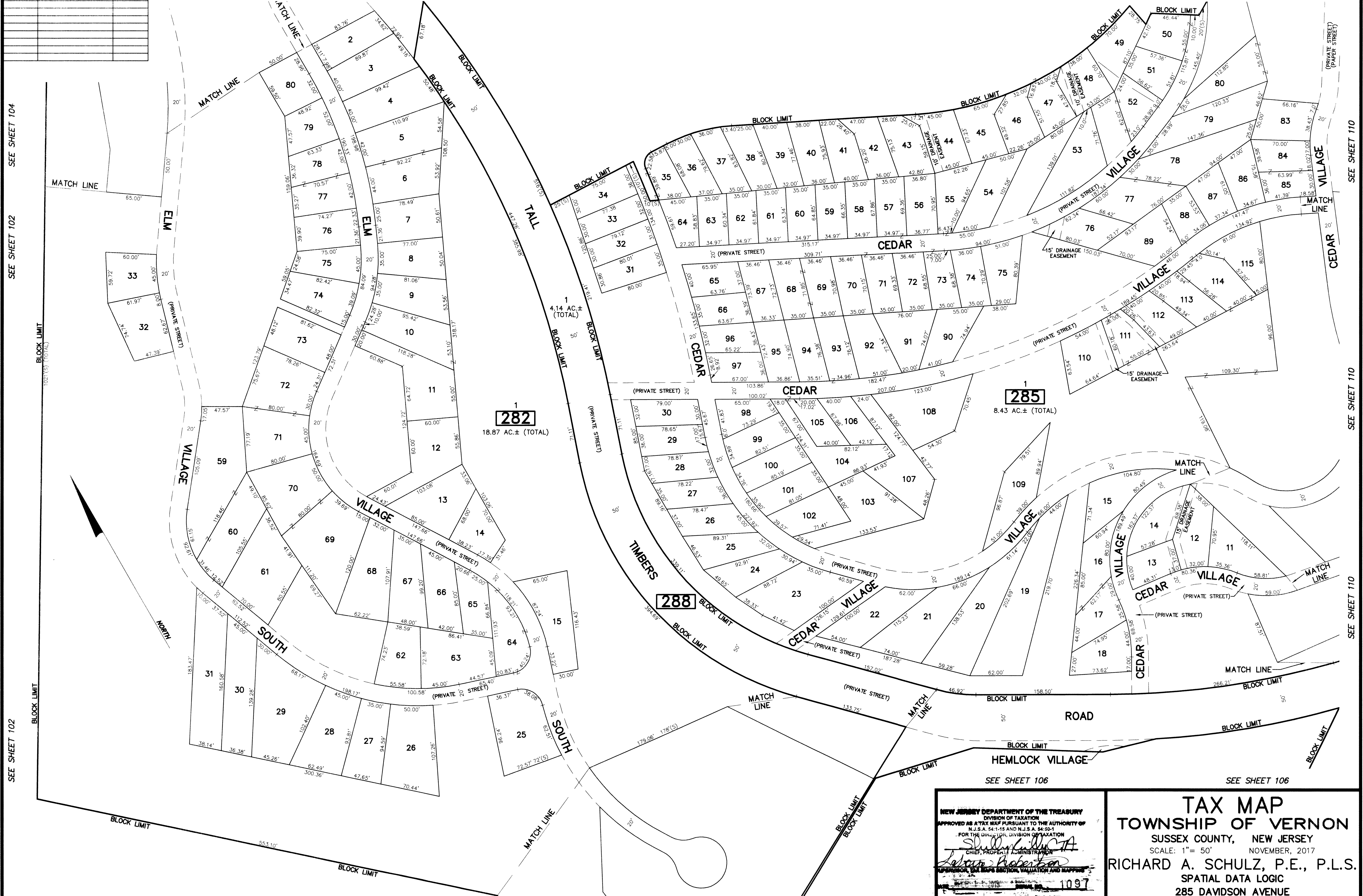


REVISIONS		
DATE	NAME	LC. No.

SEE SHEET 104 SEE SHEET 104 SEE SHEET 104 SEE SHEET 104 SEE SHEET 110



SEE SHEET 102 SEE SHEET 102 SEE SHEET 102 SEE SHEET 102 SEE SHEET 102

SEE SHEET 110 SEE SHEET 110 SEE SHEET 110 SEE SHEET 110 SEE SHEET 110

SEE SHEET 102 SEE SHEET 102 SEE SHEET 106 SEE SHEET 106

This map has been drawn using Computer Aided Drafting/Design (CAD/D) and Coordinated Geometry (COGO).

NEW JERSEY DEPARTMENT OF THE TREASURY
 DIVISION OF TAXATION
 APPROVED AS A TAX MAP PURSUANT TO THE AUTHORITY OF
 N.J.S.A. 54:1-15 AND N.J.S.A. 54:50-1
 FOR THE DIVISION OF TAXATION
Richard A. Schulz
 CHIEF, PROPERTY ADMINISTRATION
 SUPERVISOR, TAX MAPS SECTION, VALUATION AND MAPPING
 1097

TAX MAP
TOWNSHIP OF VERNON
 SUSSEX COUNTY, NEW JERSEY
 SCALE: 1" = 50' NOVEMBER, 2017
RICHARD A. SCHULZ, P.E., P.L.S.
 SPATIAL DATA LOGIC
 285 DAVIDSON AVENUE
 SOMERSET, NEW JERSEY, 08873