

REVISIONS		
DATE	NAME	LIC. No.

SEE SHEET 96 This map has been drawn using Computer Aided Drafting/Design (CAD/D) and Coordinated Geometry (COGO). SEE SHEET 96

SEE SHEET 96

SEE SHEET 93

SEE SHEET 93

SEE SHEET 102

SEE SHEET 102

SEE SHEET 104

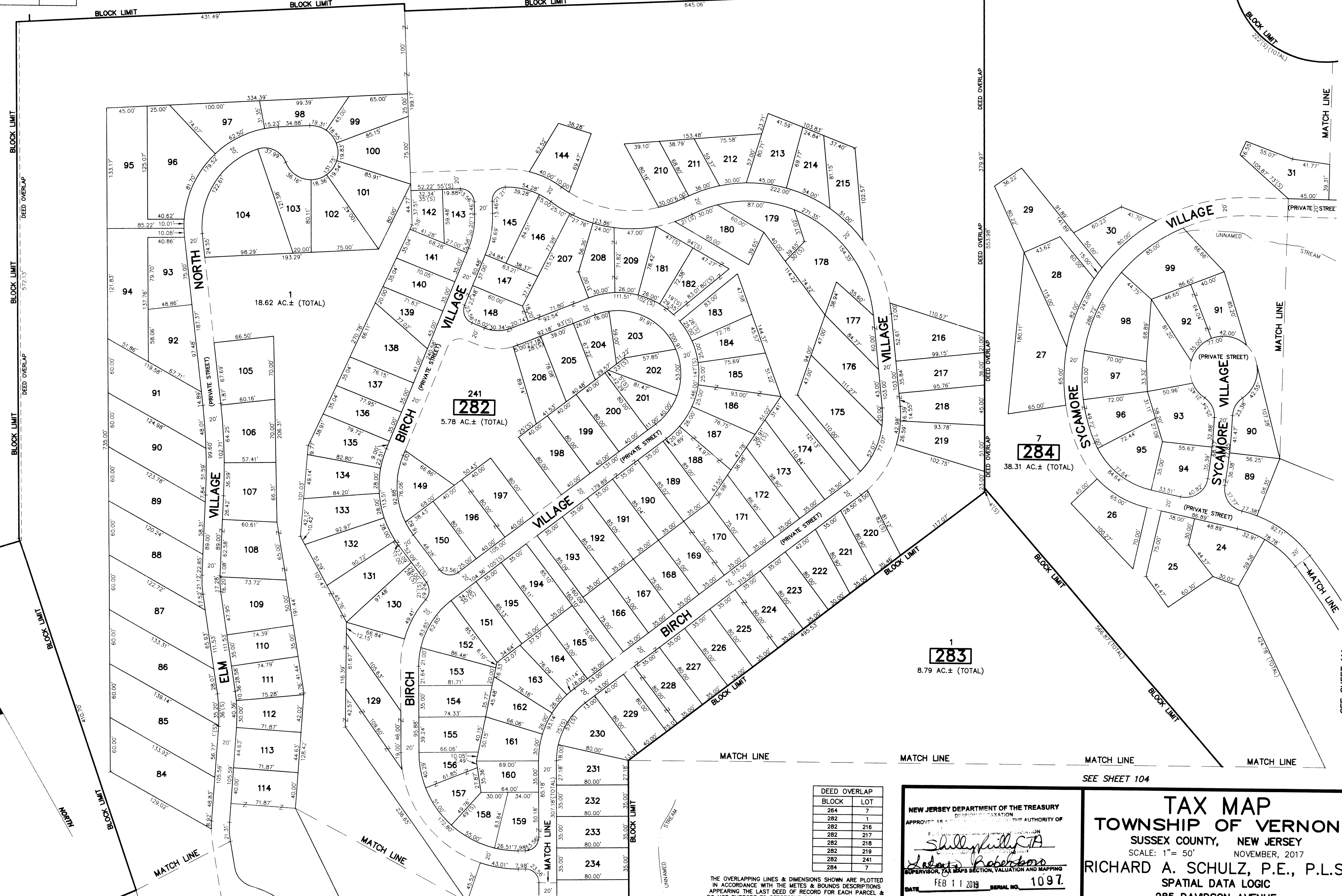
SEE SHEET 104

SEE SHEET 96

SEE SHEET 111

SEE SHEET 111

SEE SHEET 111



DEED OVERLAP	BLOCK	LOT
	264	7
	282	1
	282	216
	282	217
	282	218
	282	219
	282	241
	284	7

THE OVERLAPPING LINES & DIMENSIONS SHOWN ARE PLOTTED IN ACCORDANCE WITH THE METES & BOUNDS DESCRIPTIONS APPEARING IN THE LAST DEED OF RECORD FOR EACH PARCEL & DO NOT PURPORT TO REPRESENT TITLE OR OWNERSHIP STATUS IN ANY MANNER. THESE SITUATIONS ARE SUBJECT TO SOLUTION BY THE PROPERTY OWNERS CONCERNED.

NEW JERSEY DEPARTMENT OF THE TREASURY  
 APPROVED AS DIRECTOR OF TAXATION  
 SHILLY SHILLY  
 SUPERVISOR OF MAPS SECTION, VALUATION AND MAPPING  
 DATE FEB 11 2019 SERIAL NO. 1097

**TAX MAP**  
**TOWNSHIP OF VERNON**  
 SUSSEX COUNTY, NEW JERSEY  
 SCALE: 1" = 50' NOVEMBER, 2017  
**RICHARD A. SCHULZ, P.E., P.L.S.**  
 SPATIAL DATA LOGIC  
 285 DAVIDSON AVENUE  
 SOMERSET, NEW JERSEY, 08873