

REVISIONS		
DATE	NAME	LIC. No.

SEE SHEET 125

SEE SHEET 126

SEE SHEET 126

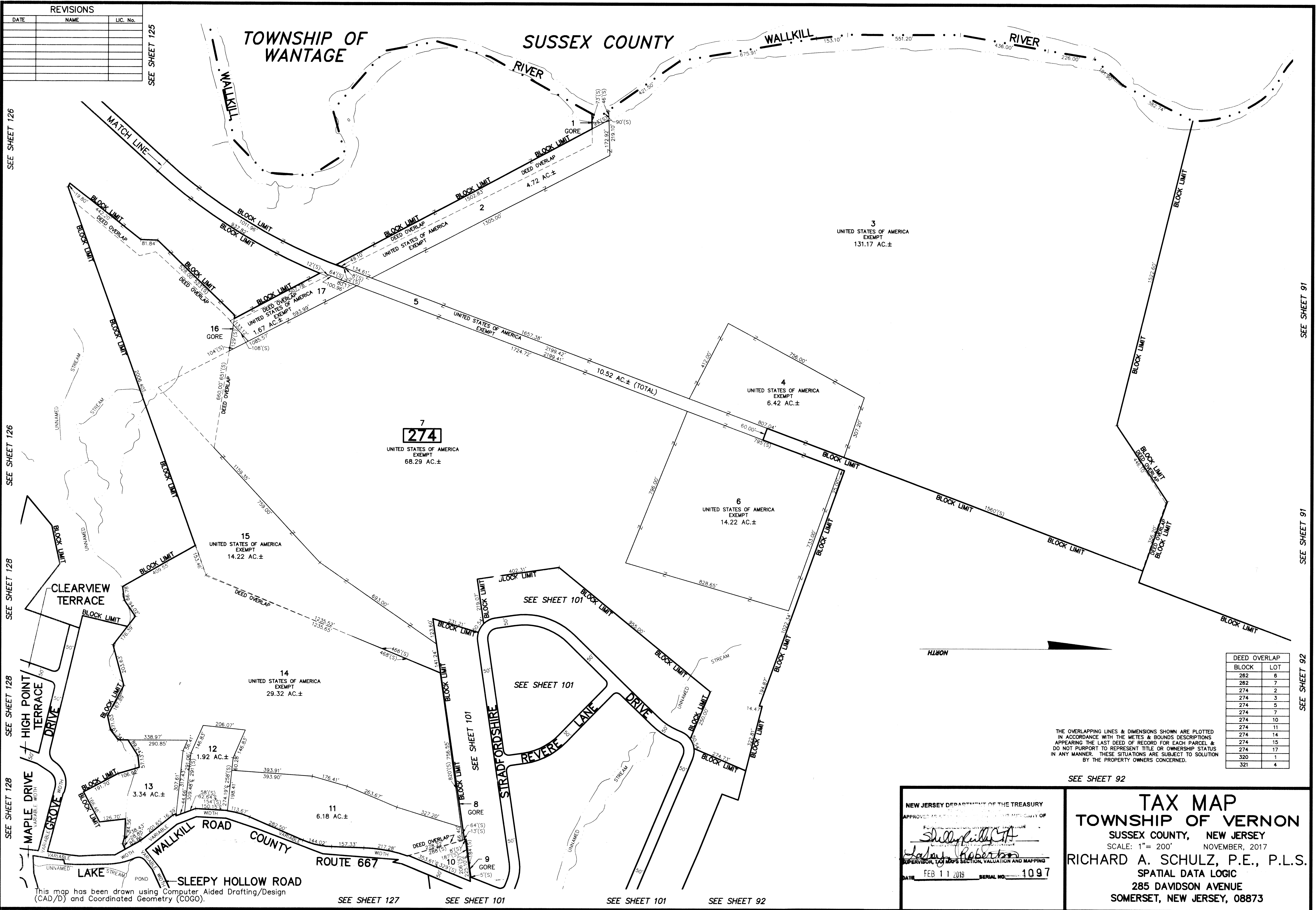
SEE SHEET 128

SEE SHEET 128

SEE SHEET 128

This map has been drawn using Computer Aided Drafting/Design (CAD/D) and Coordinated Geometry (COGO).

TOWNSHIP OF WANTAGE  
SUSSEX COUNTY



SEE SHEET 91

SEE SHEET 91

SEE SHEET 92

SEE SHEET 92



DEED OVERLAP	BLOCK	LOT
282	6	
282	7	
274	2	
274	3	
274	5	
274	7	
274	10	
274	11	
274	14	
274	15	
274	17	
320	1	
321	4	

THE OVERLAPPING LINES & DIMENSIONS SHOWN ARE PLOTTED IN ACCORDANCE WITH THE METES & BOUNDS DESCRIPTIONS APPEARING THE LAST DEED OF RECORD FOR EACH PARCEL & DO NOT PURPORT TO REPRESENT TITLE OR OWNERSHIP STATUS IN ANY MANNER. THESE SITUATIONS ARE SUBJECT TO SOLUTION BY THE PROPERTY OWNERS CONCERNED.

NEW JERSEY DEPARTMENT OF THE TREASURY  
APPROVED AS TO THE TECHNICAL ASPECTS OF THIS MAP BY  
*Shelly Killeen*  
SUPERVISOR, TAX MAPS SECTION, VALUATION AND MAPPING  
DATE FEB 11 2019 SERIAL NO. 1097

**TAX MAP**  
**TOWNSHIP OF VERNON**  
SUSSEX COUNTY, NEW JERSEY  
SCALE: 1" = 200' NOVEMBER, 2017  
**RICHARD A. SCHULZ, P.E., P.L.S.**  
SPATIAL DATA LOGIC  
285 DAVIDSON AVENUE  
SOMERSET, NEW JERSEY, 08873

SEE SHEET 127

SEE SHEET 101

SEE SHEET 101

SEE SHEET 92