

REVISIONS		
DATE	NAME	LIC. No.

SEE KEY MAP 2

SEE KEY MAP 2

SEE KEY MAP 2

SEE KEY MAP 3

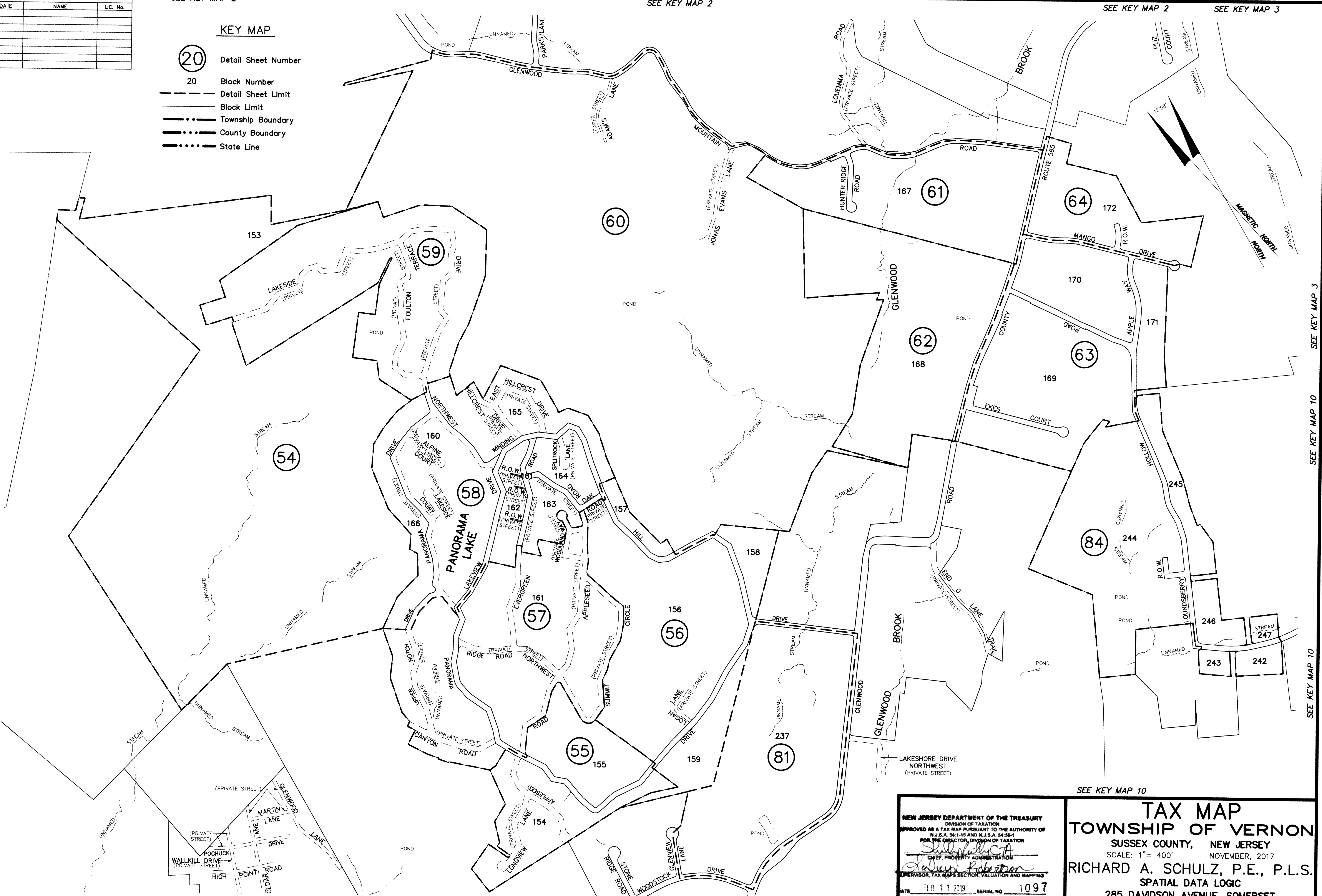
### KEY MAP

- 20 Detail Sheet Number
- 20 Block Number
- - - - - Detail Sheet Limit
- - - - - Block Limit
- . - . - Township Boundary
- . . . - County Boundary
- . . . . State Line

SEE KEY MAP 2

SEE KEY MAP 8

SEE KEY MAP 8



SEE KEY MAP 3

SEE KEY MAP 10

SEE KEY MAP 10

SEE KEY MAP 8

SEE KEY MAP 15

This map has been drawn using Computer Aided Drafting/Design (CAD/D) and Coordinated Geometry (COGO).

SEE KEY MAP 15

SEE KEY MAP 10

NEW JERSEY DEPARTMENT OF THE TREASURY  
 DIVISION OF TAXATION  
 APPROVED AS A TAX MAP PURSUANT TO THE AUTHORITY OF  
 N.J.S.A. 54:1-15 AND N.J.S.A. 54:50-1  
 FOR THE DIRECTOR, DIVISION OF TAXATION  
*Richard A. Schulz*  
 CHIEF, PROPERTY ADMINISTRATION  
*Robert A. ...*  
 SUPERVISOR, TAX MAPS SECTION, VALUATION AND MAPPING  
 DATE FEB 11 2019 SERIAL NO. 1097

**TAX MAP**  
**TOWNSHIP OF VERNON**  
 SUSSEX COUNTY, NEW JERSEY  
 SCALE: 1" = 400' NOVEMBER, 2017  
**RICHARD A. SCHULZ, P.E., P.L.S.**  
 SPATIAL DATA LOGIC  
 285 DAVIDSON AVENUE, SOMERSET  
 NEW JERSEY, 08873  
 TO SHOW CONDITIONS AS OF NOVEMBER 2017