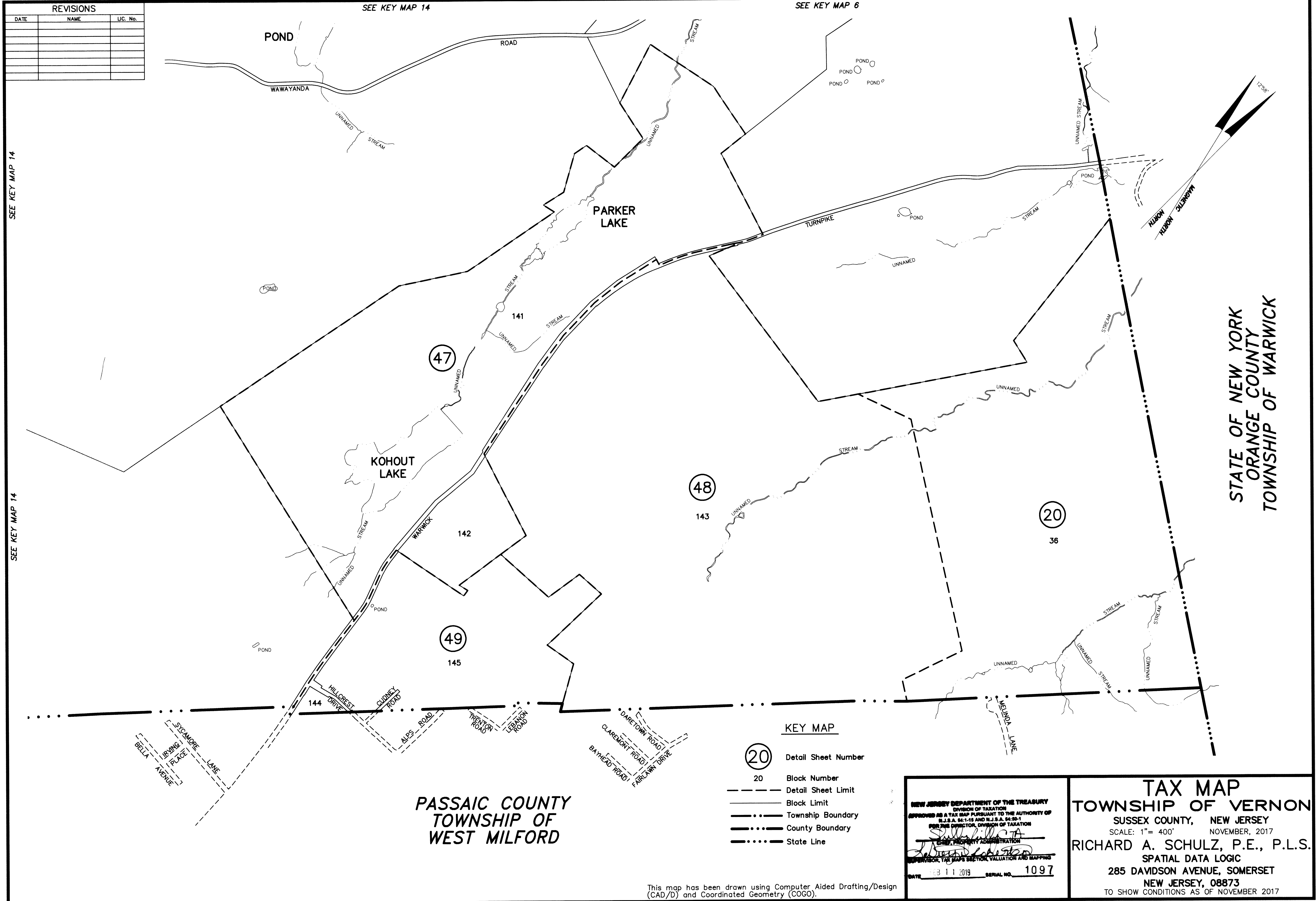


| REVISIONS | | |
|-----------|------|----------|
| DATE | NAME | LOC. No. |
| | | |
| | | |
| | | |
| | | |
| | | |
| | | |
| | | |
| | | |
| | | |
| | | |



SEE KEY MAP 14

SEE KEY MAP 14

SEE KEY MAP 14

SEE KEY MAP 6

STATE OF NEW YORK
ORANGE COUNTY
TOWNSHIP OF WARWICK

**PASSAIC COUNTY
TOWNSHIP OF
WEST MILFORD**

KEY MAP

- Detail Sheet Number
- Block Number
- Detail Sheet Limit
- Block Limit
- Township Boundary
- County Boundary
- State Line

NEW JERSEY DEPARTMENT OF THE TREASURY
DIVISION OF TAXATION
APPROVED AS A TAX MAP PURSUANT TO THE AUTHORITY OF
N.J.S.A. 54:1-16 AND N.J.S.A. 54:50-1
PER THE DIRECTOR, DIVISION OF TAXATION
Richard A. Schulz
CHIEF, PROPERTY ADMINISTRATION
SUPERVISOR, TAX MAPS SECTION, VALUATION AND MAPPING
DATE: FEB 11 2019 SERIAL NO. 1097

**TAX MAP
TOWNSHIP OF VERNON**
SUSSEX COUNTY, NEW JERSEY
SCALE: 1" = 400'
NOVEMBER, 2017
RICHARD A. SCHULZ, P.E., P.L.S.
SPATIAL DATA LOGIC
285 DAVIDSON AVENUE, SOMERSET
NEW JERSEY, 08873
TO SHOW CONDITIONS AS OF NOVEMBER 2017

This map has been drawn using Computer Aided Drafting/Design (CAD/D) and Coordinated Geometry (COGO).