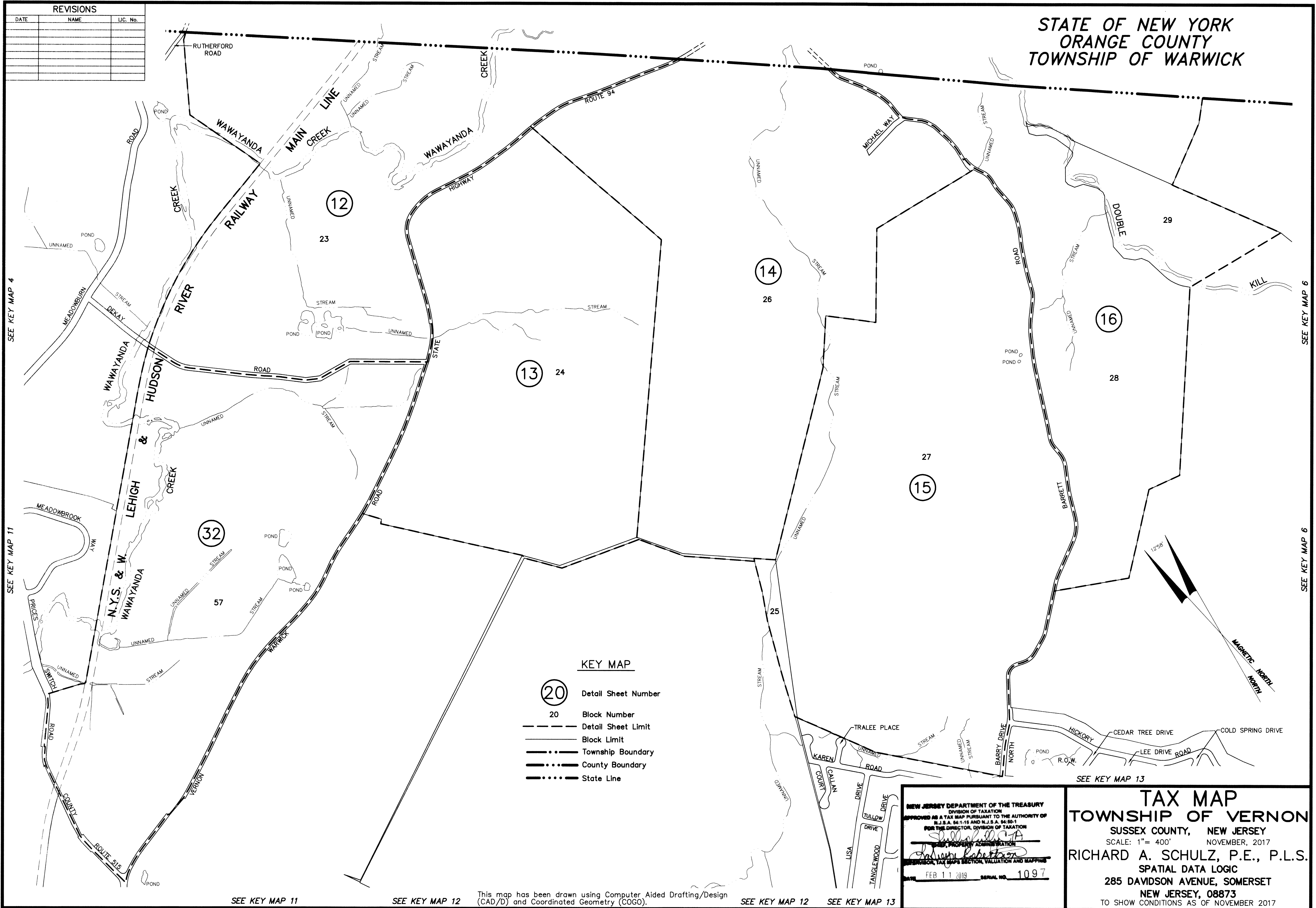


STATE OF NEW YORK
ORANGE COUNTY
TOWNSHIP OF WARWICK

REVISIONS		
DATE	NAME	LIC. No.



SEE KEY MAP 4

SEE KEY MAP 11

SEE KEY MAP 6

SEE KEY MAP 6

- KEY MAP**
- 20 Detail Sheet Number
 - 20 Block Number
 - Detail Sheet Limit
 - Block Limit
 - Township Boundary
 - County Boundary
 - State Line

SEE KEY MAP 11

SEE KEY MAP 12

This map has been drawn using Computer Aided Drafting/Design (CAD/D) and Coordinated Geometry (COGO).

SEE KEY MAP 12

SEE KEY MAP 13

NEW JERSEY DEPARTMENT OF THE TREASURY
DIVISION OF TAXATION
APPROVED AS A TAX MAP PURSUANT TO THE AUTHORITY OF
N.J.S.A. 54:1-15 AND N.J.S.A. 54:30-1
FOR THE DIRECTOR, DIVISION OF TAXATION
[Signature]
SUPERVISOR, TAX MAPS SECTION, VALUATION AND MAPPING
DATE FEB 11 2019 SERIAL NO. 1097

TAX MAP
TOWNSHIP OF VERNON
SUSSEX COUNTY, NEW JERSEY
SCALE: 1" = 400' NOVEMBER, 2017
RICHARD A. SCHULZ, P.E., P.L.S.
SPATIAL DATA LOGIC
285 DAVIDSON AVENUE, SOMERSET
NEW JERSEY, 08873
TO SHOW CONDITIONS AS OF NOVEMBER 2017