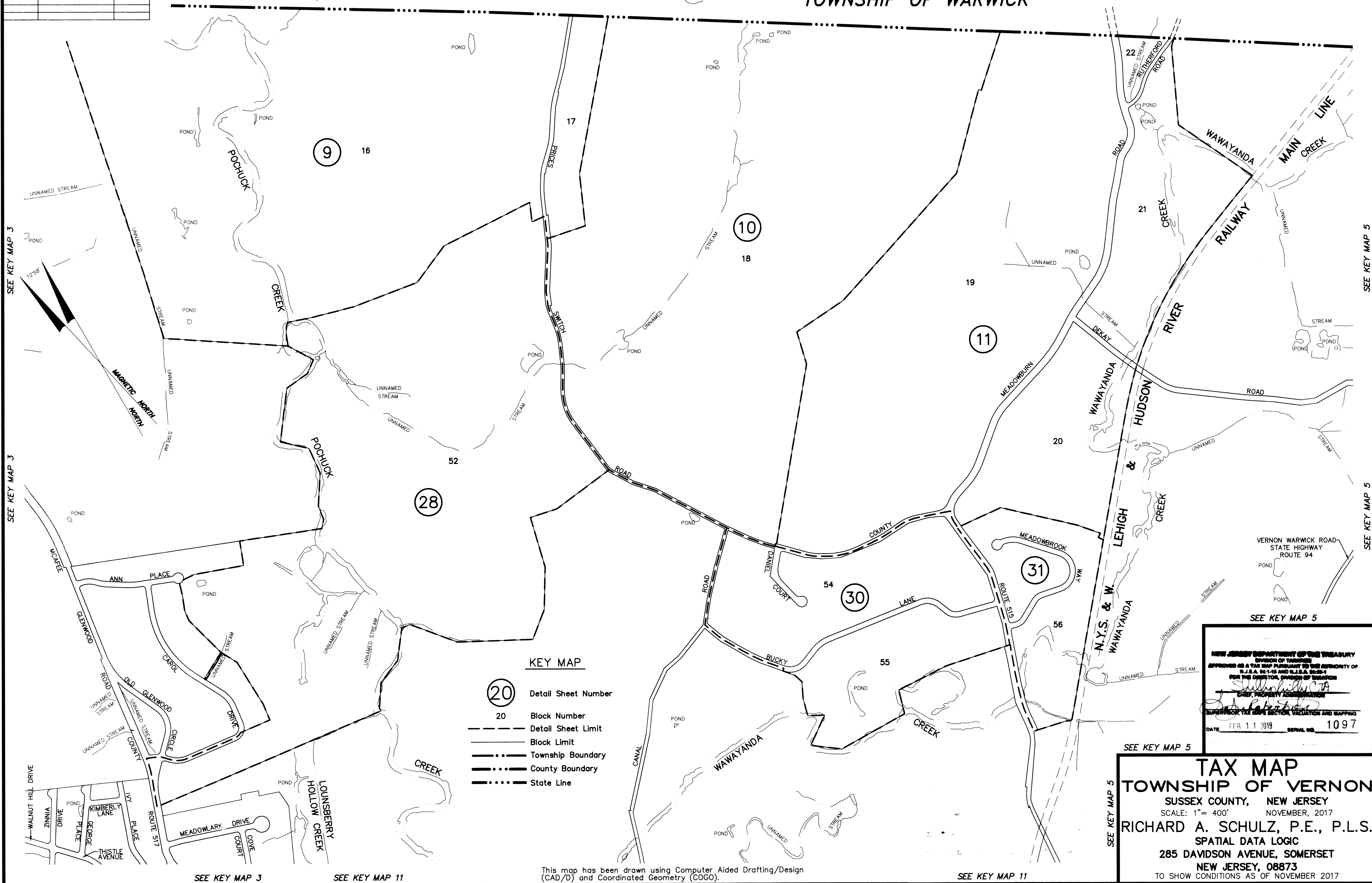


STATE OF NEW YORK ORANGE COUNTY TOWNSHIP OF WARWICK

| REVISIONS | | |
|-----------|------|---------|
| DATE | NAME | LC. No. |
| | | |
| | | |
| | | |
| | | |
| | | |
| | | |
| | | |
| | | |
| | | |
| | | |



KEY MAP

- 20 Detail Sheet Number
- 20 Block Number
- Detail Sheet Limit
- Block Limit
- - - Township Boundary
- · · County Boundary
- · - · - State Line

NEW JERSEY DEPARTMENT OF THE TREASURY
DIVISION OF TAXES
APPROVED AS A TAX MAP PURSUANT TO THE AUTHORITY OF
N.J.S.A. 54:1-15 AND N.J.S.A. 54:5-1
FOR THE DISTRICT, DIVISION OF TAXES
Sullivan
CHIEF, PROPERTY ADMINISTRATION
Richard A. Schulz
SUPERVISOR, TAX MAPS SECTION, VALUATION AND MAPPING
DATE: FEB 11 2019 SERIAL NO. 1097

SEE KEY MAP 5
TAX MAP
TOWNSHIP OF VERNON
SUSSEX COUNTY, NEW JERSEY
SCALE: 1" = 400' NOVEMBER, 2017
RICHARD A. SCHULZ, P.E., P.L.S.
SPATIAL DATA LOGIC
285 DAVIDSON AVENUE, SOMERSET
NEW JERSEY, 08873
TO SHOW CONDITIONS AS OF NOVEMBER 2017

This map has been drawn using Computer Aided Drafting/Design (CAD/D) and Coordinated Geometry (COGO).