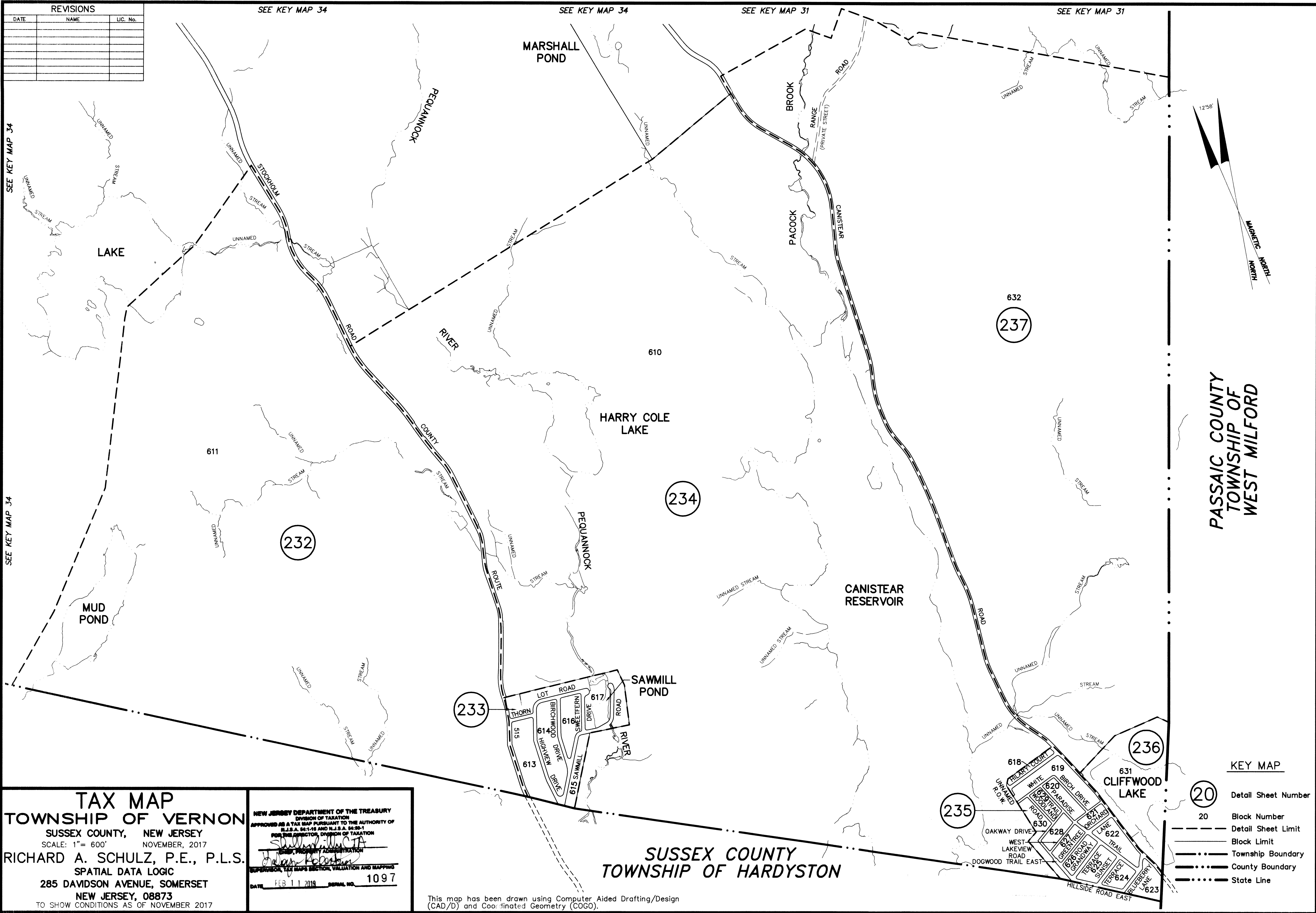


REVISIONS		
DATE	NAME	LIC. No.



TAX MAP
TOWNSHIP OF VERNON
 SUSSEX COUNTY, NEW JERSEY
 SCALE: 1" = 600' NOVEMBER, 2017
 RICHARD A. SCHULZ, P.E., P.L.S.
 SPATIAL DATA LOGIC
 285 DAVIDSON AVENUE, SOMERSET
 NEW JERSEY, 08873
 TO SHOW CONDITIONS AS OF NOVEMBER 2017

NEW JERSEY DEPARTMENT OF THE TREASURY
 DIVISION OF TAXATION
 APPROVED AS A TAX MAP PURSUANT TO THE AUTHORITY OF
 N.J.S.A. 54:1-16 AND N.J.S.A. 54:5B-1
 FOR THE DIRECTOR, DIVISION OF TAXATION
[Signature]
 TAX MAPS SECTION, VALUATION AND MAPPING
 DATE: FEB 11 2019 SERIAL NO. 1097

SUSSEX COUNTY
TOWNSHIP OF HARDYSTON

This map has been drawn using Computer Aided Drafting/Design (CAD/D) and Co-ordinated Geometry (COGO).

- KEY MAP**
- (20) Detail Sheet Number
 - 20 Block Number
 - Detail Sheet Limit
 - Block Limit
 - Township Boundary
 - County Boundary
 - State Line