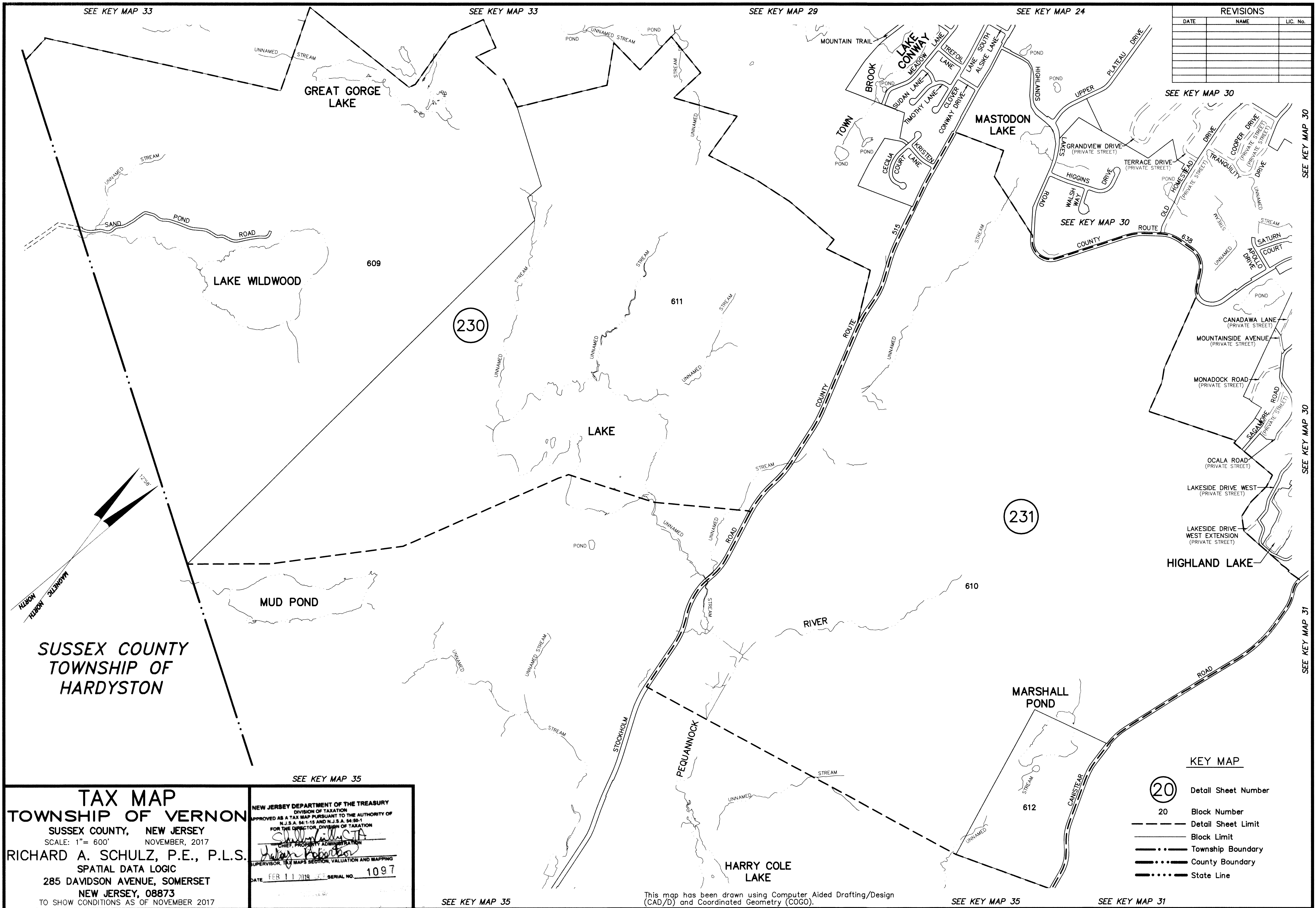


REVISIONS		
DATE	NAME	LIC. No.



**TAX MAP**  
**TOWNSHIP OF VERNON**  
 SUSSEX COUNTY, NEW JERSEY  
 SCALE: 1" = 600' NOVEMBER, 2017  
**RICHARD A. SCHULZ, P.E., P.L.S.**  
 SPATIAL DATA LOGIC  
 285 DAVIDSON AVENUE, SOMERSET  
 NEW JERSEY, 08873  
 TO SHOW CONDITIONS AS OF NOVEMBER 2017

NEW JERSEY DEPARTMENT OF THE TREASURY  
 DIVISION OF TAXATION  
 APPROVED AS A TAX MAP PURSUANT TO THE AUTHORITY OF  
 N.J.S.A. 54:1-15 AND N.J.S.A. 54:5B-1  
 FOR THE COMPTROLLER, DIVISION OF TAXATION  
*[Signature]*  
 CHIEF, PROPERTY ADMINISTRATION  
*[Signature]*  
 SUPERVISOR, TAX MAPS SECTION, VALUATION AND MAPPING  
 DATE FEB 11 2019 SERIAL NO. 1097

- KEY MAP**
- 20 Detail Sheet Number
  - 20 Block Number
  - Detail Sheet Limit
  - Block Limit
  - - - - - Township Boundary
  - County Boundary
  - ..... State Line

This map has been drawn using Computer Aided Drafting/Design (CAD/D) and Coordinated Geometry (COGO).