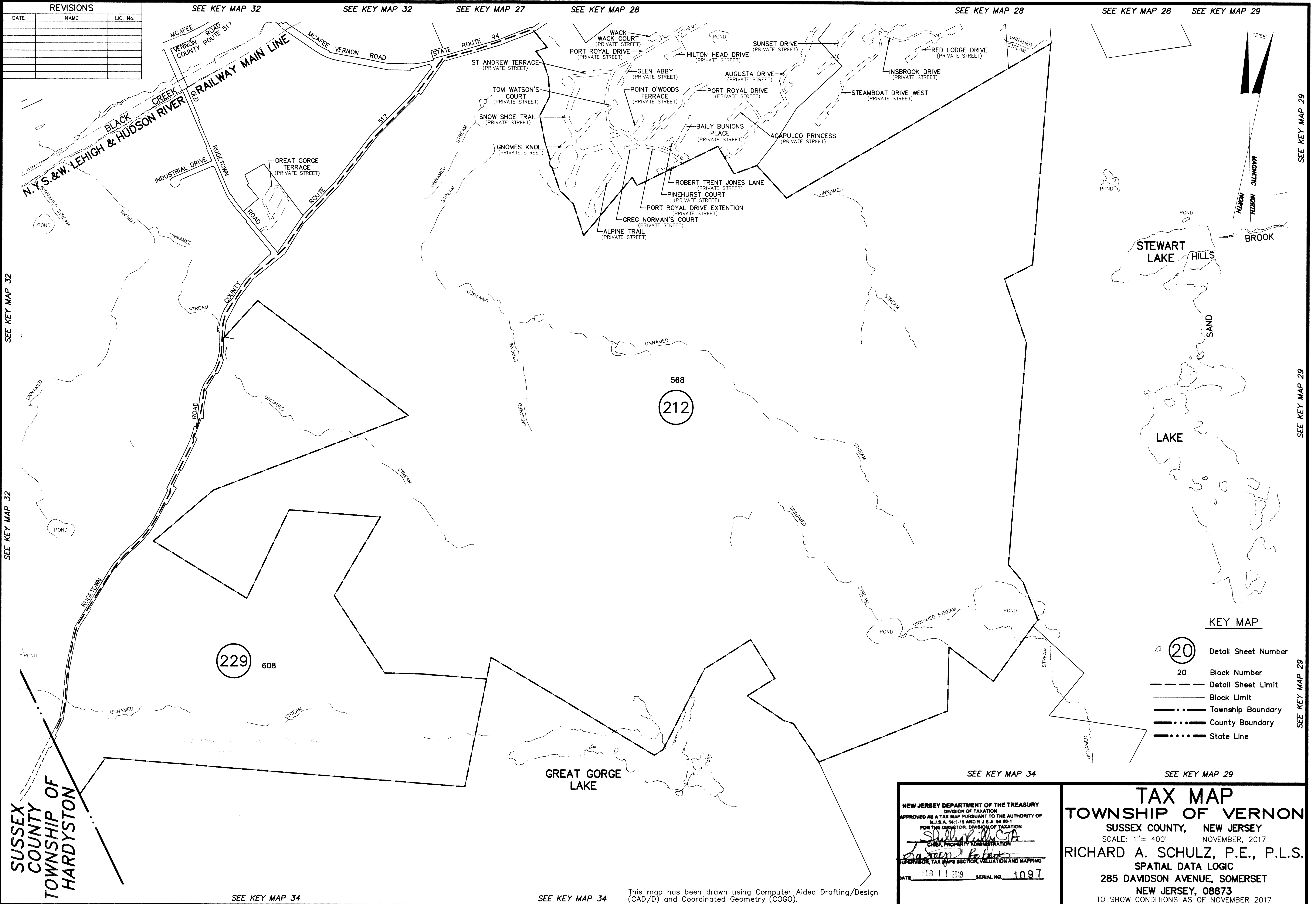


REVISIONS		
DATE	NAME	LIC. No.



SEE KEY MAP 32

SEE KEY MAP 32

SEE KEY MAP 32

SEE KEY MAP 32

SEE KEY MAP 27

SEE KEY MAP 28

SEE KEY MAP 28

SEE KEY MAP 28

SEE KEY MAP 29

SEE KEY MAP 29

SEE KEY MAP 29

SEE KEY MAP 29

SUSSEX COUNTY OF TOWNSHIP OF HARDYSTON

SEE KEY MAP 34

SEE KEY MAP 34

This map has been drawn using Computer Aided Drafting/Design (CAD/D) and Coordinated Geometry (COGO).

NEW JERSEY DEPARTMENT OF THE TREASURY
 DIVISION OF TAXATION
 APPROVED AS A TAX MAP PURSUANT TO THE AUTHORITY OF
 N.J.S.A. 54:1-15 AND N.J.S.A. 54:50-1
 FOR THE DIRECTOR, DIVISION OF TAXATION
Shirley G. G.A.
 CHIEF, PROPERTY ADMINISTRATION
Richard A. Schulz
 SUPERVISOR, TAX MAPS SECTION, VALUATION AND MAPPING
 DATE FEB 11 2019 SERIAL NO. 1097

TAX MAP
TOWNSHIP OF VERNON
 SUSSEX COUNTY, NEW JERSEY
 SCALE: 1" = 400' NOVEMBER, 2017
RICHARD A. SCHULZ, P.E., P.L.S.
 SPATIAL DATA LOGIC
 285 DAVIDSON AVENUE, SOMERSET
 NEW JERSEY, 08873
 TO SHOW CONDITIONS AS OF NOVEMBER 2017