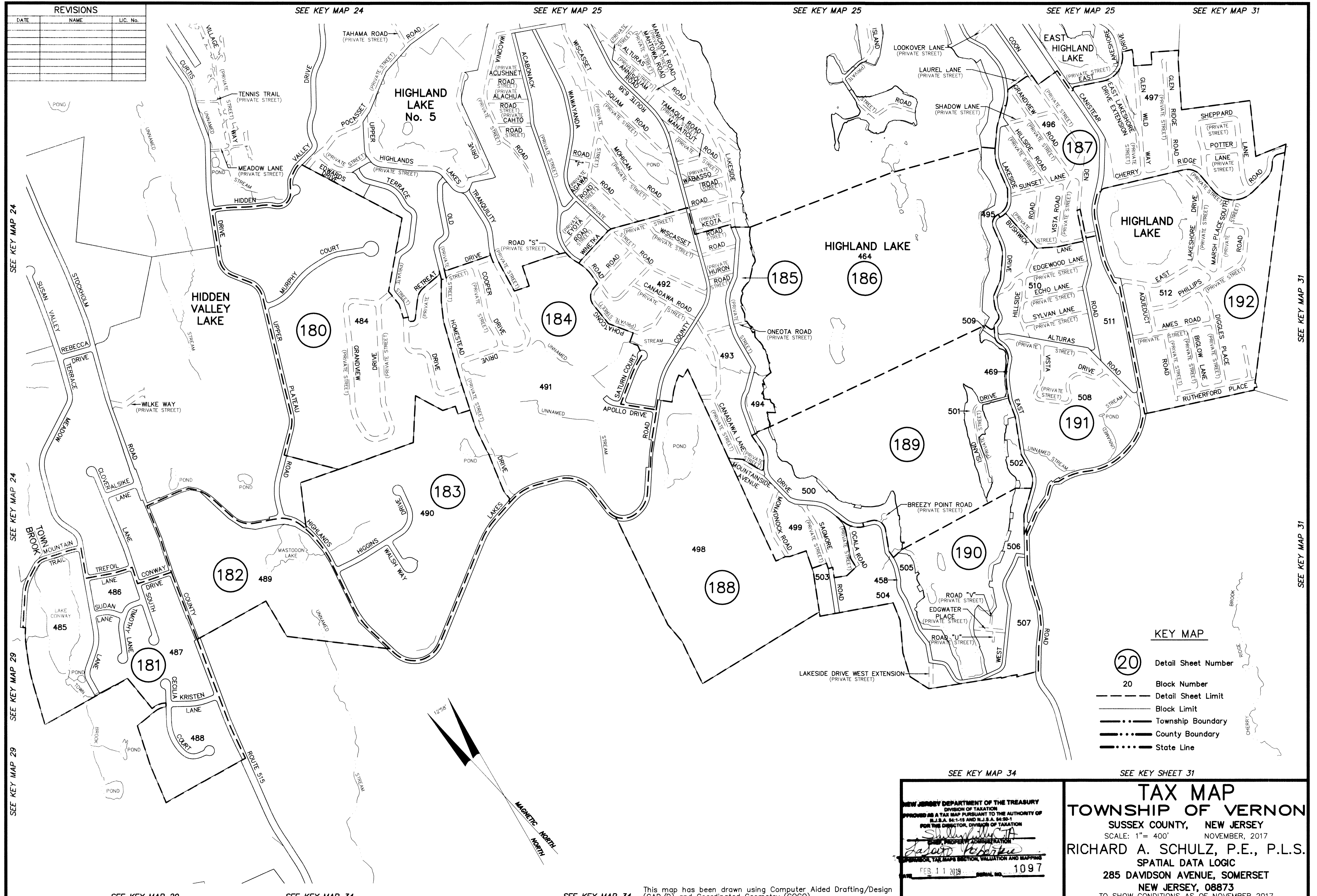


REVISIONS		
DATE	NAME	LIC. No.



SEE KEY MAP 24  
SEE KEY MAP 24  
SEE KEY MAP 24  
SEE KEY MAP 29  
SEE KEY MAP 29  
SEE KEY MAP 29

SEE KEY MAP 24  
SEE KEY MAP 25  
SEE KEY MAP 25  
SEE KEY MAP 25  
SEE KEY MAP 31

SEE KEY MAP 31  
SEE KEY MAP 31

SEE KEY MAP 29  
SEE KEY MAP 34

SEE KEY MAP 34

This map has been drawn using Computer Aided Drafting/Design (CAD/D) and Coordinated Geometry (COGO).

**KEY MAP**

- 20 Detail Sheet Number
- 20 Block Number
- Detail Sheet Limit
- Block Limit
- Township Boundary
- County Boundary
- State Line

SEE KEY MAP 34

NEW JERSEY DEPARTMENT OF THE TREASURY  
DIVISION OF TAXATION  
PREPARED AS A TAX MAP PURSUANT TO THE AUTHORITY OF  
N.J.S.A. 54:1-15 AND N.J.S.A. 54:50-1  
FOR THE DIRECTOR, DIVISION OF TAXATION

*Richard A. Schulz, P.E., P.L.S.*  
SPATIAL DATA LOGIC  
FEB 11 2019

SEE KEY SHEET 31

**TAX MAP**  
**TOWNSHIP OF VERNON**  
SUSSEX COUNTY, NEW JERSEY  
SCALE: 1" = 400' NOVEMBER, 2017  
**RICHARD A. SCHULZ, P.E., P.L.S.**  
SPATIAL DATA LOGIC  
285 DAVIDSON AVENUE, SOMERSET  
NEW JERSEY, 08873  
TO SHOW CONDITIONS AS OF NOVEMBER 2017