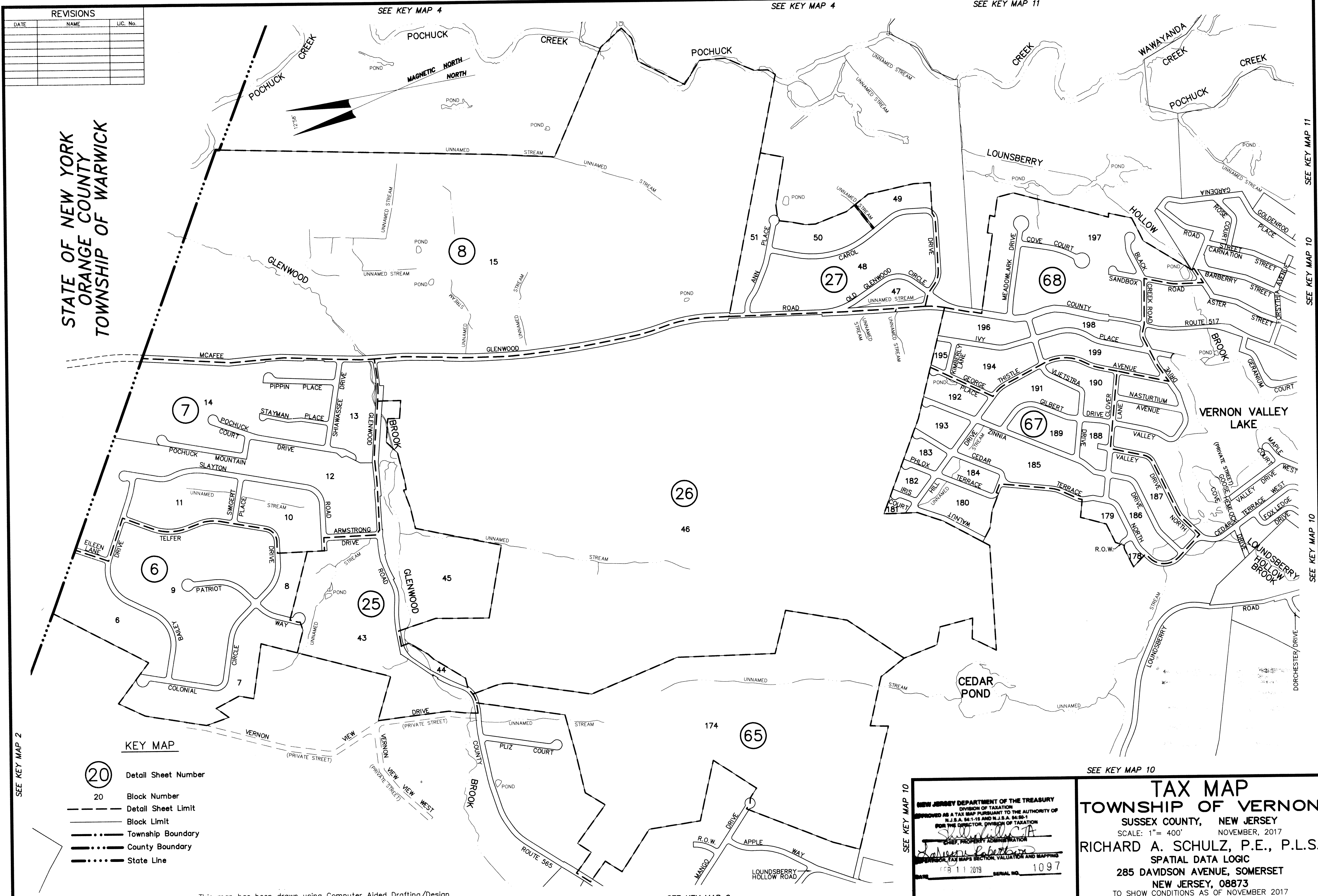


REVISIONS		
DATE	NAME	L.C. No.

STATE OF NEW YORK  
ORANGE COUNTY  
TOWNSHIP OF WARWICK



**KEY MAP**

- 20 Detail Sheet Number
- 20 Block Number
- - - - - Detail Sheet Limit
- — — — — Block Limit
- ..... Township Boundary
- ..... County Boundary
- ..... State Line

SEE KEY MAP 2

This map has been drawn using Computer Aided Drafting/Design (CAD/D) and Coordinated Geometry (COGO).

SEE KEY MAP 2

SEE KEY MAP 9

NEW JERSEY DEPARTMENT OF THE TREASURY  
DIVISION OF TAXATION  
APPROVED AS A TAX MAP PURSUANT TO THE AUTHORITY OF  
N.J.S.A. 54:1-15 AND N.J.S.A. 54:28-1  
FOR THE COMPTROLLER, DIVISION OF TAXATION  
*Richard A. Schulz*  
CHIEF, PROPERTY ADMINISTRATION  
SUPERVISOR, TAX MAPS SECTION, VALUATION AND MAPPING  
DATE: FEB 11 2019 SERIAL NO. 1097

**TAX MAP**  
**TOWNSHIP OF VERNON**  
SUSSEX COUNTY, NEW JERSEY  
SCALE: 1" = 400' NOVEMBER, 2017  
**RICHARD A. SCHULZ, P.E., P.L.S.**  
SPATIAL DATA LOGIC  
285 DAVIDSON AVENUE, SOMERSET  
NEW JERSEY, 08873  
TO SHOW CONDITIONS AS OF NOVEMBER 2017