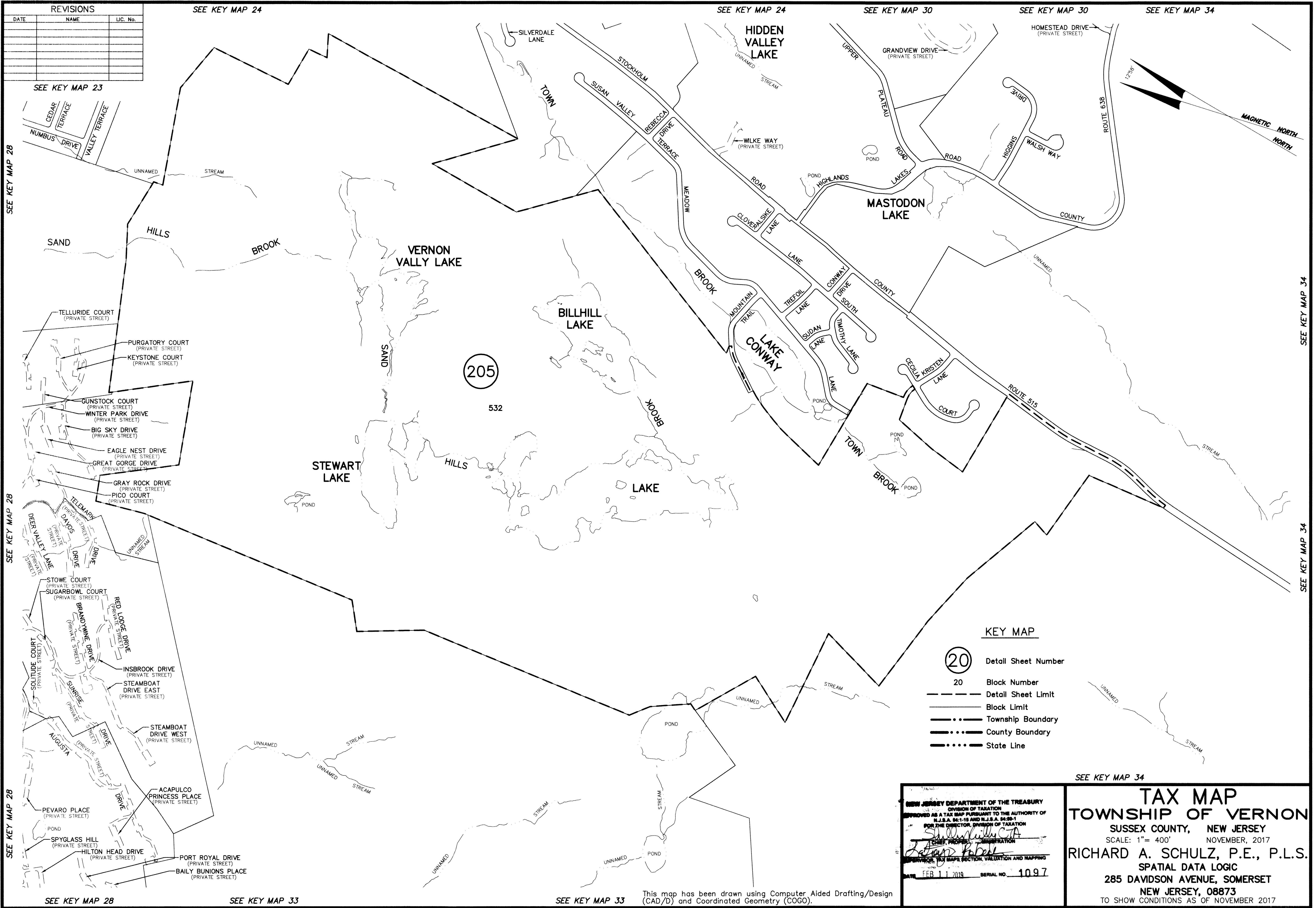


REVISIONS		
DATE	NAME	L.C. No.



SEE KEY MAP 23
SEE KEY MAP 28
SEE KEY MAP 28
SEE KEY MAP 28
SEE KEY MAP 28

SEE KEY MAP 24
SEE KEY MAP 24
SEE KEY MAP 30
SEE KEY MAP 30
SEE KEY MAP 34
SEE KEY MAP 34
SEE KEY MAP 34
SEE KEY MAP 34

KEY MAP

- Detail Sheet Number
- Block Number
- Detail Sheet Limit
- Block Limit
- Township Boundary
- County Boundary
- State Line

NEW JERSEY DEPARTMENT OF THE TREASURY
DIVISION OF TAXATION
APPROVED AS A TAX MAP PURSUANT TO THE AUTHORITY OF
R.S.A. 94:118 AND R.S.A. 94:90-1
FOR THE DIRECTOR, DIVISION OF TAXATION
Shelly Kelly, CPA
TAXES, PROPERTY ADMINISTRATION
Richard A. Schulz, P.E., P.L.S.
SPATIAL DATA LOGIC
DATE: FEB 11 2019 SERIAL NO. 1097

SEE KEY MAP 34

TAX MAP
TOWNSHIP OF VERNON
SUSSEX COUNTY, NEW JERSEY
SCALE: 1" = 400' NOVEMBER, 2017
RICHARD A. SCHULZ, P.E., P.L.S.
SPATIAL DATA LOGIC
285 DAVIDSON AVENUE, SOMERSET
NEW JERSEY, 08873
TO SHOW CONDITIONS AS OF NOVEMBER 2017

This map has been drawn using Computer Aided Drafting/Design (CAD/D) and Coordinated Geometry (COGO).