

REVISIONS		
DATE	NAME	LC. No.







SEE KEY MAP 20

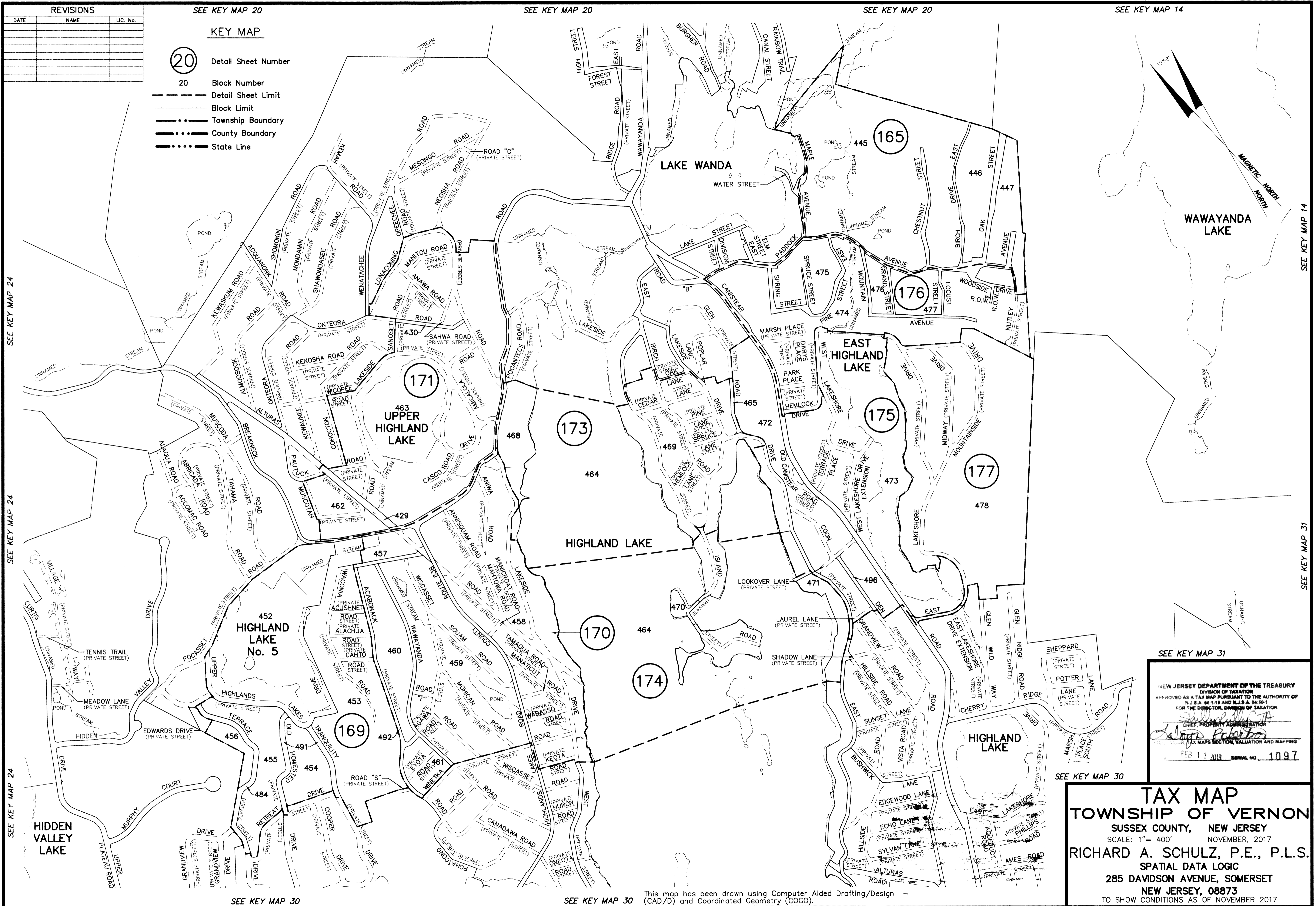
SEE KEY MAP 20

SEE KEY MAP 20

SEE KEY MAP 14

KEY MAP

-  Detail Sheet Number
- 20 Block Number
-  Detail Sheet Limit
-  Block Limit
-  Township Boundary
-  County Boundary
-  State Line



SEE KEY MAP 24

SEE KEY MAP 24

SEE KEY MAP 24

SEE KEY MAP 14

SEE KEY MAP 31

SEE KEY MAP 31

NEW JERSEY DEPARTMENT OF THE TREASURY
 DIVISION OF TAXATION
 APPROVED AS A TAX MAP PURSUANT TO THE AUTHORITY OF
 N.J.S.A. 54:1-18 AND N.J.S.A. 54:10-1
 FOR THE DIRECTOR, DIVISION OF TAXATION

Richard A. Schulz
 CHIEF PROPERTY ADMINISTRATION

Wynne Roberts
 TAX MAPS SECTION, VALUATION AND MAPPING

FEB 11 2019 SERIAL NO. 1097

TAX MAP
TOWNSHIP OF VERNON
 SUSSEX COUNTY, NEW JERSEY
 SCALE: 1" = 400' NOVEMBER, 2017
 RICHARD A. SCHULZ, P.E., P.L.S.
 SPATIAL DATA LOGIC
 285 DAVIDSON AVENUE, SOMERSET
 NEW JERSEY, 08873
 TO SHOW CONDITIONS AS OF NOVEMBER 2017

This map has been drawn using Computer Aided Drafting/Design (CAD/D) and Coordinated Geometry (COGO).