

REVISIONS		
DATE	NAME	LIC. No.

SEE KEY MAP 28

SEE KEY MAP 23

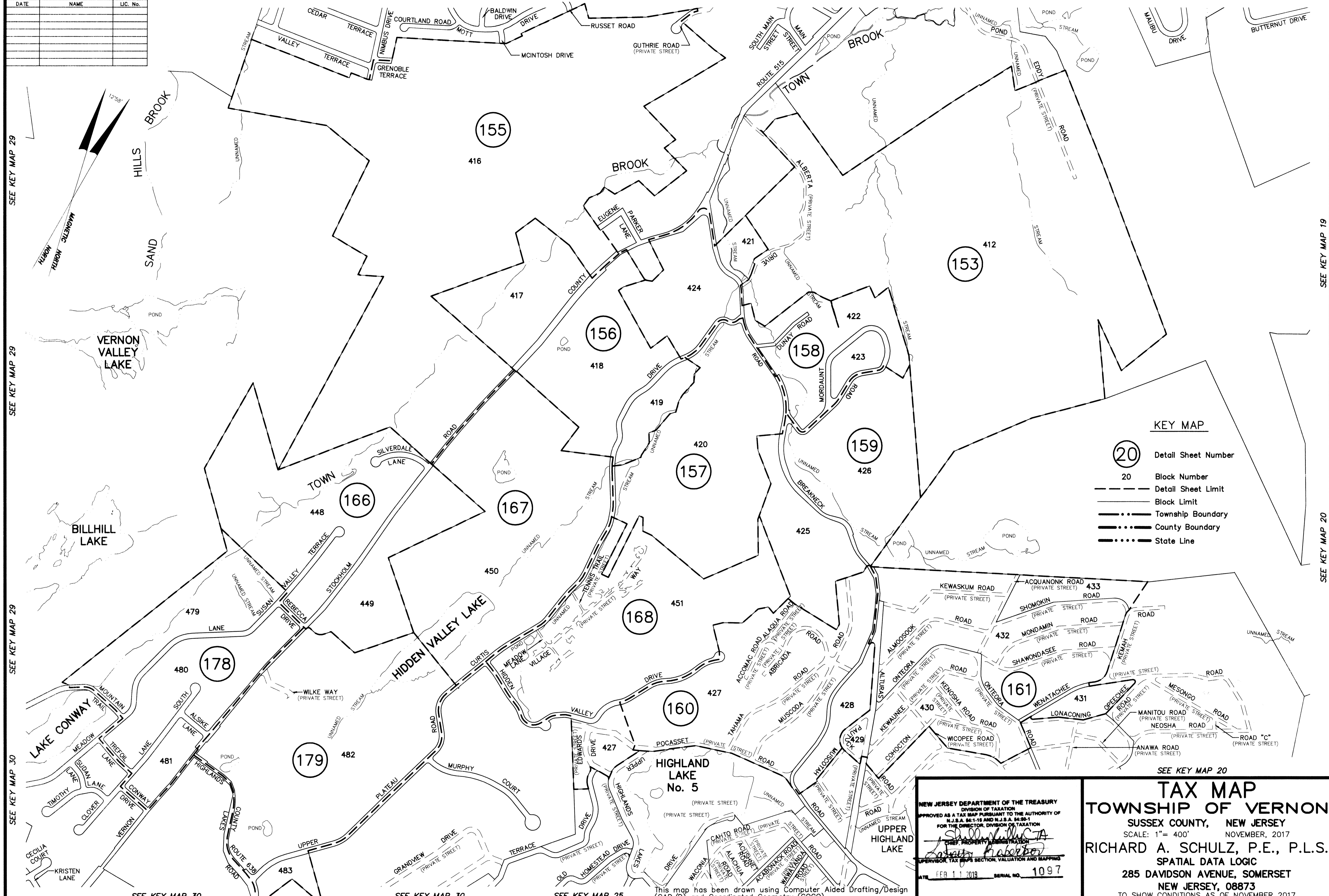
SEE KEY MAP 23

SEE KEY MAP 23

SEE KEY SHEET 19

SEE KEY MAP 29
SEE KEY MAP 29
SEE KEY MAP 29
SEE KEY MAP 29
SEE KEY MAP 30

SEE KEY MAP 19
SEE KEY MAP 20



KEY MAP

- 20 Detail Sheet Number
- 20 Block Number
- Detail Sheet Limit
- Block Limit
- Township Boundary
- County Boundary
- State Line

SEE KEY MAP 20

NEW JERSEY DEPARTMENT OF THE TREASURY
DIVISION OF TAXATION
APPROVED AS A TAX MAP PURSUANT TO THE AUTHORITY OF
N.J.S.A. 54:118 AND N.J.S.A. 54:30-1
FOR THE DIRECTOR, DIVISION OF TAXATION
Richard A. Schulz
CHIEF PROPERTY ADMINISTRATION
SUPERVISOR, TAX MAPS SECTION, VALUATION AND MAPPING
DATE: FEB 11 2018 SERIAL NO. 1097

TAX MAP
TOWNSHIP OF VERNON
SUSSEX COUNTY, NEW JERSEY
SCALE: 1" = 400' NOVEMBER, 2017
RICHARD A. SCHULZ, P.E., P.L.S.
SPATIAL DATA LOGIC
285 DAVIDSON AVENUE, SOMERSET
NEW JERSEY, 08873
TO SHOW CONDITIONS AS OF NOVEMBER 2017

This map has been drawn using Computer Aided Drafting/Design (CAD/D) and Coordinated Geometry (COGO).