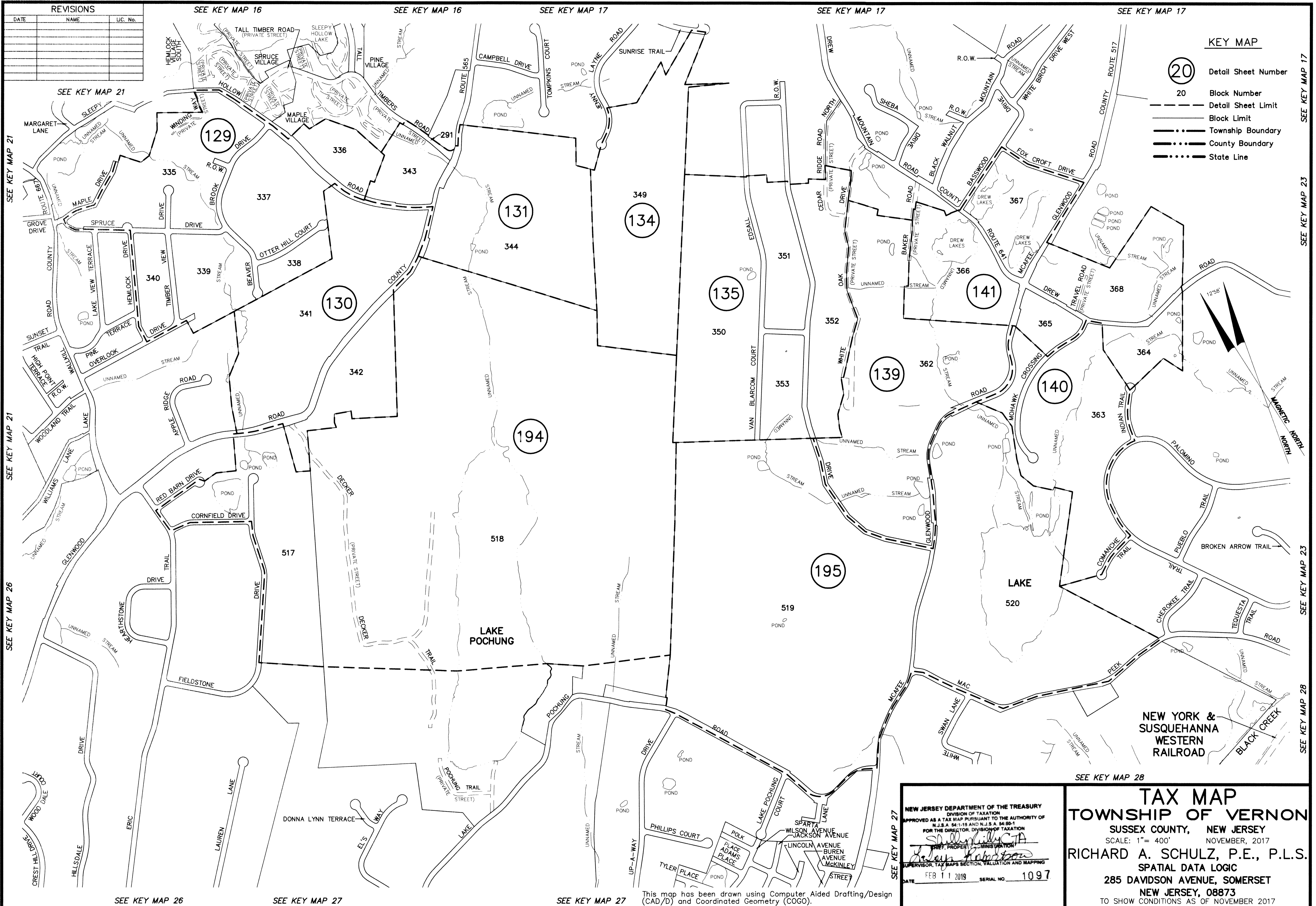


# KEY MAP 22

REVISIONS		
DATE	NAME	LIC. No.



SEE KEY MAP 21  
SEE KEY MAP 21  
SEE KEY MAP 21  
SEE KEY MAP 26  
SEE KEY MAP 26  
SEE KEY MAP 26

SEE KEY MAP 17  
SEE KEY MAP 17  
SEE KEY MAP 17  
SEE KEY MAP 17  
SEE KEY MAP 23  
SEE KEY MAP 23  
SEE KEY MAP 23  
SEE KEY MAP 28  
SEE KEY MAP 28  
SEE KEY MAP 28

NEW JERSEY DEPARTMENT OF THE TREASURY  
DIVISION OF TAXATION  
APPROVED AS A TAX MAP PURSUANT TO THE AUTHORITY OF  
N.J.S.A. 54:1-15 AND N.J.S.A. 54:50-1  
FOR THE DIRECTOR, DIVISION OF TAXATION  
*Richard A. Schulz, P.E., P.L.S.*  
SUPERVISOR, TAX MAPS SECTION, VALUATION AND MAPPING  
DATE FEB 11 2019 SERIAL NO. 1097

**TAX MAP**  
**TOWNSHIP OF VERNON**  
SUSSEX COUNTY, NEW JERSEY  
SCALE: 1" = 400' NOVEMBER, 2017  
**RICHARD A. SCHULZ, P.E., P.L.S.**  
SPATIAL DATA LOGIC  
285 DAVIDSON AVENUE, SOMERSET  
NEW JERSEY, 08873  
TO SHOW CONDITIONS AS OF NOVEMBER 2017

This map has been drawn using Computer Aided Drafting/Design (CAD/D) and Coordinated Geometry (COGO).

# KEY MAP 22