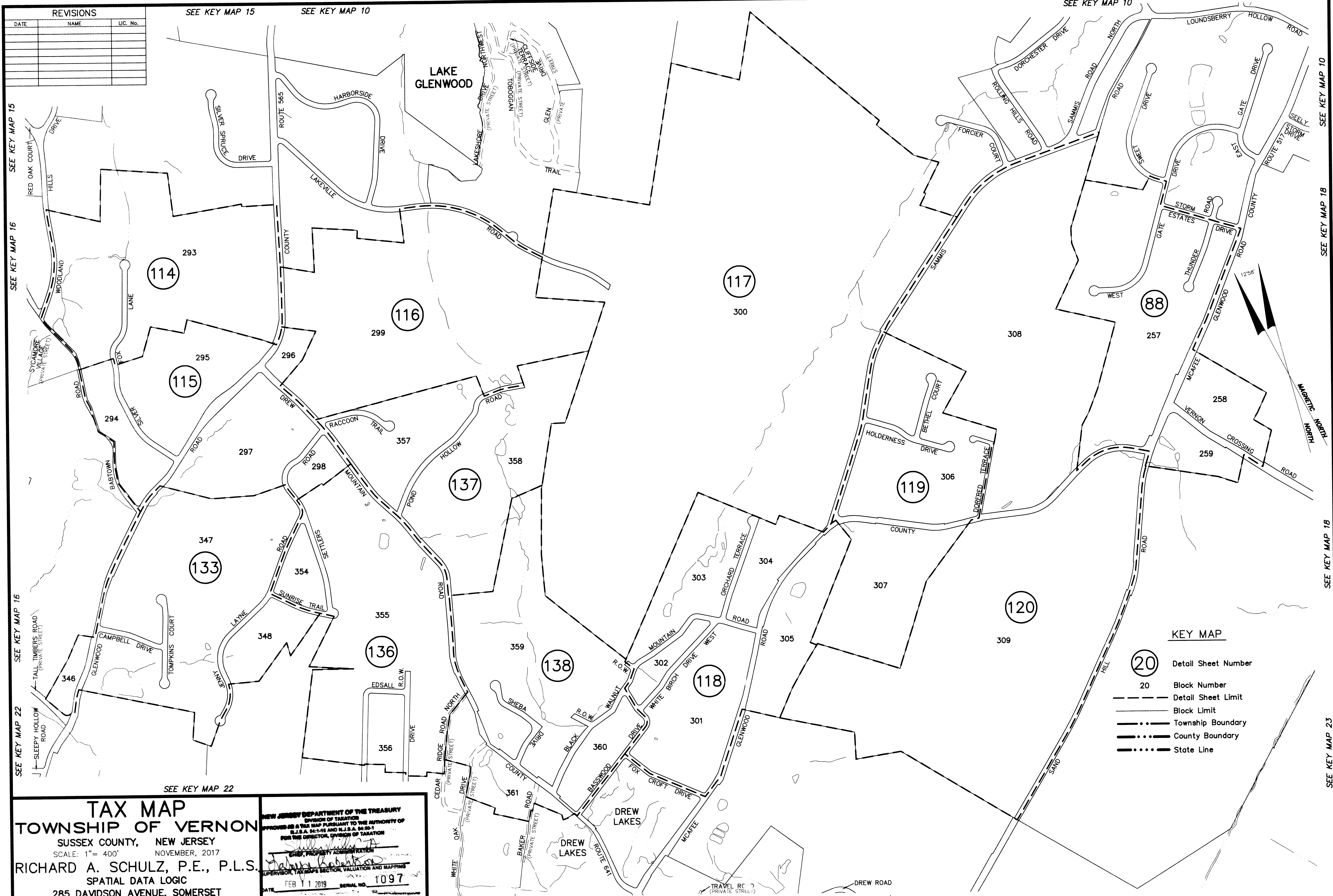


REVISIONS		
DATE	NAME	LIC. No.



SEE KEY MAP 15
SEE KEY MAP 16
SEE KEY MAP 16
SEE KEY MAP 22

SEE KEY MAP 10
SEE KEY MAP 18
SEE KEY MAP 18
SEE KEY MAP 23

TAX MAP
TOWNSHIP OF VERNON
 SUSSEX COUNTY, NEW JERSEY
 SCALE: 1" = 400' NOVEMBER, 2017
RICHARD A. SCHULZ, P.E., P.L.S.
 SPATIAL DATA LOGIC
 285 DAVIDSON AVENUE, SOMERSET
 NEW JERSEY, 08873
 TO SHOW CONDITIONS AS OF NOVEMBER 2017

NEW JERSEY DEPARTMENT OF THE TREASURY
 DIVISION OF TAXATION
 APPROVED AS A TAX MAP PURSUANT TO THE AUTHORITY OF
 N.J.S.A. 54:1-15 AND N.J.S.A. 54:2-1
 FOR THE DIRECTOR, DIVISION OF TAXATION
 CHIEF, PROPERTY ADMINISTRATION
 SUPERVISOR, TAX MAPS SECTION, VALUATION AND MAPPING
 DATE: FEB 11 2019 SERIAL NO. 1097

SEE KEY MAP 22

This map has been drawn using Computer Aided Drafting/Design (CAD/D) and Coordinated Geometry (COGO).

SEE KEY MAP 22

SEE KEY MAP 23

- KEY MAP**
- 20 Detail Sheet Number
 - 20 Block Number
 - Detail Sheet Limit
 - Block Limit
 - Township Boundary
 - County Boundary
 - State Line