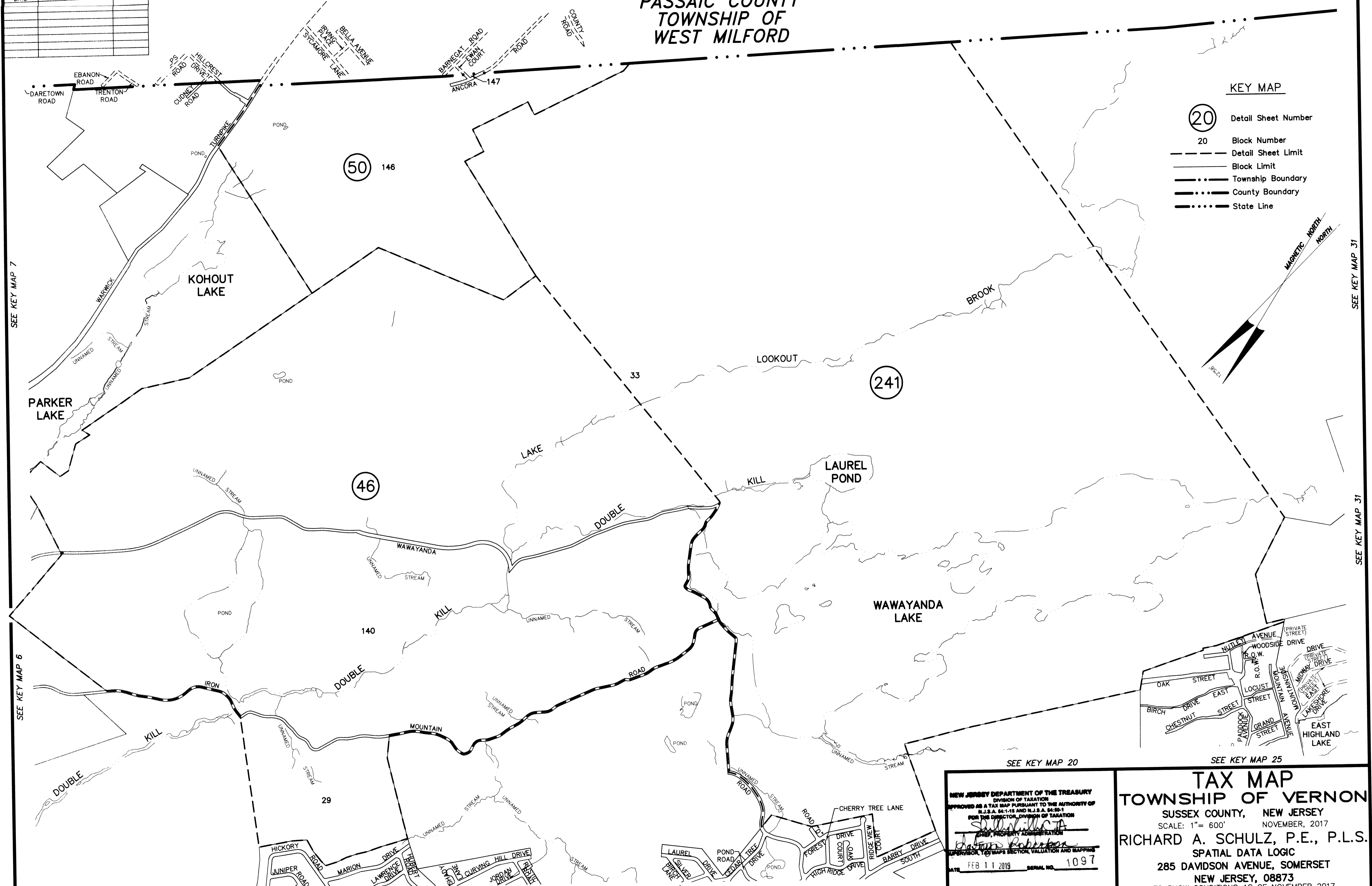


PASSAIC COUNTY TOWNSHIP OF WEST MILFORD

| REVISIONS | | |
|-----------|------|----------|
| DATE | NAME | LIC. No. |
| | | |
| | | |
| | | |
| | | |
| | | |
| | | |
| | | |
| | | |
| | | |
| | | |



SEE KEY MAP 7

SEE KEY MAP 6

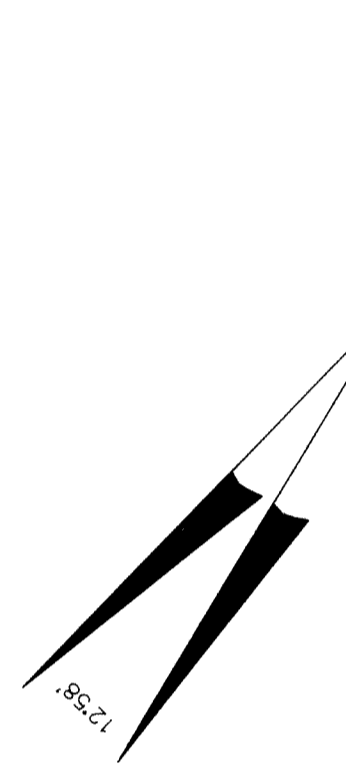
SEE KEY MAP 6

SEE KEY MAP 13

This map has been drawn using Computer Aided Drafting/Design (CAD/D) and Coordinated Geometry (COGO).

SEE KEY MAP 13

- KEY MAP**
- 20 Detail Sheet Number
 - 20 Block Number
 - Detail Sheet Limit
 - Block Limit
 - Township Boundary
 - County Boundary
 - State Line



SEE KEY MAP 31

SEE KEY MAP 31

NEW JERSEY DEPARTMENT OF THE TREASURY
DIVISION OF TAXATION
APPROVED AS A TAX MAP PURSUANT TO THE AUTHORITY OF
R.J.S.A. 94:1-18 AND R.J.S.A. 94:1-1
FOR THE DIRECTOR, DIVISION OF TAXATION
[Signature]
CHIEF, PROPERTY ADMINISTRATION
DATE FEB 11 2019 SERIAL NO. 1097

TAX MAP
TOWNSHIP OF VERNON
SUSSEX COUNTY, NEW JERSEY
SCALE: 1" = 600' NOVEMBER, 2017
RICHARD A. SCHULZ, P.E., P.L.S.
SPATIAL DATA LOGIC
285 DAVIDSON AVENUE, SOMERSET
NEW JERSEY, 08873
TO SHOW CONDITIONS AS OF NOVEMBER 2017