

# KEY MAP 13

REVISIONS		
DATE	NAME	LIC. No.

SEE KEY MAP 12

SEE KEY MAP 12

SEE KEY MAP 12

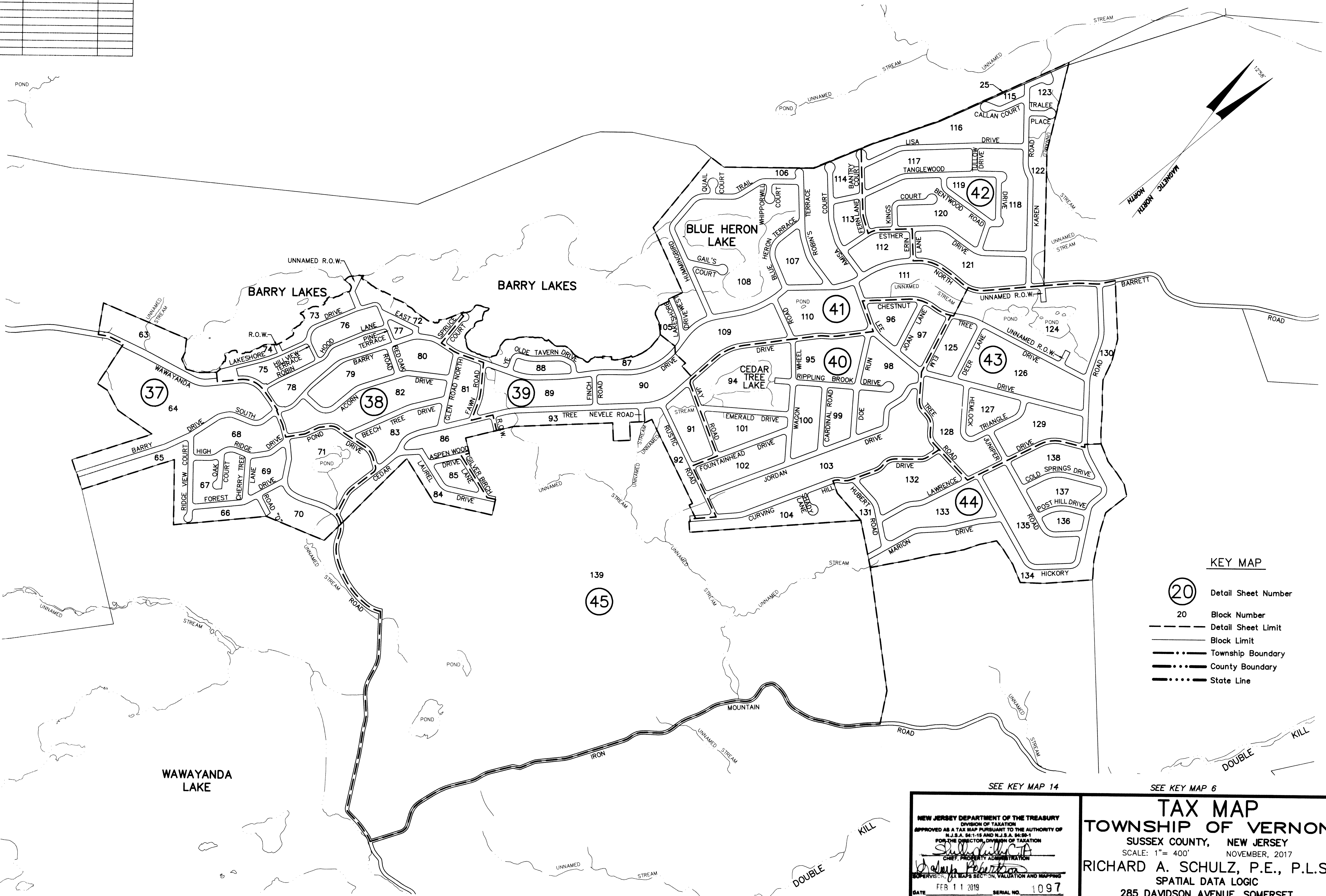
SEE KEY MAP 5

SEE KEY MAP 12

SEE KEY MAP 20

SEE KEY MAP 20

SEE KEY MAP 14



### KEY MAP

- 20 Detail Sheet Number
- 20 Block Number
- Detail Sheet Limit
- Block Limit
- Township Boundary
- County Boundary
- State Line

SEE KEY MAP 14

SEE KEY MAP 6

NEW JERSEY DEPARTMENT OF THE TREASURY  
 DIVISION OF TAXATION  
 APPROVED AS A TAX MAP PURSUANT TO THE AUTHORITY OF  
 N.J.S.A. 54:1-15 AND N.J.S.A. 54:15-1  
 FOR THE DIRECTOR, DIVISION OF TAXATION  
*Shirley A. Hill*  
 CHIEF, PROPERTY ADMINISTRATION  
*Joseph P. Robertson*  
 SUPERVISOR, TAX MAPS SECTION, VALUATION AND MAPPING  
 DATE FEB 11 2019 SERIAL NO. 1097

**TAX MAP**  
**TOWNSHIP OF VERNON**  
 SUSSEX COUNTY, NEW JERSEY  
 SCALE: 1" = 400' NOVEMBER, 2017  
**RICHARD A. SCHULZ, P.E., P.L.S.**  
 SPATIAL DATA LOGIC  
 285 DAVIDSON AVENUE, SOMERSET  
 NEW JERSEY, 08873  
 TO SHOW CONDITIONS AS OF NOVEMBER 2017

SEE KEY MAP 14

SEE KEY MAP 14

This map has been drawn using Computer Aided Drafting/Design (CAD/D) and Coordinated Geometry (COGO).

# KEY MAP 13