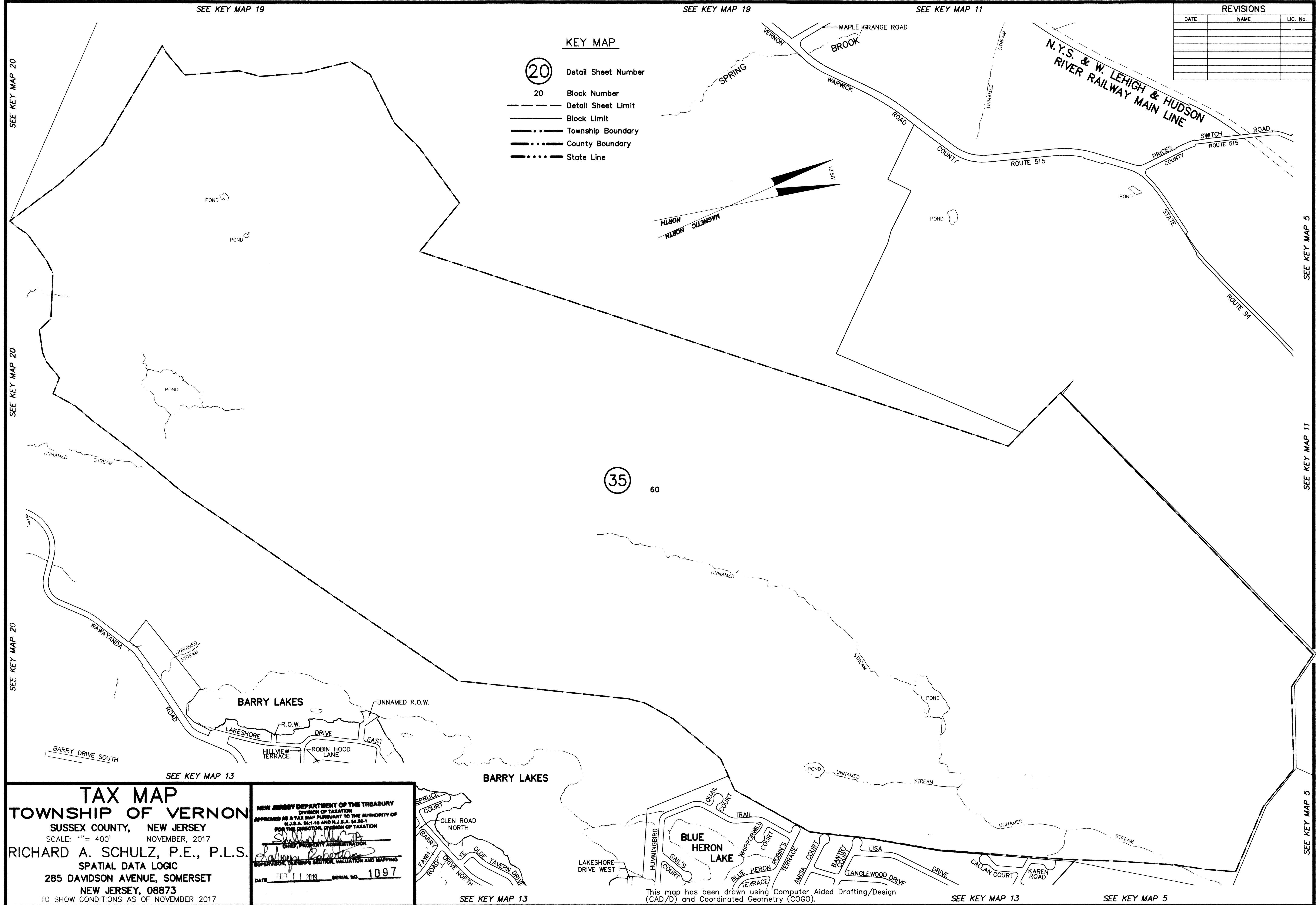
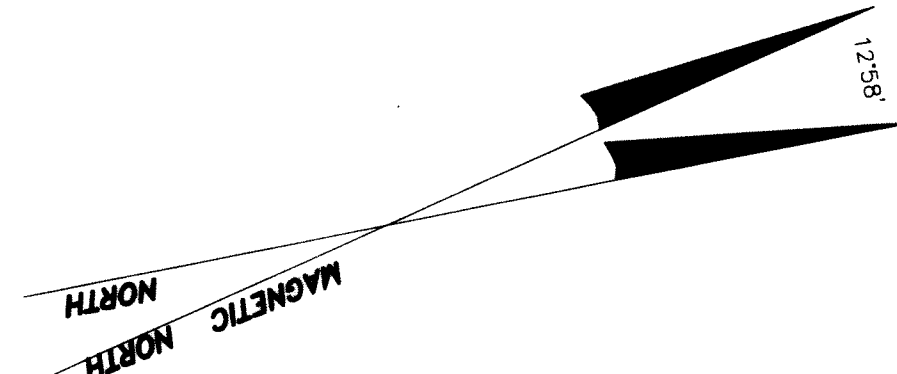


REVISIONS		
DATE	NAME	LIC. No.

KEY MAP

- 20 Detail Sheet Number
- 20 Block Number
- Detail Sheet Limit
- Block Limit
- Township Boundary
- County Boundary
- State Line



TAX MAP
TOWNSHIP OF VERNON
 SUSSEX COUNTY, NEW JERSEY
 SCALE: 1" = 400' NOVEMBER, 2017
RICHARD A. SCHULZ, P.E., P.L.S.
 SPATIAL DATA LOGIC
 285 DAVIDSON AVENUE, SOMERSET
 NEW JERSEY, 08873
 TO SHOW CONDITIONS AS OF NOVEMBER 2017

NEW JERSEY DEPARTMENT OF THE TREASURY
 DIVISION OF TAXATION
 APPROVED AS A TAX MAP PURSUANT TO THE AUTHORITY OF
 N.J.S.A. 54:1-15 AND N.J.S.A. 54:50-1
Richard A. Schulz
 CHIEF, PROPERTY ADMINISTRATION
 SUPERVISOR, TAXPAYER'S SECTION, VALUATION AND MAPPING
 DATE FEB 11 2019 SERIAL NO. 1097

SEE KEY MAP 13
 SPRUCE COURT
 GLEN ROAD NORTH
 OLDE TAVERN DRIVE
 HUNTINGBIRD
 QUAIL COURT TRAIL
 BLUE HERON LAKE
 WHIPPORWILL COURT
 BLUE HERON TERRACE
 AMISA COURT
 BANTY COURT
 LISA
 TANGLEWOOD DRIVE
 DRIVE
 CALLAN COURT
 KAREN ROAD

This map has been drawn using Computer Aided Drafting/Design (CAD/D) and Coordinated Geometry (COGO).

SEE KEY MAP 13 SEE KEY MAP 5