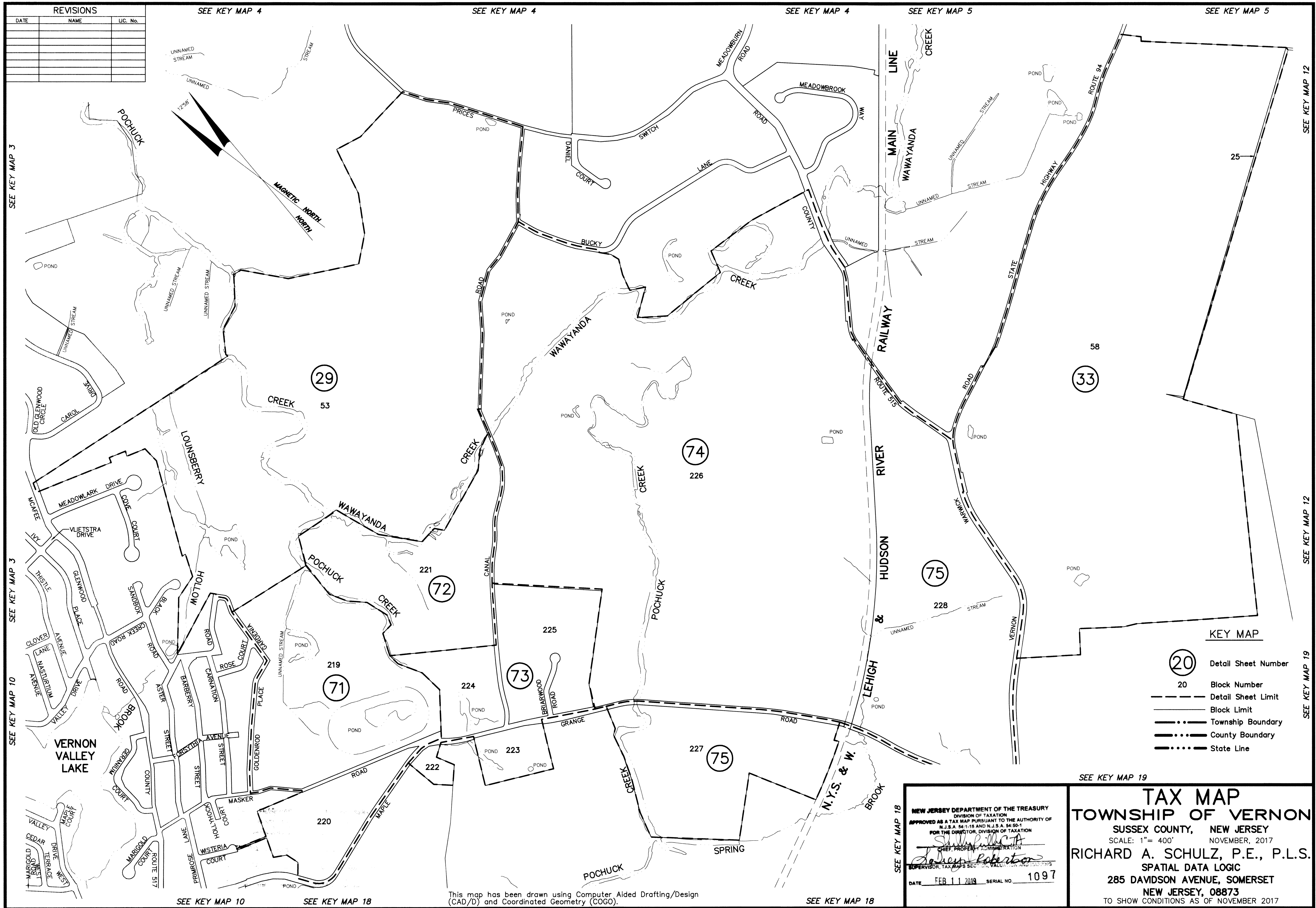


REVISIONS		
DATE	NAME	LIC. No.



SEE KEY MAP 3

SEE KEY MAP 3

SEE KEY MAP 10

SEE KEY MAP 4

SEE KEY MAP 4

SEE KEY MAP 4

SEE KEY MAP 5

SEE KEY MAP 5

SEE KEY MAP 12

SEE KEY MAP 12

SEE KEY MAP 19

SEE KEY MAP 19

SEE KEY MAP 18

SEE KEY MAP 10

SEE KEY MAP 18

This map has been drawn using Computer Aided Drafting/Design (CAD/D) and Coordinated Geometry (COGO).

- KEY MAP**
- (20) Detail Sheet Number
 - 20 Block Number
 - Detail Sheet Limit
 - Block Limit
 - Township Boundary
 - County Boundary
 - State Line

NEW JERSEY DEPARTMENT OF THE TREASURY
 DIVISION OF TAXATION
 APPROVED AS A TAX MAP PURSUANT TO THE AUTHORITY OF
 N.J.S.A. 54:1-15 AND N.J.S.A. 54:50-1
 FOR THE DIRECTOR, DIVISION OF TAXATION
Richard A. Schulz
 CHIEF, PROPERTY ADMINISTRATION
Robert...
 SUPERVISOR, TAX MAPS SECTION, VALUATION AND APPRAISALS
 DATE FEB 11 2019 SERIAL NO. 1097

TAX MAP
TOWNSHIP OF VERNON
 SUSSEX COUNTY, NEW JERSEY
 SCALE: 1" = 400' NOVEMBER, 2017
RICHARD A. SCHULZ, P.E., P.L.S.
 SPATIAL DATA LOGIC
 285 DAVIDSON AVENUE, SOMERSET
 NEW JERSEY, 08873
 TO SHOW CONDITIONS AS OF NOVEMBER 2017