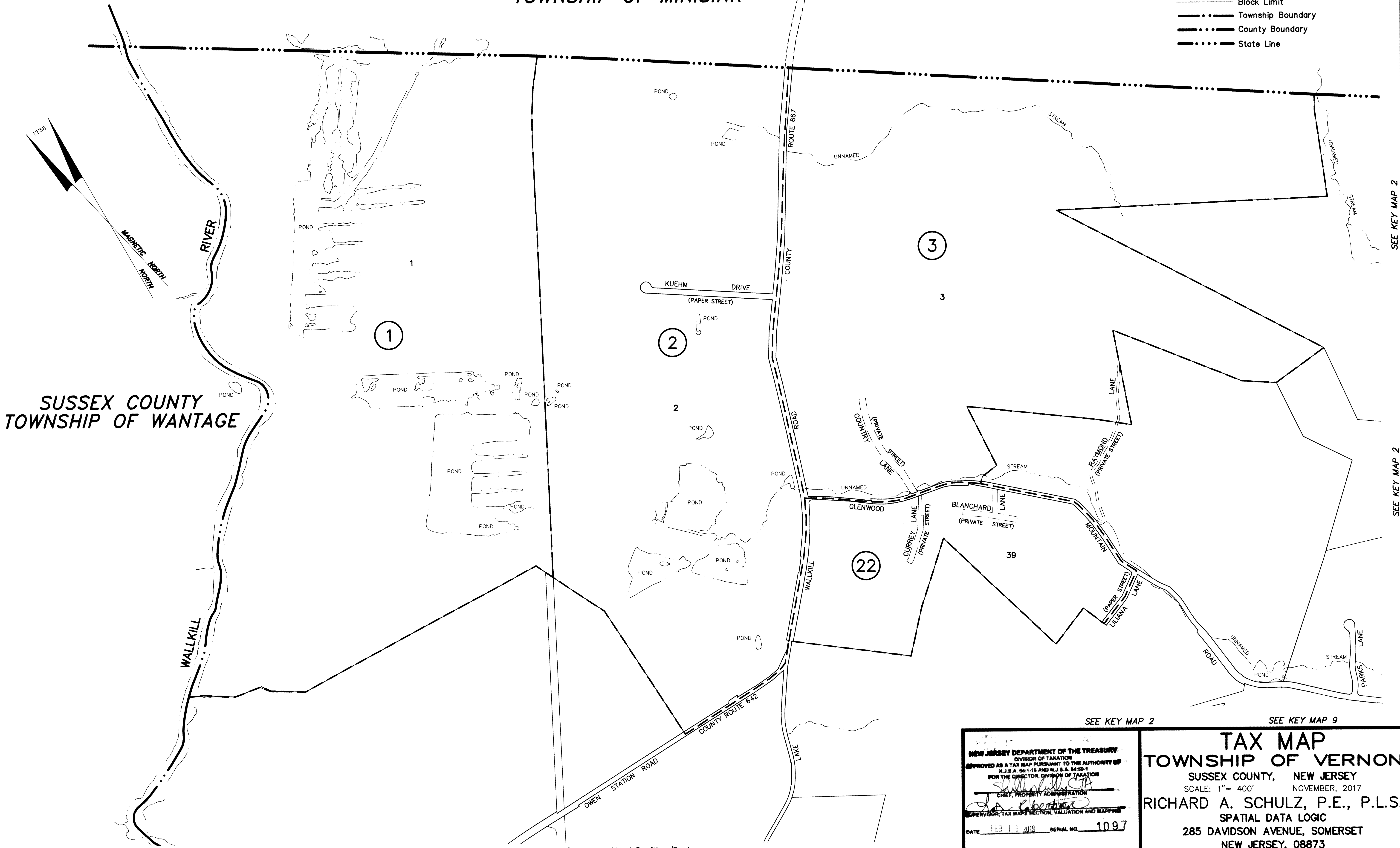


REVISIONS		
DATE	NAME	LOC. No.

STATE OF NEW YORK
ORANGE COUNTY
TOWNSHIP OF MINISINK

KEY MAP

- 20 Detail Sheet Number
- 20 Block Number
- Detail Sheet Limit
- Block Limit
- Township Boundary
- County Boundary
- State Line



SUSSEX COUNTY
TOWNSHIP OF WANTAGE

SEE KEY MAP 8

This map has been drawn using Computer Aided Drafting/Design (CAD/D) and Coordinated Geometry (COGO).

SEE KEY MAP 8

SEE KEY MAP 2

NEW JERSEY DEPARTMENT OF THE TREASURY
DIVISION OF TAXATION
APPROVED AS A TAX MAP PURSUANT TO THE AUTHORITY OF
N.J.S.A. 84:1-15 AND N.J.S.A. 84:16-4
FOR THE DIRECTOR, DIVISION OF TAXATION
[Signature]
CHIEF, PROPERTY ADMINISTRATION
[Signature]
SUPERVISOR, TAX MAPS SECTION, VALUATION AND MAPPING
DATE FEB 11 2018 SERIAL NO. 1097

TAX MAP
TOWNSHIP OF VERNON
SUSSEX COUNTY, NEW JERSEY
SCALE: 1" = 400' NOVEMBER, 2017
RICHARD A. SCHULZ, P.E., P.L.S.
SPATIAL DATA LOGIC
285 DAVIDSON AVENUE, SOMERSET
NEW JERSEY, 08873
TO SHOW CONDITIONS AS OF NOVEMBER 2017