

WFLC2
LED City Washington Series Luminaire
Full Cutoff (LD)

Mechanical:
- 100% polycarbonate body (100% UV resistant)
- Includes lens and gasket
- Includes base and mounting hardware
- Includes mounting arm and hardware
- Includes mounting plate and hardware
- Includes mounting bracket and hardware
- Includes mounting post and hardware
- Includes mounting nut and hardware
- Includes mounting washer and hardware
- Includes mounting gasket and hardware
- Includes mounting seal and hardware
- Includes mounting O-ring and hardware
- Includes mounting spring and hardware
- Includes mounting clip and hardware
- Includes mounting pin and hardware
- Includes mounting screw and hardware
- Includes mounting bolt and hardware
- Includes mounting nut and hardware
- Includes mounting washer and hardware
- Includes mounting gasket and hardware
- Includes mounting seal and hardware
- Includes mounting O-ring and hardware
- Includes mounting spring and hardware
- Includes mounting clip and hardware
- Includes mounting pin and hardware
- Includes mounting screw and hardware
- Includes mounting bolt and hardware

Electrical:
- 100% polycarbonate body (100% UV resistant)
- Includes lens and gasket
- Includes base and mounting hardware
- Includes mounting arm and hardware
- Includes mounting plate and hardware
- Includes mounting bracket and hardware
- Includes mounting post and hardware
- Includes mounting nut and hardware
- Includes mounting washer and hardware
- Includes mounting gasket and hardware
- Includes mounting seal and hardware
- Includes mounting O-ring and hardware
- Includes mounting spring and hardware
- Includes mounting clip and hardware
- Includes mounting pin and hardware
- Includes mounting screw and hardware
- Includes mounting bolt and hardware

Dimensions:
- 100% polycarbonate body (100% UV resistant)
- Includes lens and gasket
- Includes base and mounting hardware
- Includes mounting arm and hardware
- Includes mounting plate and hardware
- Includes mounting bracket and hardware
- Includes mounting post and hardware
- Includes mounting nut and hardware
- Includes mounting washer and hardware
- Includes mounting gasket and hardware
- Includes mounting seal and hardware
- Includes mounting O-ring and hardware
- Includes mounting spring and hardware
- Includes mounting clip and hardware
- Includes mounting pin and hardware
- Includes mounting screw and hardware
- Includes mounting bolt and hardware

PLYMOUTH Series
Cast Aluminum Bollard

Specifications
DESCRIPTION: The bollard shall be cast aluminum construction with a cast aluminum base and a square anchor bolt cover. The bollard shall be provided with a cast aluminum ball or dome top.

MATERIALS: The bollard and top shall be heavy cast aluminum produced from certified A356 T6. Topper use ASTM B1790 or ASTM B865. The castings shall be formed true to the pattern with complete detail. All exposed hardware shall be 304 stainless steel. Anchor bolts to be completely hot dip galvanized.

CONSTRUCTION: The bollard shall be made from a one-piece casting with the cast ball or dome top welded to the top. All exposed welds must be ground smooth. All welding shall be per AWS D10.1:2008. All welds shall be certified per Section 5 of ANSI/AWS D11.4:2002.

FINISHES: The bollard shall be 2" or 2 1/2" or 3" in height with a 12" square base, and a 6" diameter ball or 6" diameter dome top.

INSTALLATION: The bollard shall be provided with four 3/4" diameter, hot dip galvanized pipe anchor bolts to be installed on a 6" x 7" foot base. A cast bolt cover shall be provided to conceal anchor bolts. An access door shall be provided in the base.

Color: For finish specifications and color options, see "Finish" section in drawings.

ORDERING GUIDE
BOLLARD TYPE: BOLL-181 (18" DIA) BK-2
Base: (Select appropriate base)
Top: BOLL-181 (18" DIA) BK-2 (Select appropriate top)
Finish: (Select appropriate finish)
Material: (Select appropriate material)
Color: (Select appropriate color)
Quantity: (Select appropriate quantity)

Note
1. Readings shown are based on a total LLF as shown at grade. Data references the extrapolated performance projections in a 25c ambient based on 10,000 hrs of LED testing (per IESNA LM-80-08 and projected per IESNA TM-21-11)
2. Please refer to the "luminaire locations" table for mounting heights.
3. Product information can be obtained at www.Holophane.com or through your local agency.
4. This lighting design does not meet minimal IESNA minimal requirements for parking and pedestrian traffic. Acuity Brands will not be liable for any issues that may arise from the installation of this design.

Luminaire Locations

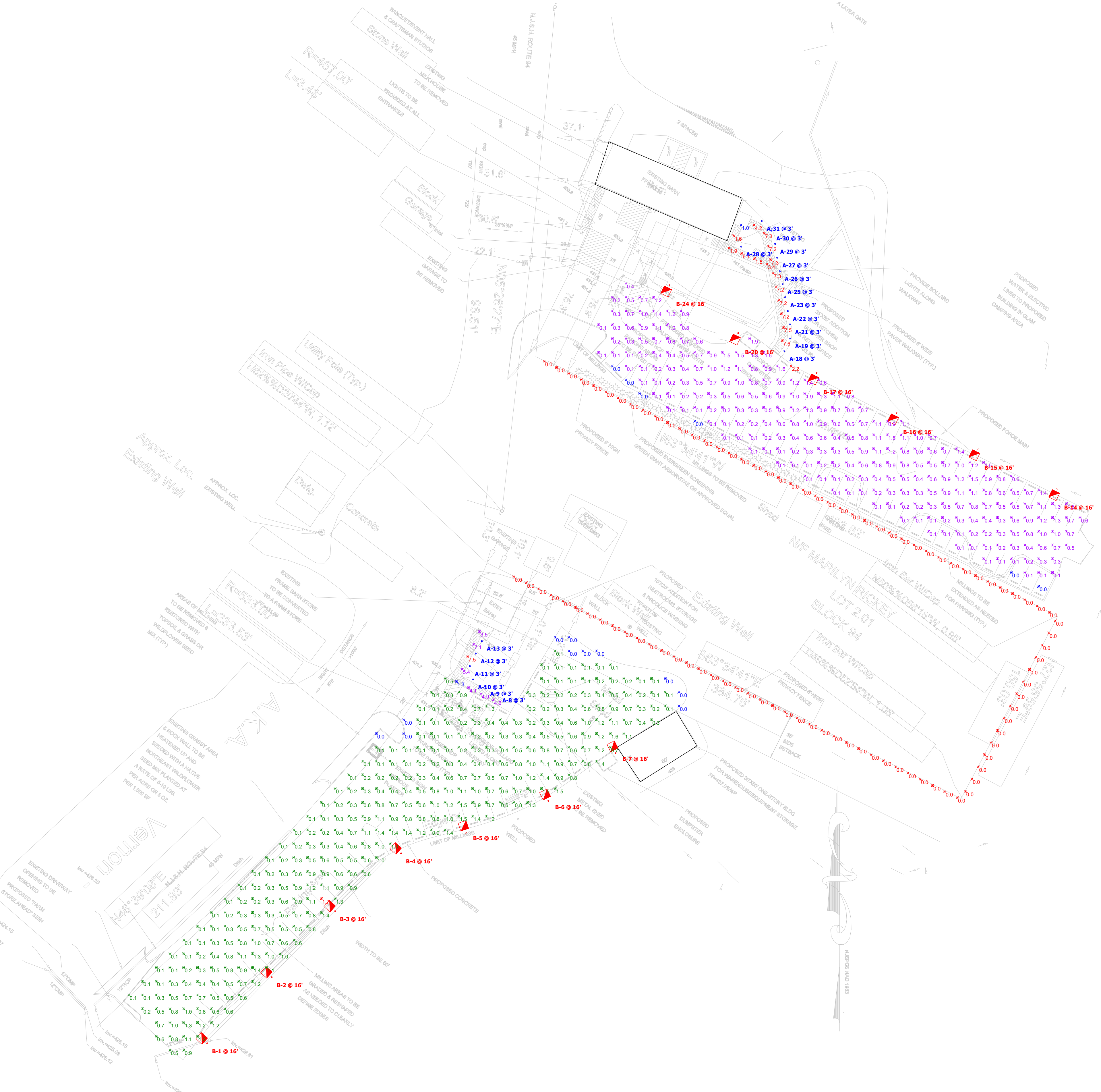
No.	Label	X	Y	Z	MH	Orientation	Tilt	X	Y	Z
1	B	355.00	-168.00	16.00	16.00	311.82	0.00	353.70	-166.83	0.00
2	B	402.00	-120.00	16.00	16.00	311.82	0.00	400.70	-118.83	0.00
3	B	448.00	-72.00	16.00	16.00	311.82	0.00	446.70	-70.83	0.00
4	B	496.00	-30.00	16.00	16.00	311.82	0.00	494.70	-28.83	0.00
5	B	543.00	-15.00	16.00	16.00	340.82	0.00	542.43	-13.35	0.00
6	B	603.00	8.00	16.00	16.00	333.43	0.00	602.22	9.57	0.00
7	B	652.00	43.00	16.00	16.00	333.43	0.00	651.22	44.57	0.00
8	A	565.96	86.73	3.00	3.00	335.47	0.00	565.96	86.73	0.00
9	A	557.06	91.53	3.00	3.00	335.47	0.00	557.06	91.53	0.00
10	A	548.25	96.33	3.00	3.00	335.47	0.00	548.25	96.33	0.00
11	A	545.96	106.03	3.00	3.00	335.47	0.00	545.96	106.03	0.00
12	A	550.26	115.13	3.00	3.00	335.47	0.00	550.26	115.13	0.00
13	A	554.66	124.23	3.00	3.00	335.47	0.00	554.66	124.23	0.00
14	B	973.00	235.00	16.00	16.00	205.82	0.00	972.24	233.42	0.00
15	B	915.00	264.00	16.00	16.00	205.82	0.00	914.24	262.42	0.00
16	B	856.00	290.00	16.00	16.00	205.82	0.00	855.24	288.42	0.00
17	B	798.00	319.00	16.00	16.00	205.82	0.00	797.24	317.42	0.00
18	A	774.60	335.00	3.00	3.00	0.00	0.00	774.60	335.00	0.00
19	A	778.70	344.00	3.00	3.00	0.00	0.00	778.70	344.00	0.00
20	B	741.00	348.00	16.00	16.00	205.82	0.00	740.24	346.42	0.00
21	A	778.70	354.30	3.00	3.00	0.00	0.00	778.70	354.30	0.00
22	A	777.10	364.00	3.00	3.00	0.00	0.00	777.10	364.00	0.00
23	A	775.20	374.00	3.00	3.00	0.00	0.00	775.20	374.00	0.00
24	B	691.00	383.00	16.00	16.00	205.82	0.00	690.24	381.42	0.00
25	A	773.30	383.60	3.00	3.00	0.00	0.00	773.30	383.60	0.00
26	A	771.20	392.90	3.00	3.00	0.00	0.00	771.20	392.90	0.00
27	A	769.40	402.70	3.00	3.00	0.00	0.00	769.40	402.70	0.00
28	A	743.20	410.80	3.00	3.00	0.00	0.00	743.20	410.80	0.00
29	A	767.90	412.80	3.00	3.00	0.00	0.00	767.90	412.80	0.00
30	A	765.10	422.40	3.00	3.00	0.00	0.00	765.10	422.40	0.00
31	A	758.10	429.40	3.00	3.00	0.00	0.00	758.10	429.40	0.00

Statistics

Description	Symbol	Max	Min	Max/Min	Avg/Min	Avg
LOWER PARKING LOT	✳	1.7 fc	0.0 fc	N/A	N/A	0.5 fc
LOWER SIDE WALK	✳	7.5 fc	1.3 fc	5.8:1	3.7:1	4.8 fc
PROPERTY LINE	✳	0.0 fc	0.0 fc	N/A	N/A	0.0 fc
UPPER PARKING LOT	✳	2.2 fc	0.0 fc	N/A	N/A	0.6 fc
UPPER SIDE WALK	✳	7.6 fc	1.0 fc	7.6:1	5.3:1	5.3 fc

Schedule

Symbol	Label	Image	QTY	Manufacturer	Catalog Number	Description	Number Lamps	Filename	Lumens per Lamp	LLF	Wattage	Efficiency	Distribution	Polar Plot
✳	A		18	Holophane	PLBOLED P40 40K xxxxx GL5 ACS	Plymouth LED Bollard, P40 Performance Package, 4000K, Internal glass refractor, Type 5, Acrylic Clear Smooth outer lens	1	PLBOLED_P40_40K_xxxxx_GL5_ACS.ies	3074	0.9	32	100%	TYPE V, BUG RATING: B1 - U4 - G2	
✳	B		13	Holophane	WFLC2 P20 40K XX L4	Washington FCO LED 2, P20, 4000K, Type 4 Optic	1	WFLC2_P20_40K_X_X_L4.ies	4468	0.9	45	100%	TYPE IV, VERY SHORT, BUG RATING: B2 - U0 - G2	



Plan View
Scale: 1" = 40'

DISCLAIMER
This architectural lighting submittal is provided only for informational purposes and to help the customer or end-user (as applicable) understand how various sections of linear fixtures connect to each other and how they mount to the ceiling. This lighting submittal is strictly based on the information provided to Acuity Brands, and is provided without warranty as to accuracy, completeness, reliability or otherwise. If the information (including but not limited to floor-plans, reflected ceiling plans, electrical plans and specifications) provided to Acuity Brands is incomplete or not current (i.e., newer versions exist), the accuracy of proposed design may be adversely affected. Once this lighting submittal is received by the customer or end-user (as applicable), it is the obligation of the customer or end-user (as applicable) to consult with a professional engineering advisor to determine whether the proposed design meets the applicable project requirements for lighting system performance, code compliance, safety, suitability and effectiveness for use in a particular application. In no event will Acuity Brands be responsible for any loss resulting from any use of any information contained in this lighting submittal.

Designer
R.A. MCILRATH
Date
1/5/2021
Scale
As Shown
Drawing No.
155366-1A1
Summary