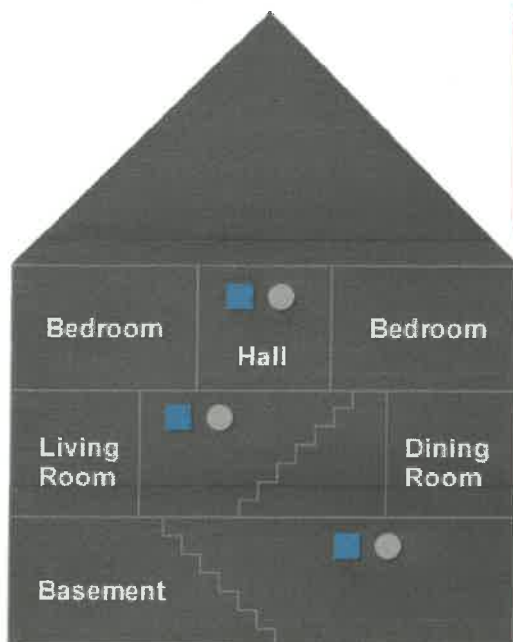


PLACEMENT

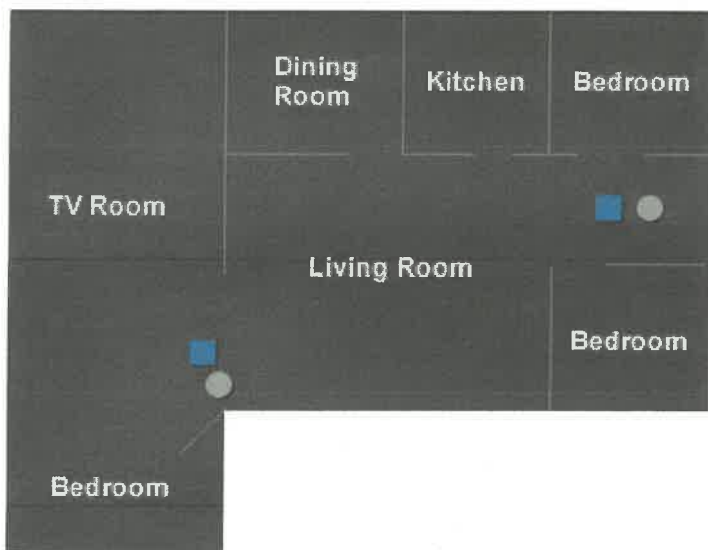
Smoke Detectors & Carbon Monoxide Alarms

- 10 Year Seal CO (Carbon Monoxide) Detector(s) & Smoke Detector(s);
- On every level & sub-level within 10' of Bedroom(s) in Hallway
- Including any rooms which may be considered bedrooms

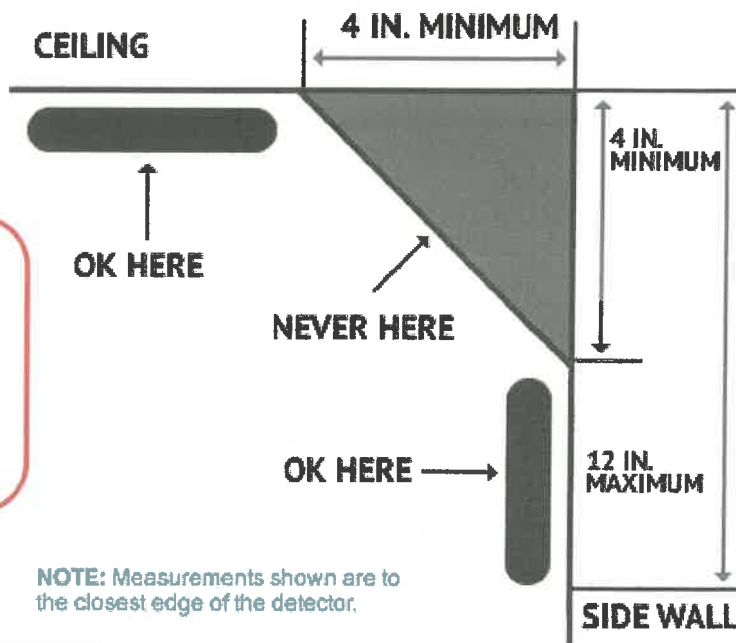
■ SMOKE DETECTOR
● CARBON MONOXIDE ALARM



HARDWIRED SYSTEMS MUST REMAIN HARDWIRED & OPERABLE. IT CANNOT BE REPLACED WITH 10 YEAR SEAL BATTERIES



- One Fire Extinguisher per Kitchen(s) may be placed on the kitchen counter. It should not be concealed.
- 10 Lb. or less;
- Must have ABC Coding on the label and;
- Must have a FULL charge! Gauge in the green.



NOTE: Measurements shown are to the closest edge of the detector.